

Survival Analysis -- One group

The PHREG Procedure

Model Information		
Data Set	WORK.PQSAS	
Dependent Variable	life2	life2
Censoring Variable	CENSOR	CENSOR
Censoring Value(s)	0	
Ties Handling	BRESLOW	

Number of Observations Read	1640
Number of Observations Used	1639

Class Level Information				
Class	Value	Design Variable 1	Design Variable 2	Design Variable 3
type	COMM	1	0	0
	MDCD	0	1	0
	MDCR	0	0	1
	OTHER	0	0	0

Summary of the Number of Event and Censored Values			
Total	Event	Censored	Percent Censored
1639	1061	578	35.27

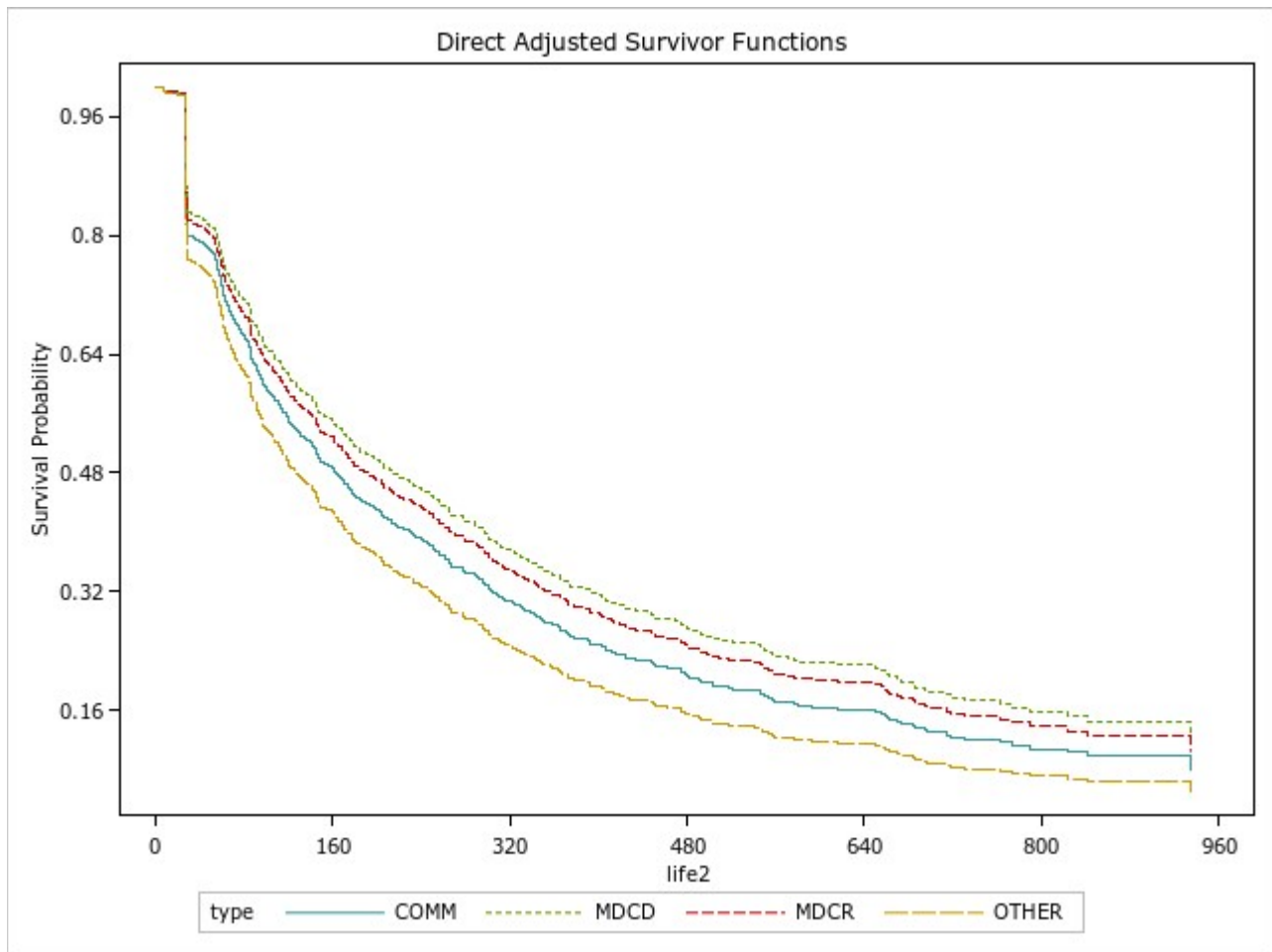
Convergence Status
Convergence criterion (GCONV=1E-8) satisfied.

Model Fit Statistics		
Criterion	Without Covariates	With Covariates
-2 LOG L	14111.102	14102.776
AIC	14111.102	14108.776
SBC	14111.102	14123.677

Testing Global Null Hypothesis: BETA=0			
Test	Chi-Square	DF	Pr > ChiSq
Likelihood Ratio	8.3266	3	0.0397
Score	8.4658	3	0.0373
Wald	8.4417	3	0.0377

Type 3 Tests			
Effect	DF	Wald Chi-Square	Pr > ChiSq
type	3	8.4417	0.0377

Analysis of Maximum Likelihood Estimates								
Parameter		DF	Parameter Estimate	Standard Error	Chi-Square	Pr > ChiSq	Hazard Ratio	Label
type	COMM	1	0.07134	0.08384	0.7240	0.3948	1.074	type COMM
type	MDCD	1	0.35713	0.17826	4.0137	0.0451	1.429	type MDCD
type	MDCR	1	0.18814	0.07883	5.6962	0.0170	1.207	type MDCR



Survival Analysis -- One group

Stratum 1: type = COMM

Summary Statistics for Time Variable life2

Quartiles				
Percent Label	Point Estimate	Transform	Lower 95% Confidence Limit	Upper 95% Confidence Limit
75	451.0000	LOGLOG	368.0000	580.0000
50	177.0000	LOGLOG	145.0000	213.0000
25	62.0000	LOGLOG	57.0000	69.0000

Mean	
Mean	Standard Error
308.4002	17.1612

NOTE: The mean and standard error are underestimated because the final observation was censored, and so the estimation was restricted to the largest uncensored observation.

Stratum 2: type = MDCCD

Summary Statistics for Time Variable life2

Quartiles				
Percent Label	Point Estimate	Transform	Lower 95% Confidence Limit	Upper 95% Confidence Limit
75	251.0000	LOGLOG	168.0000	491.0000
50	136.0000	LOGLOG	64.0000	179.0000
25	55.0000	LOGLOG	28.0000	64.0000

Mean	
Mean	Standard Error
180.3282	25.3385

NOTE: The mean and standard error are underestimated because the final observation was censored, and so the estimation was restricted to the largest uncensored observation.

Stratum 3: type = MDCR

Summary Statistics for Time Variable life2

Quartiles				
Percent Label	Point Estimate	Transform	Lower 95% Confidence Limit	Upper 95% Confidence Limit
75	393.0000	LOGLOG	357.0000	469.0000
50	144.0000	LOGLOG	120.0000	170.0000
25	52.0000	LOGLOG	30.0000	59.0000

Mean	
Mean	Standard Error
265.0301	12.4480

NOTE: The mean and standard error are underestimated because the final observation was censored, and so the estimation was restricted to the largest uncensored observation.

Stratum 4: type = OTHER
Summary Statistics for Time Variable life2

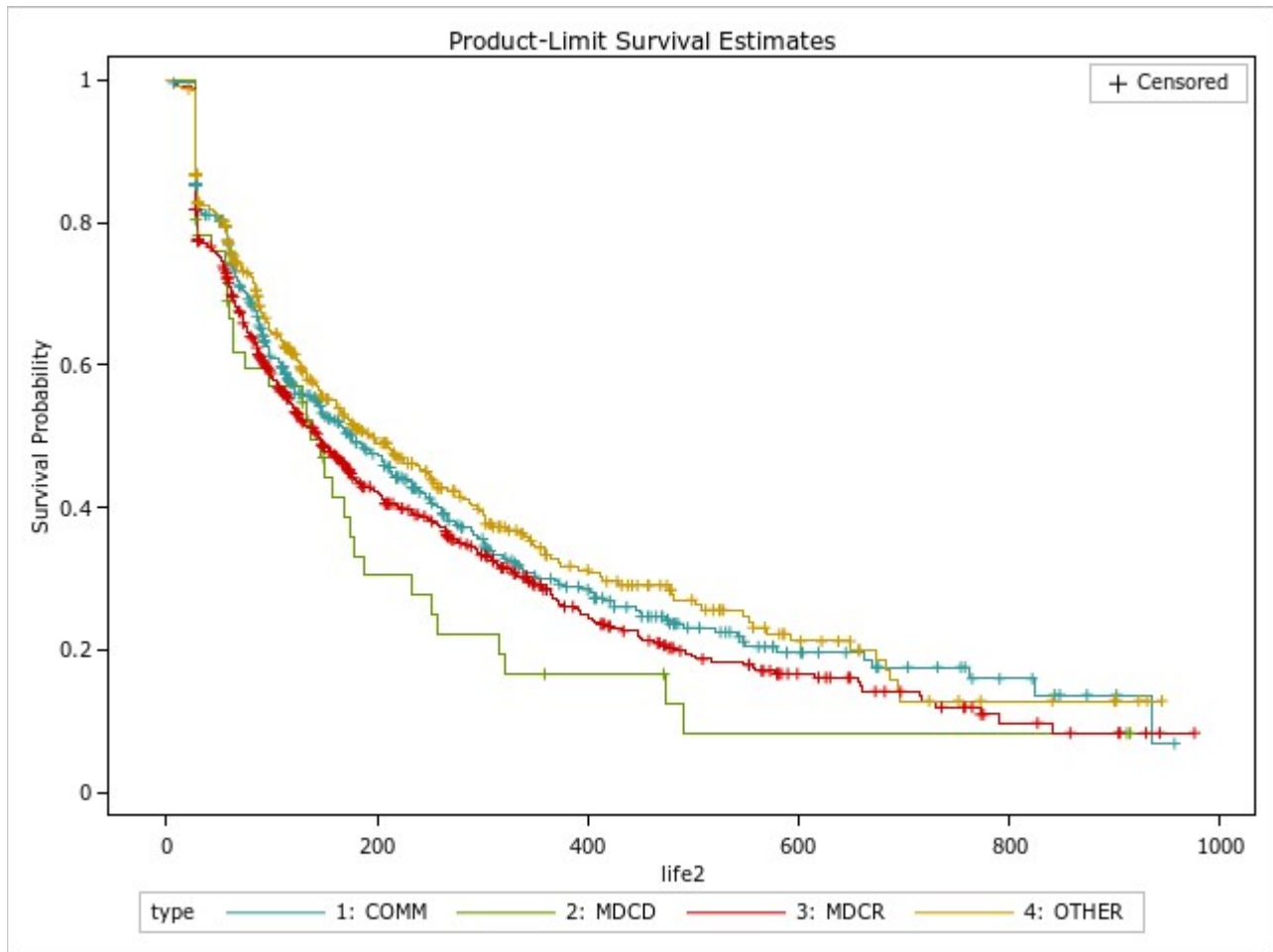
Quartiles				
Percent Label	Point Estimate	Transform	Lower 95% Confidence Limit	Upper 95% Confidence Limit
75	548.0000	LOGLOG	412.0000	684.0000
50	197.0000	LOGLOG	149.0000	248.0000
25	65.0000	LOGLOG	57.0000	85.0000

Mean	
Mean	Standard Error
290.0422	14.3278

NOTE: The mean and standard error are underestimated because the final observation was censored, and so the estimation was restricted to the largest uncensored observation.

Summary of the Number of Censored and Uncensored Values					
Stratum	type	Total	Failed	Censored	Percent Censored
1	COMM	520	327	193	37.12
2	MDCD	46	36	10	21.74
3	MDCR	656	446	210	32.01
4	OTHER	417	252	165	39.57
<i>Total</i>		<i>1639</i>	<i>1061</i>	<i>578</i>	<i>35.27</i>

NOTE: There was 1 observation with missing values, negative time values, or frequency values less than 1.



Testing Homogeneity of Survival Curves for life2 over Strata

Rank Statistics		
type	Log-Rank	Wilcoxon
COMM	-12.6296	-14617.0
MDCD	7.8814	6911.000
MDCR	33.8141	39480.00
OTHER	-29.0658	-31774.0

Covariance Matrix for the Log-Rank Statistics				
type	COMM	MDCD	MDCR	OTHER
COMM	221.8374	-8.6237	-126.622	-86.5921
MDCD	-8.6237	26.2112	-10.4617	-7.1259
MDCR	-126.622	-10.4617	241.9891	-104.906
OTHER	-86.5921	-7.1259	-104.906	198.6238

Covariance Matrix for the Wilcoxon Statistics				
type	COMM	MDCD	MDCR	OTHER
COMM	2.4617E8	-9957468	-1.421E8	-9.408E7
MDCD	-9957468	30254983	-1.222E7	-8074518
MDCR	-1.421E8	-1.222E7	2.6962E8	-1.153E8
OTHER	-9.408E7	-8074518	-1.153E8	2.1743E8

Test of Equality over Strata			
Test	Chi-Square	DF	Pr > Chi-Square
Log-Rank	8.8144	3	0.0319
Wilcoxon	9.0758	3	0.0283
-2Log(LR)	9.1254	3	0.0277