

The LOGISTIC Procedure

Model Information	
Data Set	WORK.COVID
Response Variable	distant2
Number of Response Levels	2
Model	binary logit
Optimization Technique	Fisher's scoring

Number of Observations Read	450
Number of Observations Used	448

Response Profile		
Ordered Value	distant2	Total Frequency
1	0	310
2	1	138

Probability modeled is distant2=1.

**Note:** 2 observations were deleted due to missing values for the response or explanatory variables.

Model Convergence Status
Convergence criterion (GCONV=1E-8) satisfied.

Model Fit Statistics		
Criterion	Intercept Only	Intercept and Covariates
AIC	555.298	403.482
SC	559.403	424.006
-2 Log L	553.298	393.482

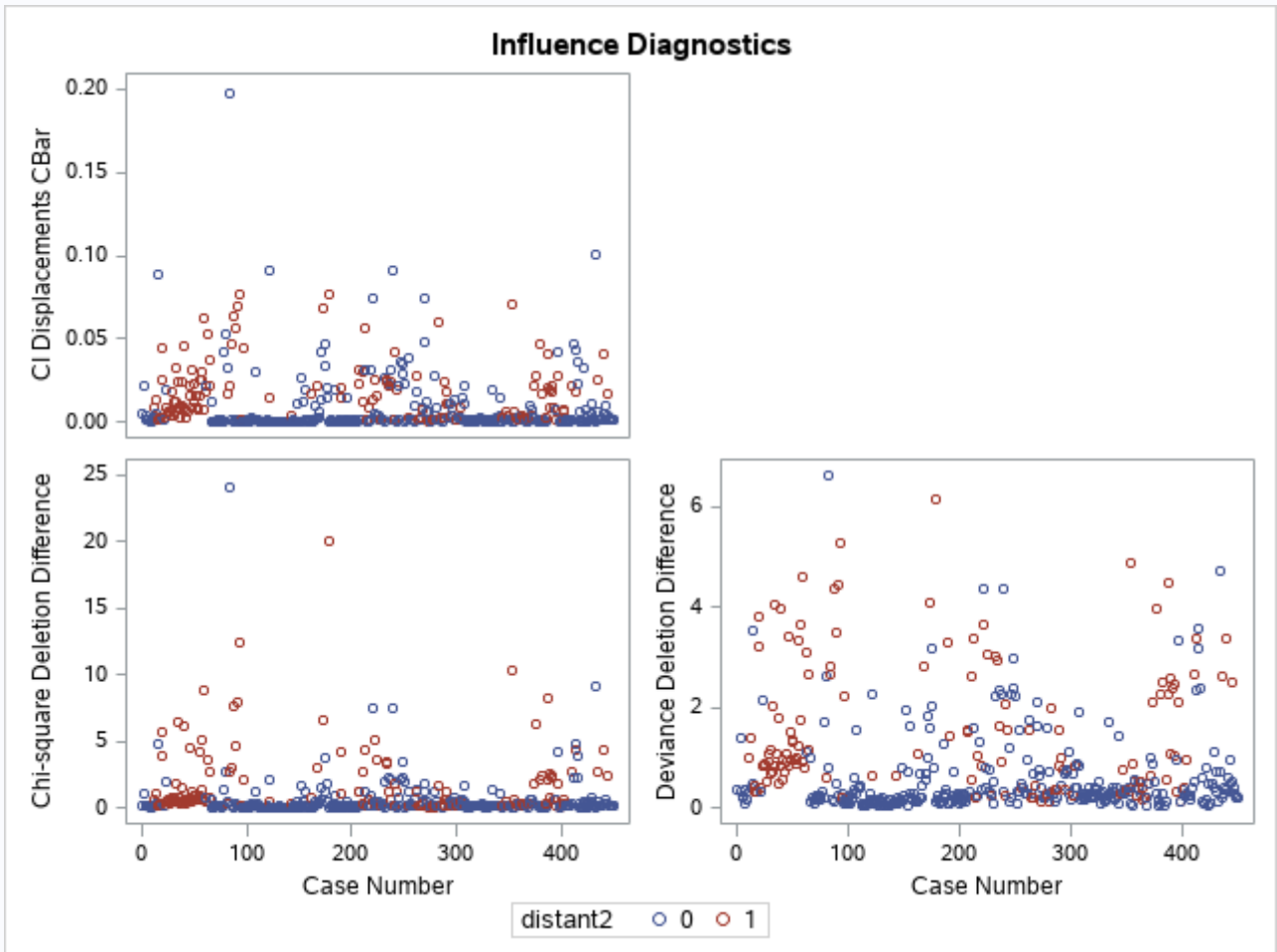
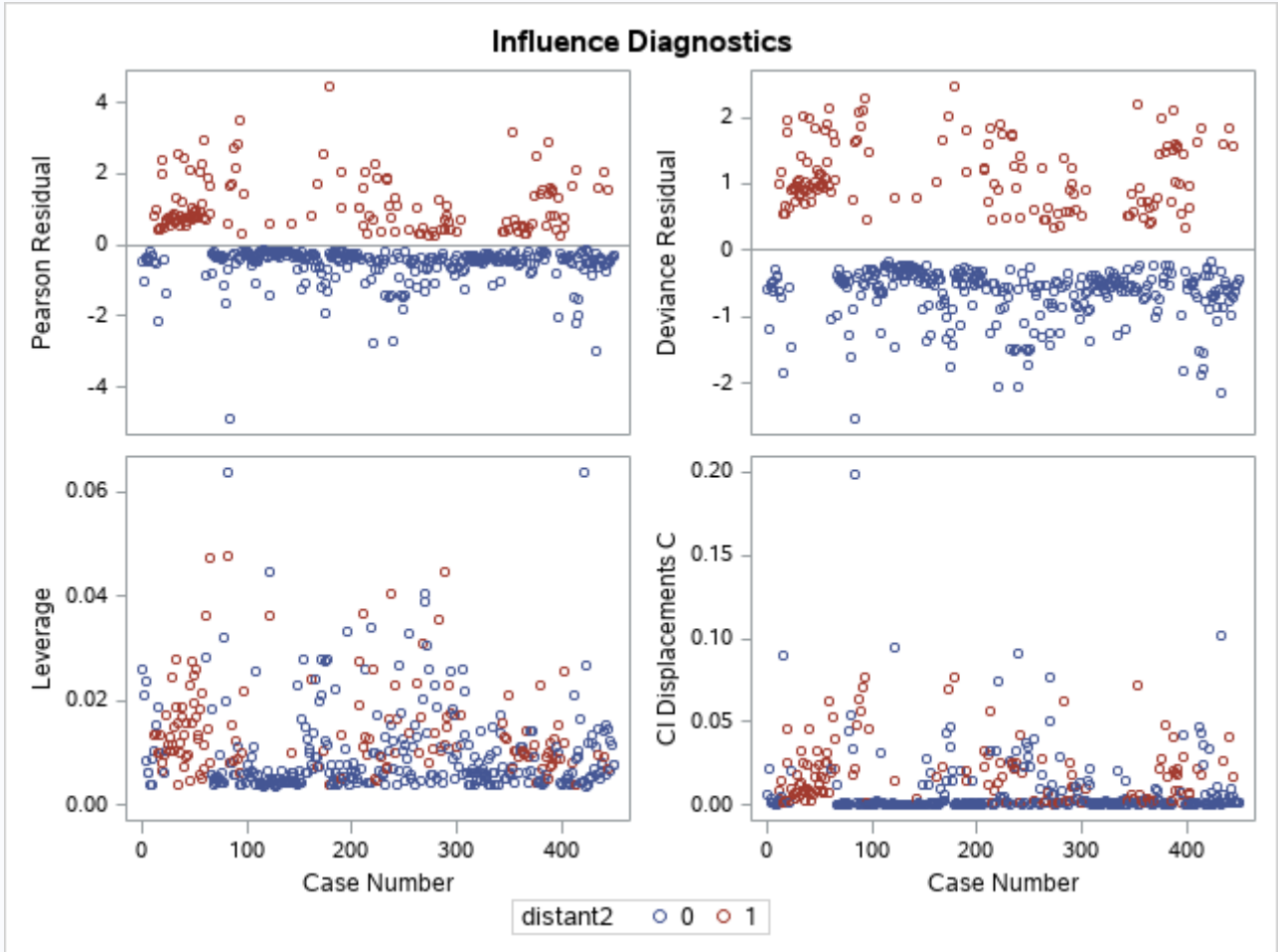
Testing Global Null Hypothesis: BETA=0			
Test	Chi-Square	DF	Pr > ChiSq
Likelihood Ratio	159.8156	4	<.0001
Score	149.2870	4	<.0001
Wald	105.9854	4	<.0001

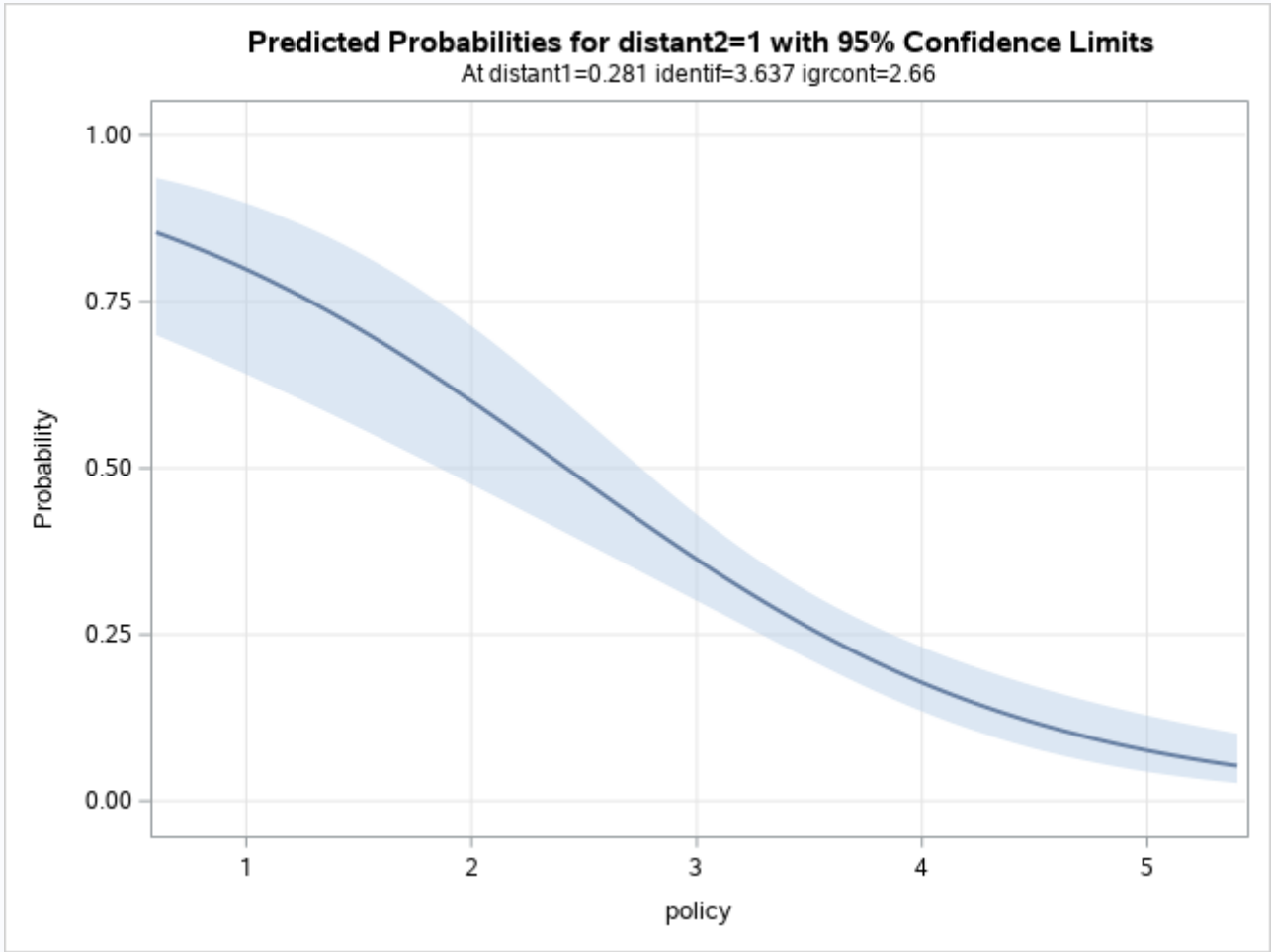
Analysis of Maximum Likelihood Estimates					
Parameter	DF	Estimate	Standard Error	Wald Chi-Square	Pr > ChiSq
Intercept	1	3.8716	0.9224	17.6188	<.0001
policy	1	-0.9697	0.1633	35.2552	<.0001
distant1	1	2.2378	0.2628	72.5365	<.0001
identif	1	-0.2731	0.1545	3.1250	0.0771
igrcont	1	-0.4364	0.1665	6.8669	0.0088

Odds Ratio Estimates			
Effect	Point Estimate	95% Wald Confidence Limits	
policy	0.379	0.275	0.522
distant1	9.373	5.600	15.687
identif	0.761	0.562	1.030
igrcont	0.646	0.466	0.896

Association of Predicted Probabilities and Observed Responses			
Percent Concordant	85.4	Somers' D	0.708
Percent Discordant	14.5	Gamma	0.709

Association of Predicted Probabilities and Observed Responses			
Percent Tied	0.1	Tau-a	0.303
Pairs	42780	c	0.854





**The LOGISTIC Procedure**

Model Information	
Data Set	WORK.COVID
Response Variable	close2
Number of Response Levels	2
Model	binary logit
Optimization Technique	Fisher's scoring

Number of Observations Read	450
Number of Observations Used	448

Response Profile		
Ordered Value	close2	Total Frequency
1	0	356
2	1	92

Probability modeled is close2=1.

**Note:** 2 observations were deleted due to missing values for the response or explanatory variables.

Model Convergence Status
Convergence criterion (GCONV=1E-8) satisfied.

Model Fit Statistics		
Criterion	Intercept Only	Intercept and Covariates
AIC	456.935	375.931

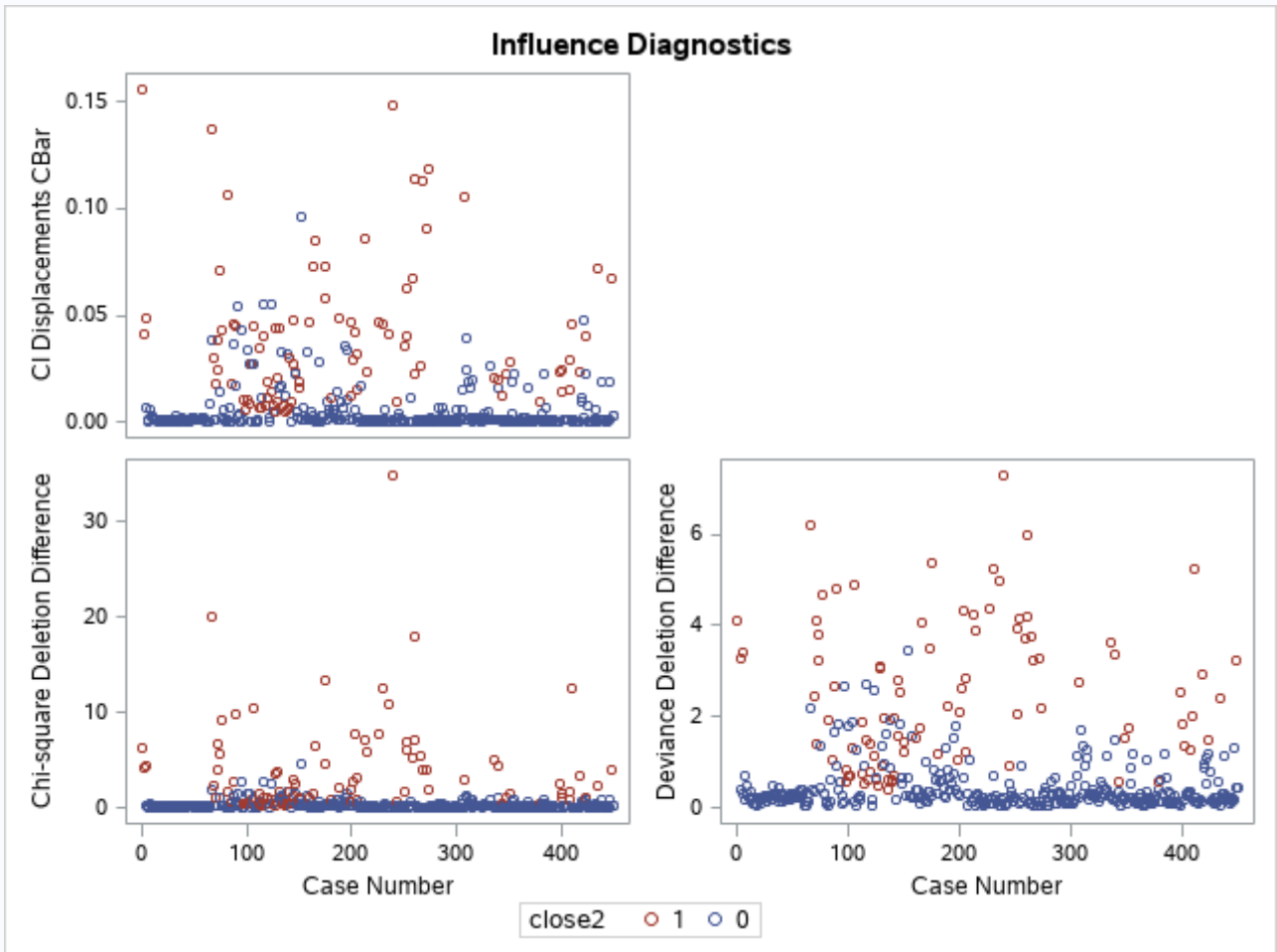
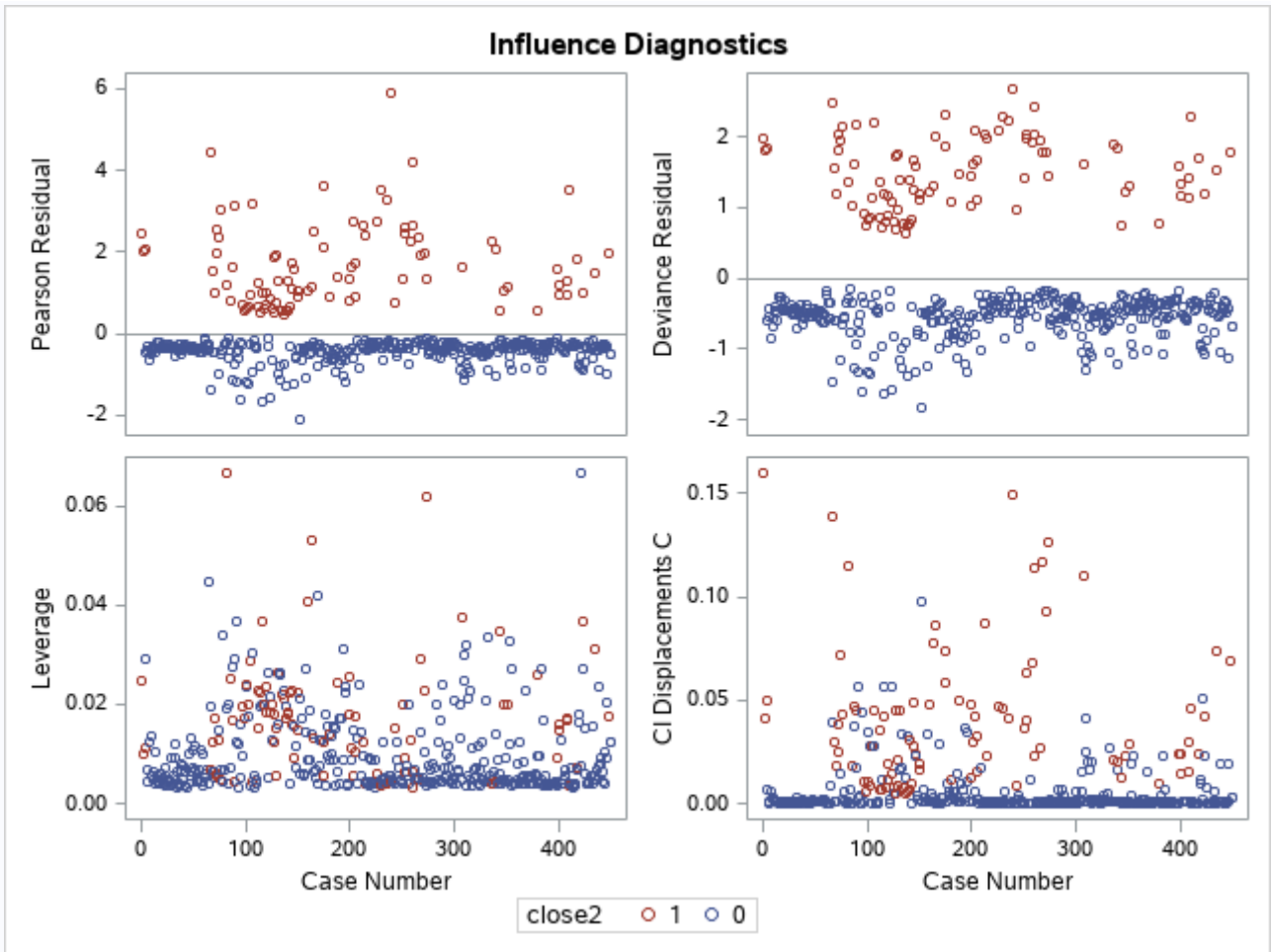
Model Fit Statistics		
Criterion	Intercept Only	Intercept and Covariates
SC	461.040	396.454
-2 Log L	454.935	365.931

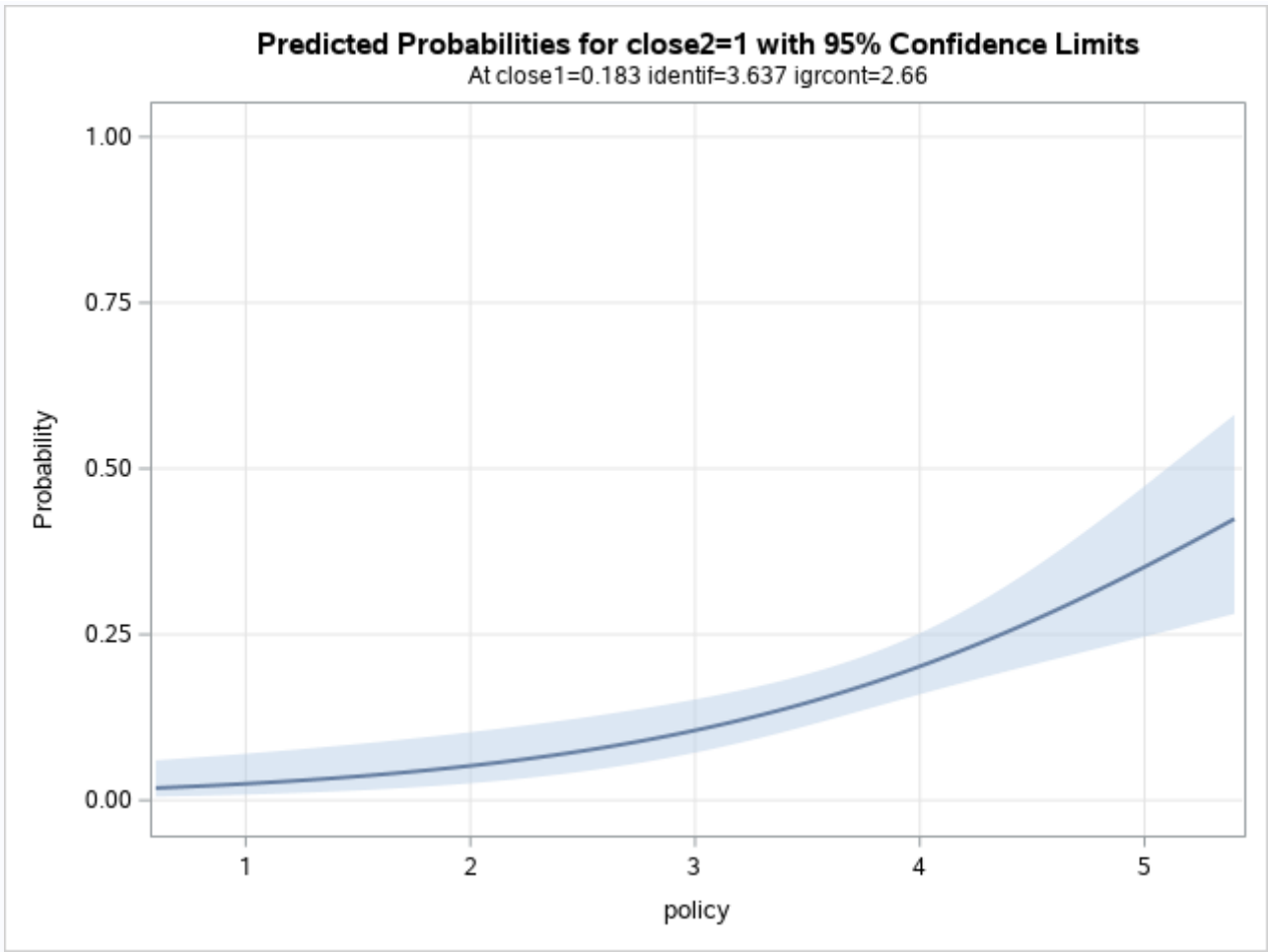
Testing Global Null Hypothesis: BETA=0			
Test	Chi-Square	DF	Pr > ChiSq
Likelihood Ratio	89.0044	4	<.0001
Score	91.7424	4	<.0001
Wald	70.0887	4	<.0001

Analysis of Maximum Likelihood Estimates					
Parameter	DF	Estimate	Standard Error	Wald Chi-Square	Pr > ChiSq
Intercept	1	-6.5467	1.0329	40.1696	<.0001
policy	1	0.7634	0.1868	16.6964	<.0001
close1	1	1.7119	0.2872	35.5359	<.0001
identif	1	0.0867	0.1598	0.2945	0.5873
igrcont	1	0.5602	0.1721	10.6003	0.0011

Odds Ratio Estimates			
Effect	Point Estimate	95% Wald Confidence Limits	
policy	2.146	1.488	3.094
close1	5.540	3.155	9.726
identif	1.091	0.797	1.492
igrcont	1.751	1.250	2.453

Association of Predicted Probabilities and Observed Responses			
Percent Concordant	79.7	Somers' D	0.595
Percent Discordant	20.2	Gamma	0.596
Percent Tied	0.1	Tau-a	0.195
Pairs	32752	c	0.798





The MEANS Procedure

Analysis Variable : prd Estimated Probability				
N	Mean	Std Dev	Minimum	Maximum
896	0.2053572	0.1882873	0.0131791	0.8150817

