
Technical Paper

**Creating Media on a Single-Sided DVD in a
SAS[®] 9.3 Windows Operating Environment**

Table of Contents

Introduction	1
The Process for a Single Site in a Single Order.....	1
Phase I: Create a SAS Software Depot.....	2
Phase II: Subset Your Depot.....	2
Phase III: Edit the New SAS Software Depot.....	10
Phase IV: Create the Physical Media.....	11
Using the Windows Explorer tool for unformatted media.....	12
Using the Windows Explorer tool for previously formatted media	14
Phase V: Install SAS® from the New DVD.....	16
The Process for Multiple Sites in a Single Order.....	17
Phase I: Create a SAS Software Depot.....	17
Phase II: Subset Your Depot.....	25
Phase III: Edit the New SAS Software Depot.....	35
Phase IV: Create the Physical Media.....	36
Using the Windows Explorer tool for unformatted media.....	37
Using the Windows Explorer tool for previously formatted media	39
Phase V: Install SAS® from the New DVD.....	40
Troubleshooting	42
Error: "The following command line arguments are not valid: –subsetnonconfig" ..	42
Error: "The SAS Deployment Wizard cannot be invoked while the SAS Deployment Wizard is running"	42

Introduction

This paper is written for system administrators who want to create a single-sided DVD in a SAS 9.3 Windows operating environment. The following instructions help you reduce the steps that are required to create a working DVD. This is especially useful in an environment such as a university setting, where it is necessary to create media for several users.

Before you begin, determine whether you are going to create a single-sided DVD for a single site or multiple sites within a single order. You can determine whether you have multiple sites in your order by viewing your soi.html file.

The soi.html file is located in the `SAS Software Depot\install_doc\#####` directory, where ##### is your order number. Here is an example:

```
C:\SAS Software Depot\install_doc\012345\soi.html
```

This document includes the following sections:

- [The process for a single site in a single order](#)
- [The process for multiple sites in a single order](#)
- [Troubleshooting](#)

The Process for a Single Site in a Single Order

Important: The instructions in this section apply only to orders that contain the following software products: Base SAS®, SAS/ACCESS® products (except SAS/ACCESS® Interface to R3), SAS/AF®, SAS/ASSIST®, SAS® Bridge for Esri, SAS/CONNECT®, SAS/EIS®, SAS/ETS®, SAS/FSP®, SAS/GRAPH®, SAS/IML®, SAS/INSIGHT®, SAS® Integration Technologies, SAS/LAB®, SAS/OR®, SAS/QC®, SAS/SECURE®, SAS/SHARE®, SAS/STAT®, SAS® Enterprise Guide®, and products that are not configured by the SAS® Deployment Wizard (non-planning orders).

Creating a single-sided DVD for an order that contains a single site requires several phases:

- [Phase I: Create a SAS software depot](#)
- [Phase II: Subset your depot](#)
- [Phase III: Edit the new SAS software depot](#)
- [Phase IV: Create the physical media](#)
- [Phase V: Install SAS from the new DVD](#)

Phase I: Create a SAS Software Depot

There are two ways to create the SAS software depot:

1. **From an electronic download:** The SAS® Download Manager creates the SAS software depot on a local machine (for example, `C:\SAS Software Depot`).

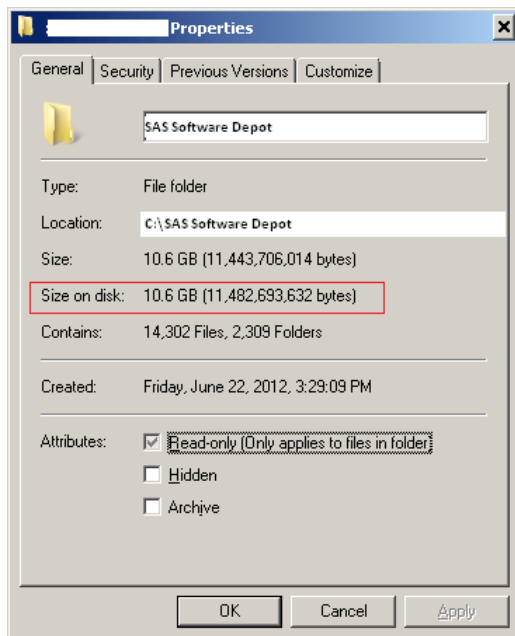
Follow the instructions in your SAS software order e-mail or in the “Creating a SAS Software Depot” section of the *SAS® 9.3 Intelligence Platform: Installation and Configuration Guide* (support.sas.com/documentation/cdl/en/biig/62611/HTML/default/viewer.htm#p03intellplatform00installgd.htm).

2. **From DVDs:** You create a local depot using the SAS Deployment Wizard.

Follow the instructions in the “Create a Depot by Using the SAS Deployment Wizard” section of the *SAS® 9.3 Intelligence Platform: Installation and Configuration Guide* (support.sas.com/documentation/cdl/en/biig/62611/HTML/default/viewer.htm#n03005intellplatform00install.htm).

Phase II: Subset Your Depot

The size of the SAS software depot that you created in [Phase I](#) is too large to burn on a single-sided DVD. You can verify this by opening Windows Explorer, selecting the `x:\SAS Software Depot` directory, and right-clicking **Properties**. The **Size on disk** field shows the amount of disk space that is being used. In the following example, the size of your SAS software depot is 10.6 GB, which is too large to burn on a single-sided DVD.

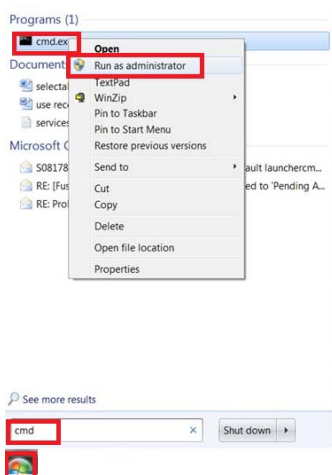


You need to subset your depot, and you do this using the `-subsetnonconfig` command line.

Note: If you encounter any problems running the `-subsetnonconfig` command, see the “[Troubleshooting](#)” section of this paper.

1. Open a command prompt window by selecting **Start ► Run**. Type `cmd` and press Enter.

If you are running Windows 7, select **Start ► Run** and type `cmd`. On the **Programs** menu, right-click `cmd.exe` and select **Run as Administrator**.



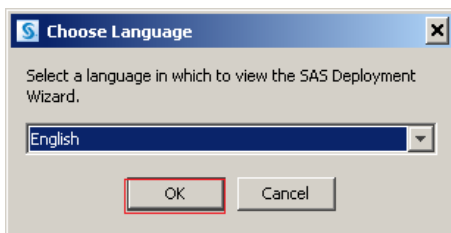
2. Run the SAS software depot installation with the `-subsetnonconfig` command line.

From the command prompt, enter the following to change directory to the new SAS software depot location and run `setup.exe` with the `-subsetnonconfig` command line. (Press Enter after each line.)

```
cd\  
cd C:\SAS Software Depot  
setup.exe -subsetnonconfig
```

Note that `C:\SAS Software Depot` is the location of your order, which you downloaded in [Phase I](#) (modify the path accordingly).

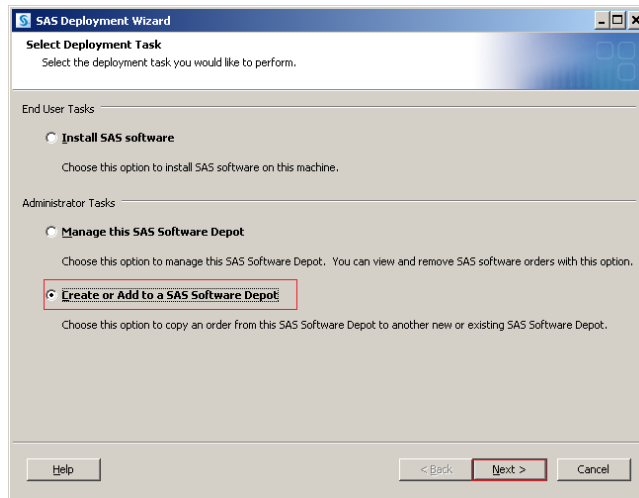
3. Select a language for the SAS Deployment Wizard and click **OK**.



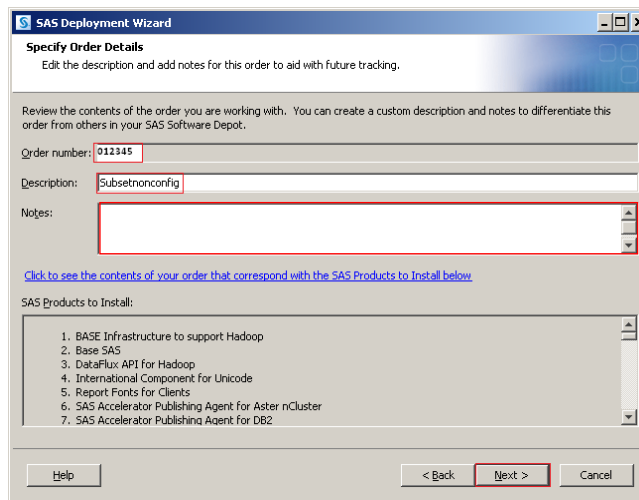
4. Create a subset of your depot (that is, a smaller depot).
 - a. Start the SAS Deployment Wizard.



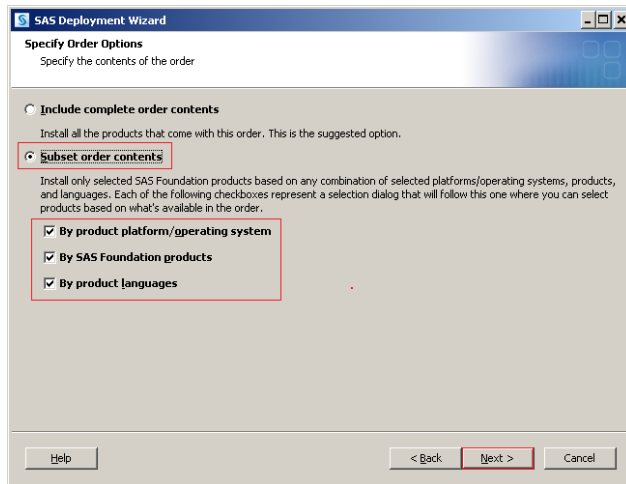
- b. Select **Create or Add to a SAS Software Depot** and click **Next**.



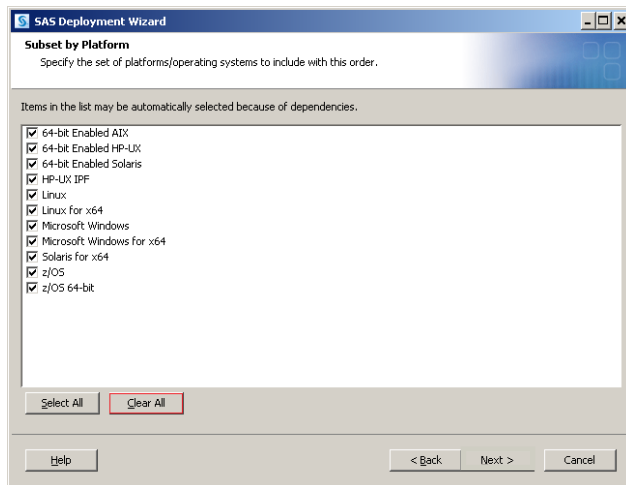
- c. You can enter a description and notes, such as subsetnonconfig depot, on the **Specify Order Details** page. (This is optional but recommended.) Click **Next**.



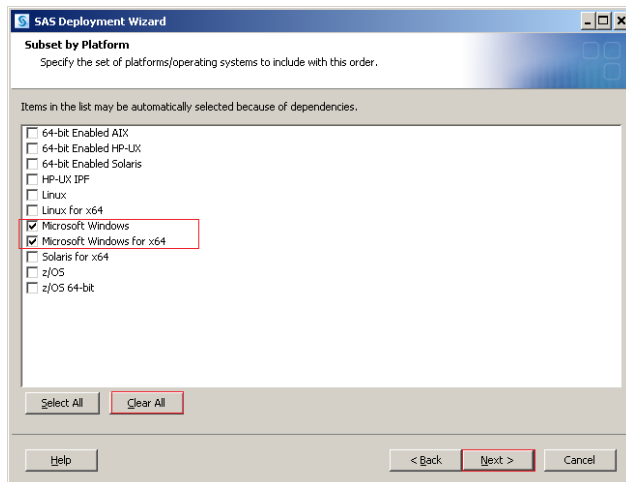
- d. Select **Subset order contents**, **By product platform/operating system**, **By SAS Foundation products**, and **By product languages**. Click **Next**.



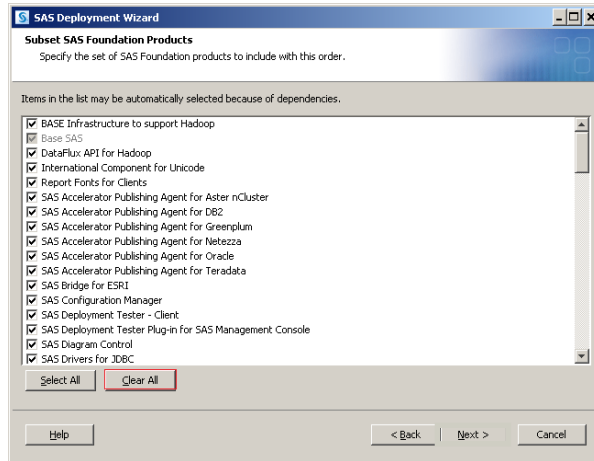
- e. On the **Subset by Platform** page, select **Clear All**.



Next, select **Microsoft Windows for x64** (**Microsoft Windows** is also selected). Click **Next**.

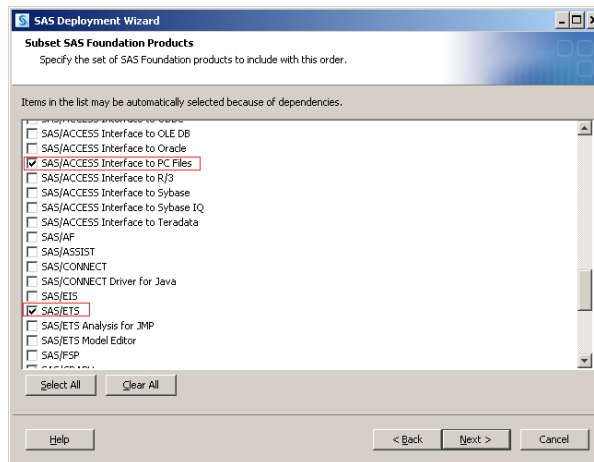
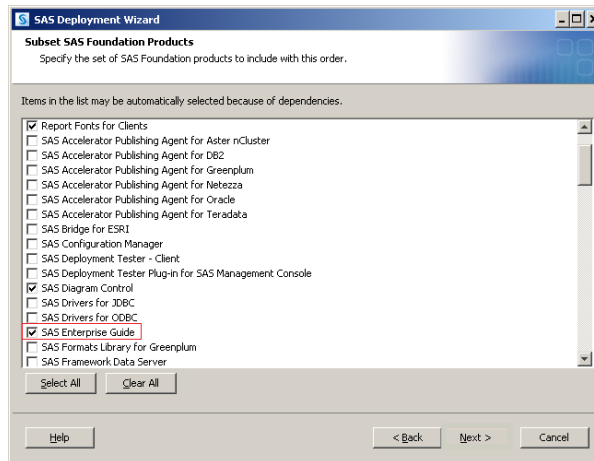


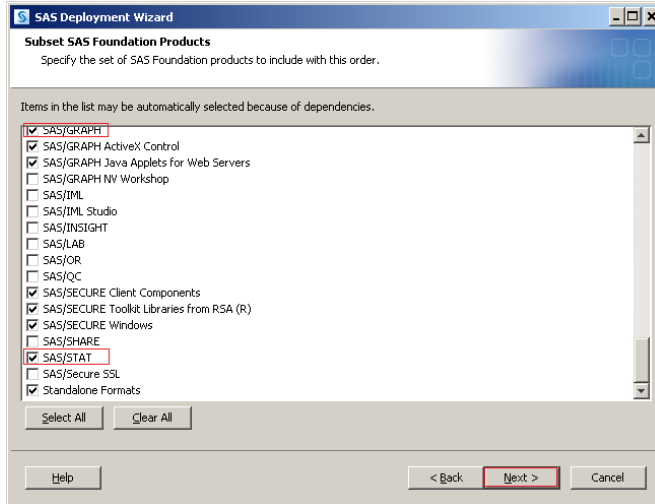
- f. On the **Subset SAS Foundation Products** page, **Base SAS** is selected by default. First, clear the defaults by selecting **Clear All**. (Some of the products remain selected by default).



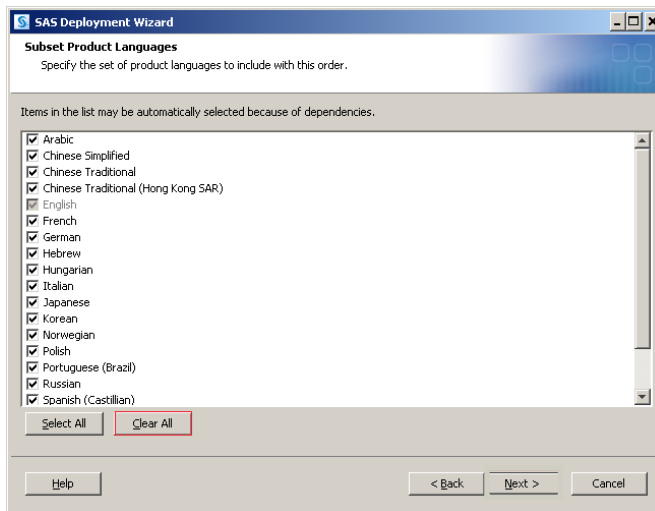
Next, select **SAS Enterprise Guide**, **SAS/ACCESS Interface to PC Files**, **SAS/ETS**, **SAS/GRAPH**, and **SAS/STAT**. Click **Next**.

Note that when you select some products, other products are automatically selected due to dependencies.

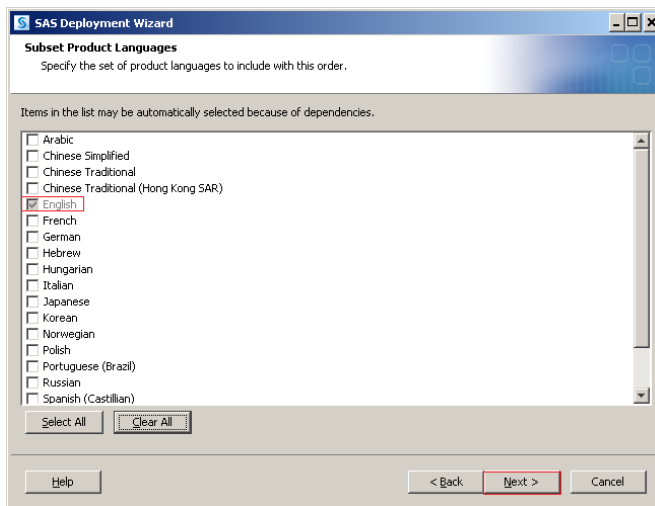




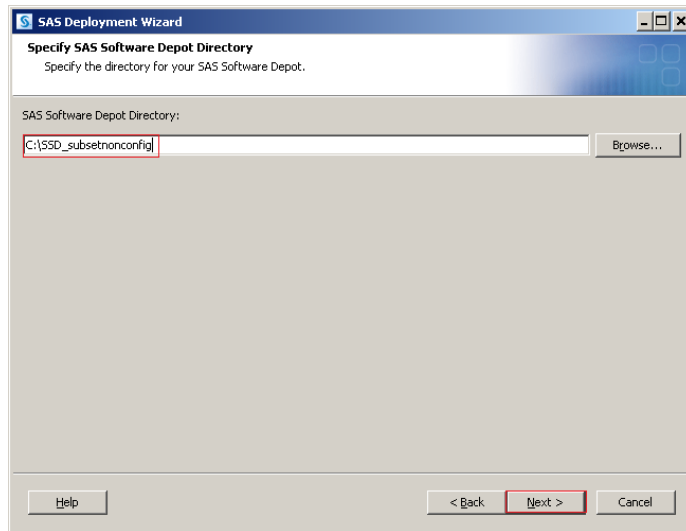
g. On the **Subset Product Languages** page, select **Clear All**.



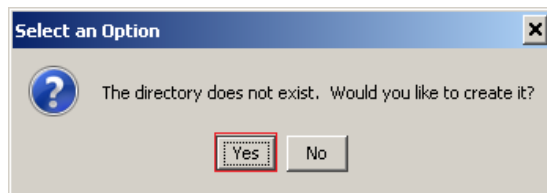
English remains selected by default. Click **Next**.



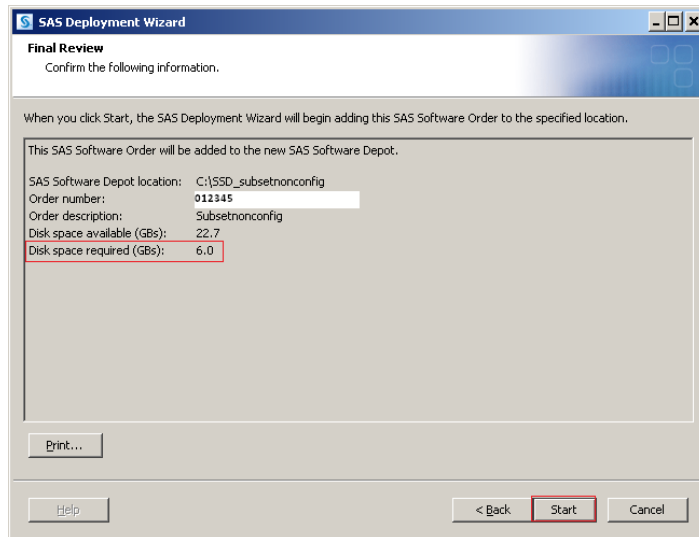
- h. Enter the new SAS software depot directory (for example, `C:\SSD_subsetnonconfig`) and click **Next**.

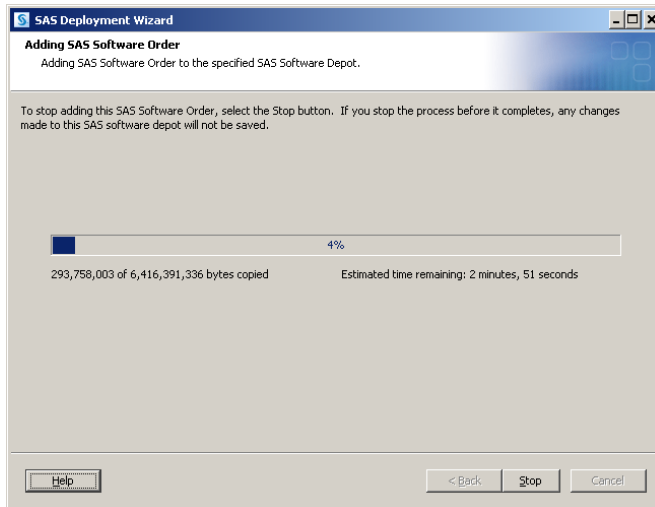


- i. If prompted, click **Yes** to create the new directory.

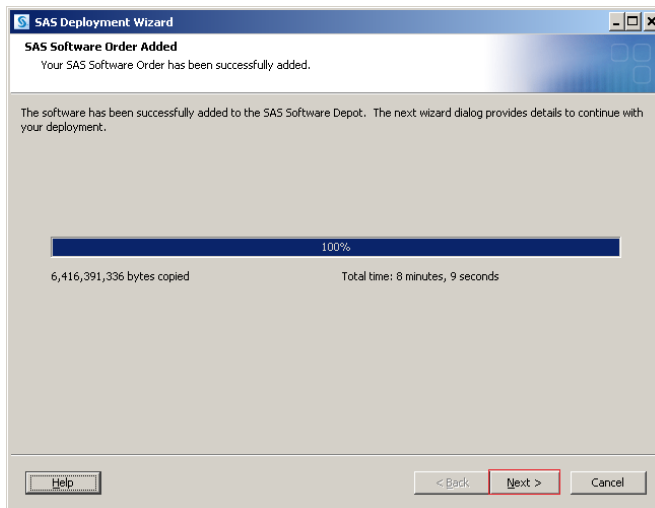


- j. Notice on the **Final Review** page that the disk space that is required for the SAS software depot is 6.0 GB (the original depot size was 10.6 GB). Click **start** and let the process run.

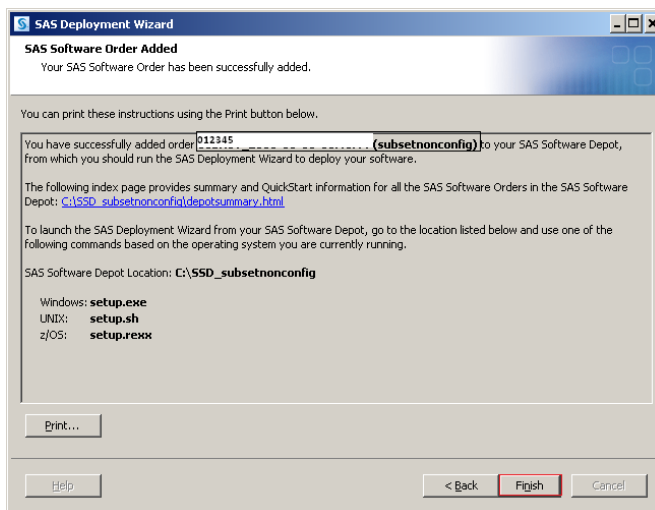




k. When your SAS software order has been successfully added, click **Next**.

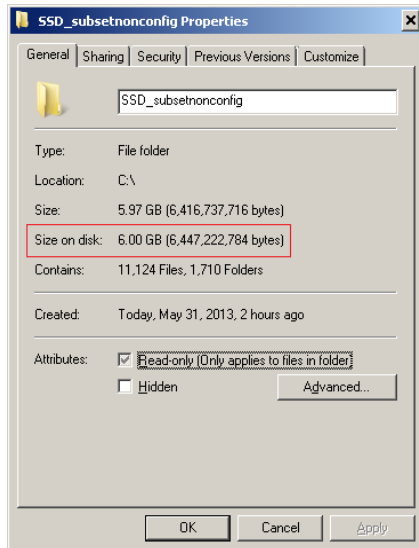


l. Click **Finish** on the **SAS Software Order Added** page.



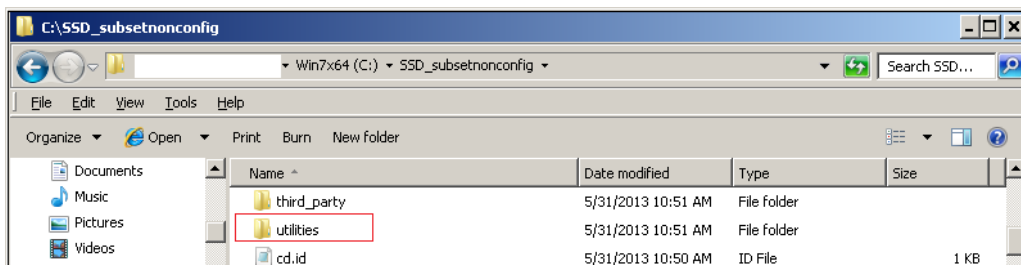
Phase III: Edit the New SAS Software Depot

Open Windows Explorer, select the `x:\SAS-software-depot-name` directory, and right-click **Properties**. The **Size on disk** field shows the amount of disk space that is being used for the smaller SAS software depot that you created in [Phase II](#). (It is 6.0 GB in the example below). However, this size is still too large to burn on a single-sided DVD.

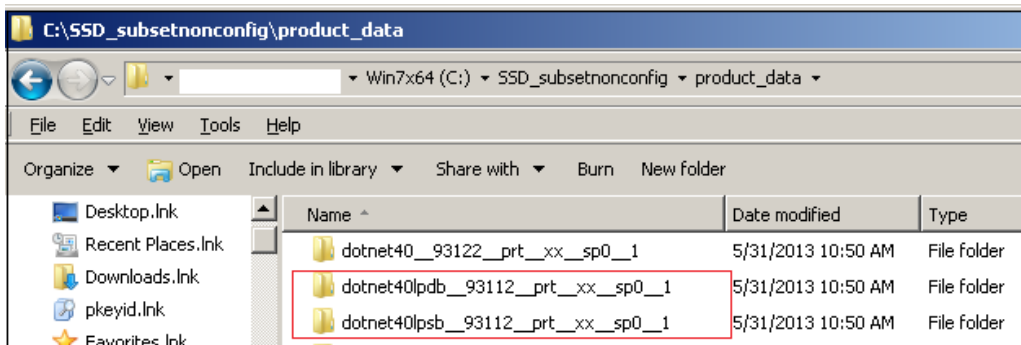


To further reduce the size, start Windows Explorer and delete the following directories:

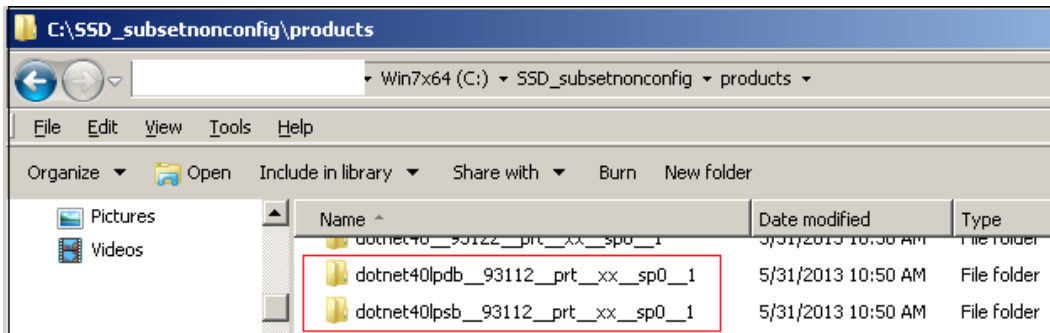
- the `new-depot-location\utilities` directory (for example, `C:\SSD_subsetnonconfig\utilities`)



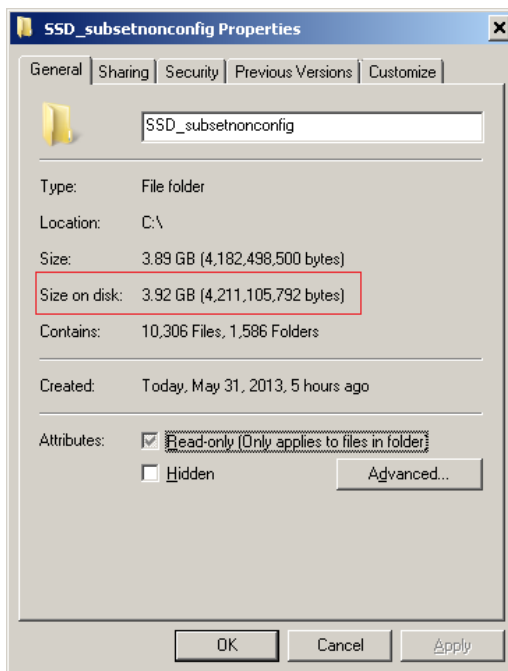
- the `new-depot-location\product_data\dotnet40lp*` directories (for example, `C:\SSD_subsetnonconfig\product_data\dotnet40lpdb_93112_prt_xx_sp0_1` and `C:\SSD_subsetnonconfig\product_data\dotnet40lpsb_93112_prt_xx_sp0_1`)



- the *new-depot-location*\products\dotnet40lp* directories (for example, C:\SSD_subsetnonconfig\products\dotnet40lpdb_93112_prt_xx_sp0_1 and C:\SSD_subsetnonconfig\products\dotnet40lpsb_93112_prt_xx_sp0_1)



Next, open Windows Explorer, select the *x:\SAS-software-depot-name* directory (for example: C:\SSD_subsetnonconfig), and right-click **Properties**. Notice that the size of the depot (3.92 GB in the example below) can now fit on a single-sided DVD.



Phase IV: Create the Physical Media

Burn the remaining contents of the *new-depot-location* to a DVD. If you want the SAS Deployment Wizard executable (setup.exe) to be at the root level of the DVD, then exclude the top-level directory.

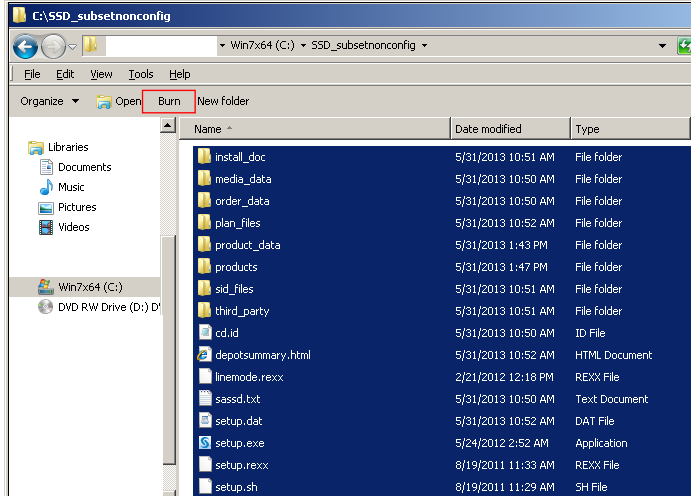
The following instructions use the tools that are available in the Windows 7 operating environment.

There are two processes for creating the physical media using the Windows Explorer tool under Windows 7:

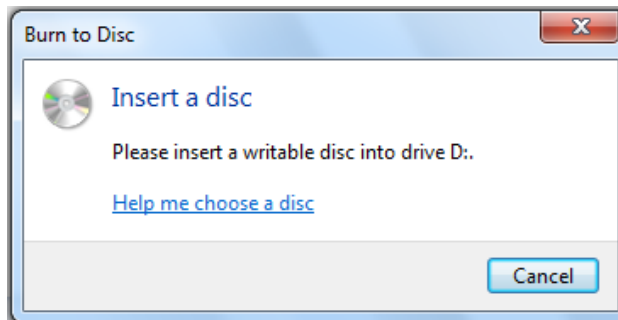
- Your media needs to be formatted.
- Your media is already formatted.

Using the Windows Explorer tool for unformatted media

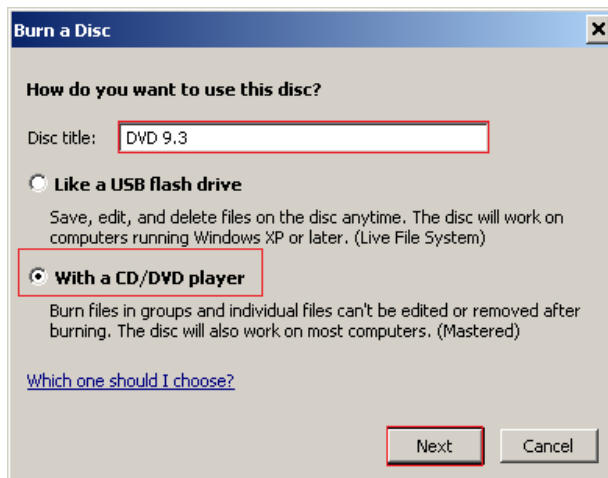
1. Right-click the **Start** button, select **Windows Explorer**, and open the **SAS Software Depot** directory. Next, press Ctrl+A to select all of the files and Ctrl + C to copy all of the files. Click **Burn** in the upper left corner in Windows Explorer.



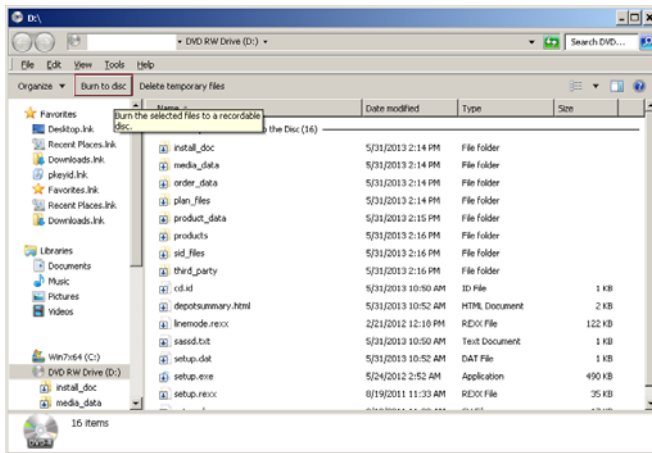
2. You are prompted to insert a disc and the DVD drawer opens on the PC. Insert a blank DVD in the DVD drive.



3. In response to **How do you want to use this disc?**, enter a disc title, select **With a CD/DVD player**, and click **Next**.

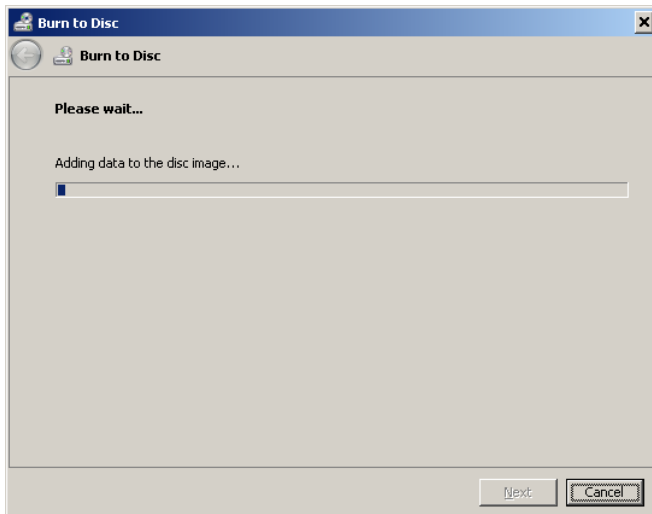
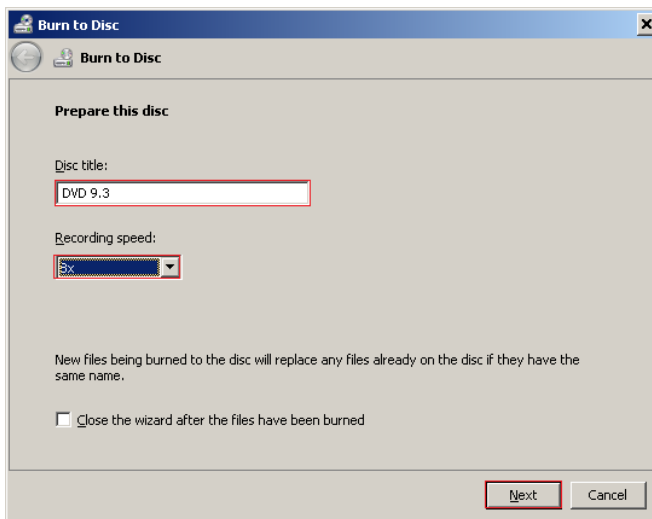


- Windows Explorer opens and **Files Ready to Be Written to Disc** is displayed. Click **Burn to disc**.

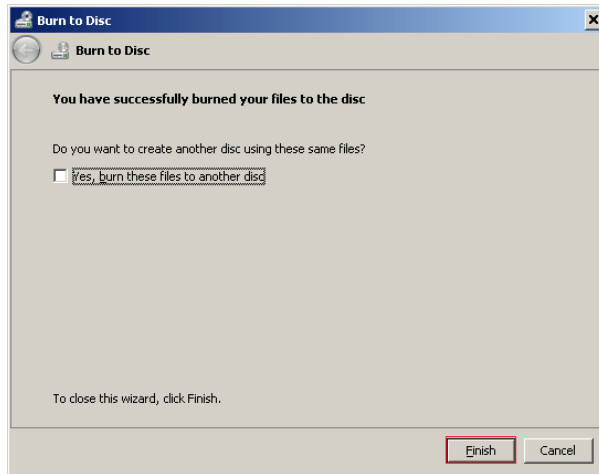


Files Ready to Be Written to the Disc

- The following dialog boxes are displayed when the disc needs to be prepared (formatted). Click **Next** and wait for the process to finish.

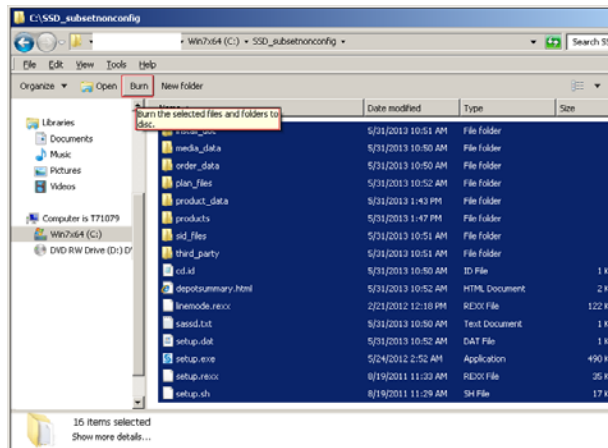


- Click **Finish**. The DVD drawer on your PC opens.

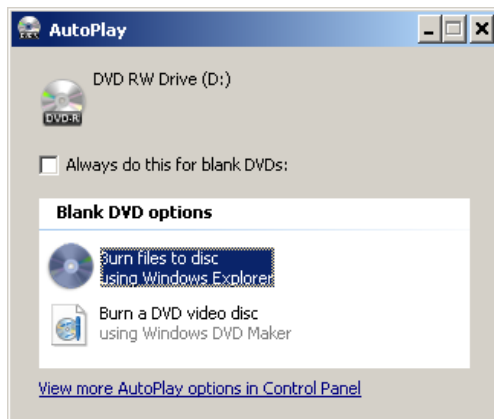


Using the Windows Explorer tool for previously formatted media

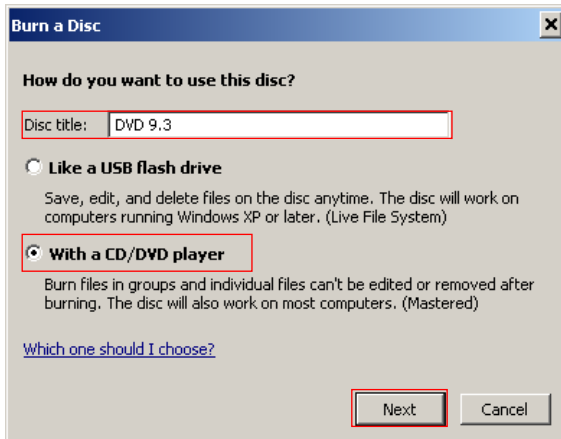
- Right-click the **Start** button, select **Windows Explorer**, and open the **SAS Software Depot** directory. Then press **Ctrl+A** to select all the files and **Ctrl+C** to copy all the files. Click **Burn**.



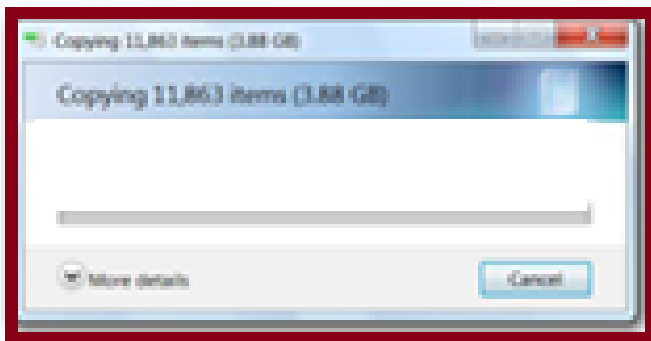
- Insert the DVD in the DVD drive.



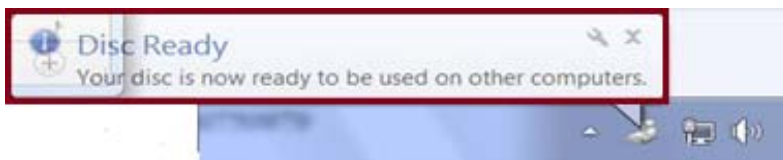
3. Enter the disc title, select **With a CD/DVD Player** (in most cases, select **With a CD/DVD Player** so that the files are not overwritten), and click **Next**.



4. You see the following dialog box during the copy process. Let the copy process complete.



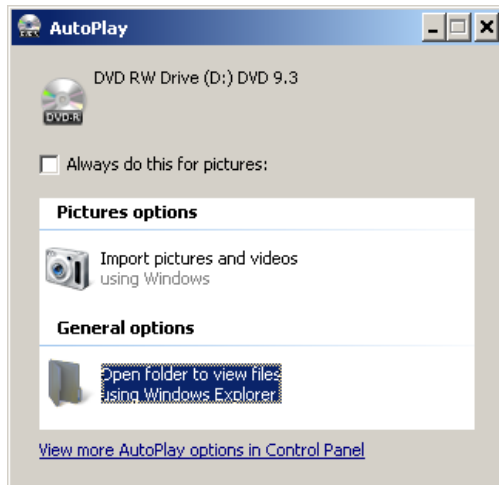
When the disc is finished, the **Disk Ready** box is displayed.



Phase V: Install SAS® from the New DVD

To install SAS from the new DVD on other machines, perform the following steps:

1. Insert the new DVD in the DVD drive. If you are running the AutoPlay option, the following pop-up window appears:



2. If you are not running the AutoPlay option, right-click **start** and select **Open Windows Explorer**.
3. Under a Windows 7 system, right-click **setup.exe** and select **Run as Administrator**.
Under a Windows XP system, double-click **setup.exe**.
4. Complete the installation by following the instructions in the “QuickStart Guide: SAS® 9.3 Installation Kit for Basic Deployments using DVDs: Windows and Windows for x64” (support.sas.com/documentation/installcenter/en/ikqsgbasicmediawin/64911/PDF/default/quickstart_media.pdf).

Note that unless the Administrator copies the updated SAS Installation Data (SID) file from the `sid_files` folder on the DVD, you might need to obtain that file from the SAS Installation Representative in order to continue the installation.

It is important that the site number in your SID file matches the order that is on the physical media. To verify the site number, go to the `soi.html` file located in the *SAS-Software-Depot* or the `DVD\install_doc\#####` directory, where `#####` is the order number (for example, `d:\install_doc\012345\soi.html`).

Look for the following information:

Tech Support Site Number:

12345678

The license file that you will need to perform the installation must include the site number in the name. Here is an example:

```
SAS93_012345_12345678_Win_X64_Wrkstn_Srv.txt
```

For more details see SAS Note 37499 "The message 'Install failed to initialize for: SAS Foundation' displays when you install SAS 9.2 from a DVD" (support.sas.com/kb/37/499.html).

The Process for Multiple Sites in a Single Order

Important: The instructions in this section apply only to orders that contain the following software products: Base SAS,® SAS/ACCESS® products (except SAS/ACCESS® Interface to R3), SAS/AF,® SAS/ASSIST,® SAS® Bridge for Esri, SAS/CONNECT,® SAS/EIS,® SAS/ETS,® SAS/FSP,® SAS/GRAPH,® SAS/IML,® SAS/INSIGHT,® SAS® Integration Technologies, SAS/LAB,® SAS/OR,® SAS/QC,® SAS/SECURE,® SAS/SHARE,® SAS/STAT,® products that are not configured by the SAS Deployment Wizard (non-planning orders), and an order that is an Electronic Software Delivery.

Creating a single-sided DVD for an order that contains multiple site numbers requires several phases:

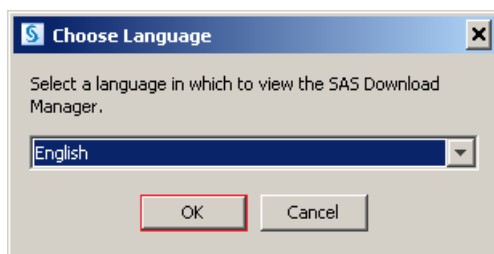
- Phase I: Create a SAS software depot
- Phase II: Subset your depot
- Phase III: Edit the new SAS software depot
- Phase IV: Create the physical media
- Phase V: Install SAS from the new DVD

Phase I: Create a SAS Software Depot

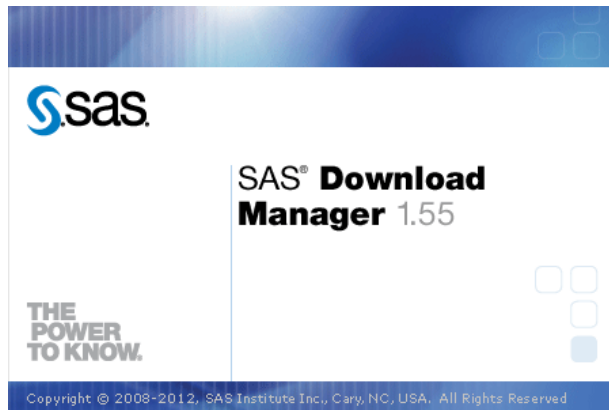
1. From the following link, download and run the SAS Download Manager for the operating system of the machine on which you are working (support.sas.com/demosdownloads/setupcat.jsp;jsessionid=CD0722A5BD1B01EE94966342F983EDB6.tc5j5_exte_rnal_w1?cat=SAS+Download+Manager).

For example, if your system is based on a Windows 7 x64 operating system, you select the filename `esdclient__93480__wx6__xx__web__1.exe` for Microsoft Windows for x64.

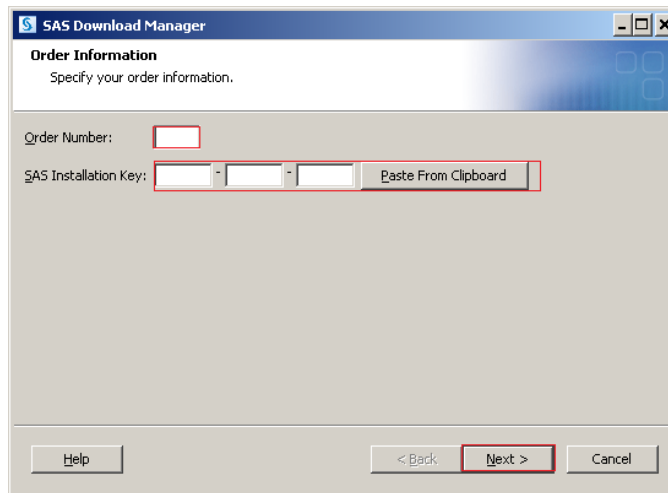
2. On the **Choose Language** page, select a language for the SAS Download Manager. (The default is **English**.) Click **OK**.



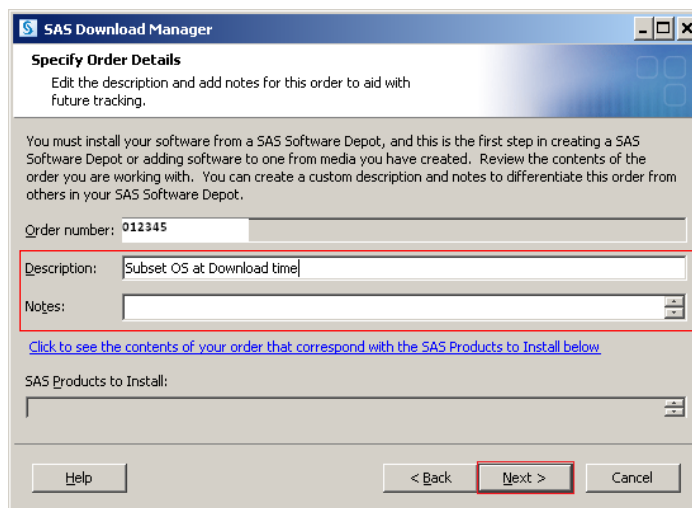
3. The SAS Download Manager 1.55 window is displayed.



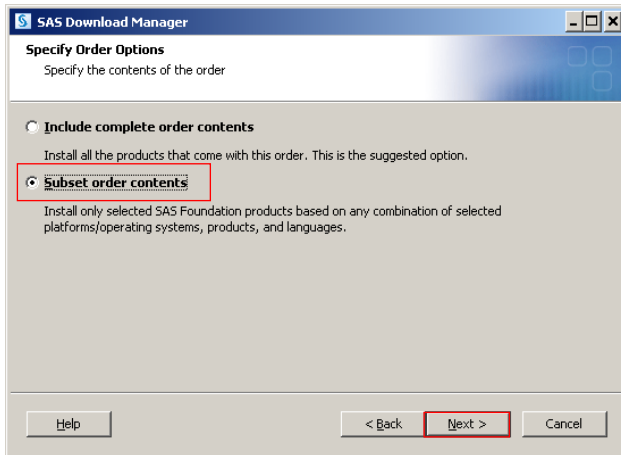
4. On the Order Information page, type your order number and SAS installation key. Click Next.



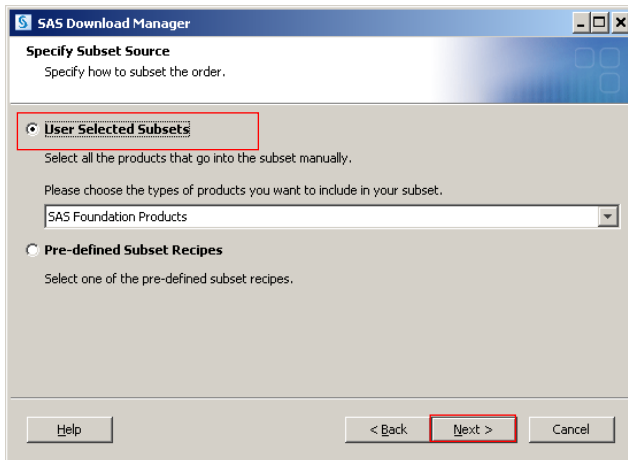
5. On the Specify Order Details page, you can enter a description and notes for the order. (This is optional but recommended.) Click Next.



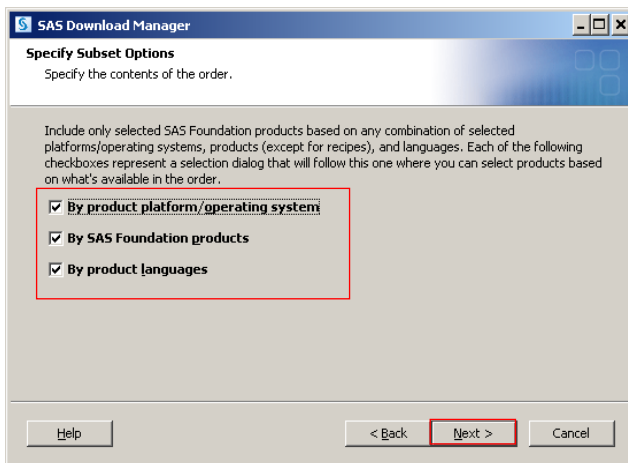
- On the **Specify Order Options** page, select **Subset order contents** and click **Next**.



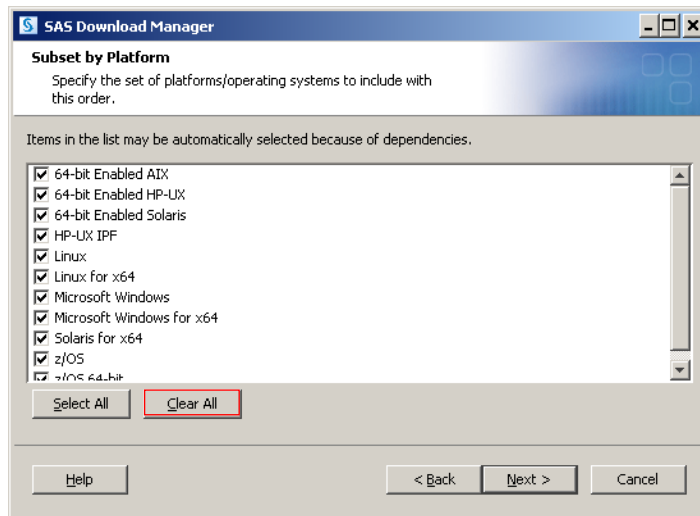
- On the **Specify Subset Source** page, select **User Selected Subsets** and click **Next**.



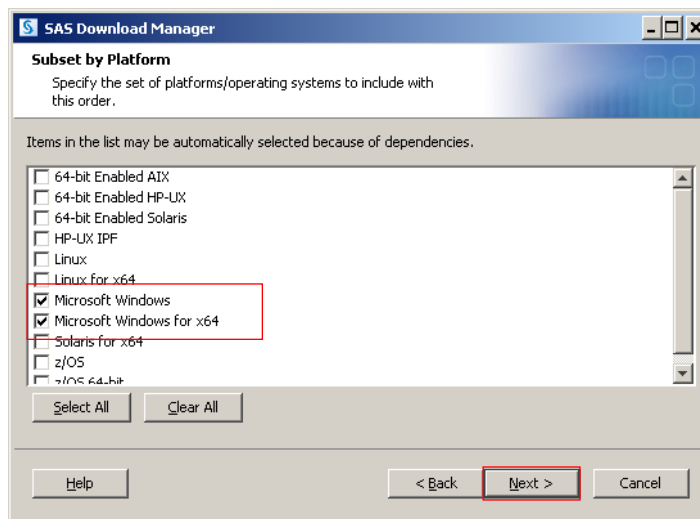
- On the **Specify Subset Options** page, select **By product platform/operating system**, **By SAS Foundation products**, and **By product languages**, and click **Next**.



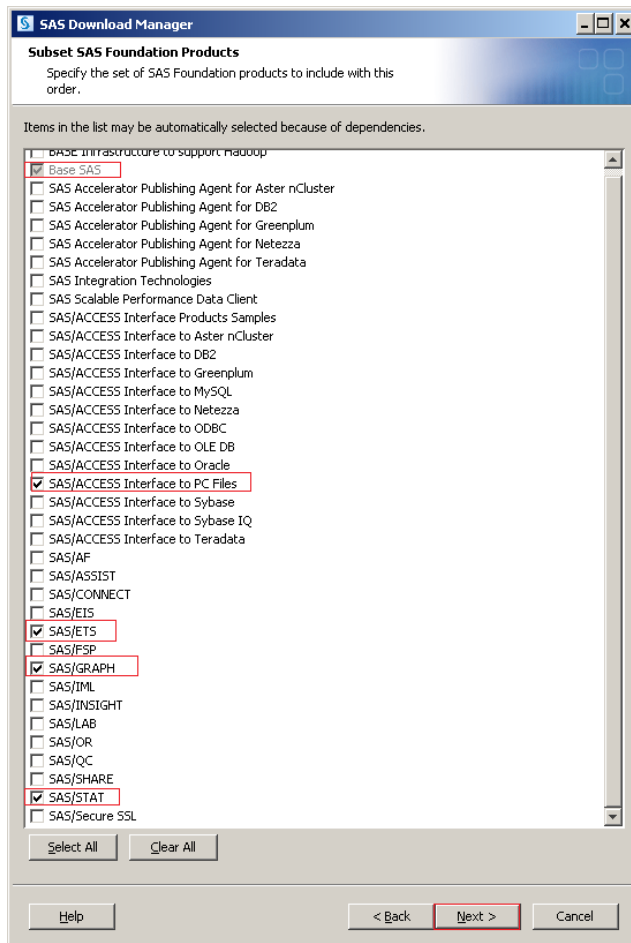
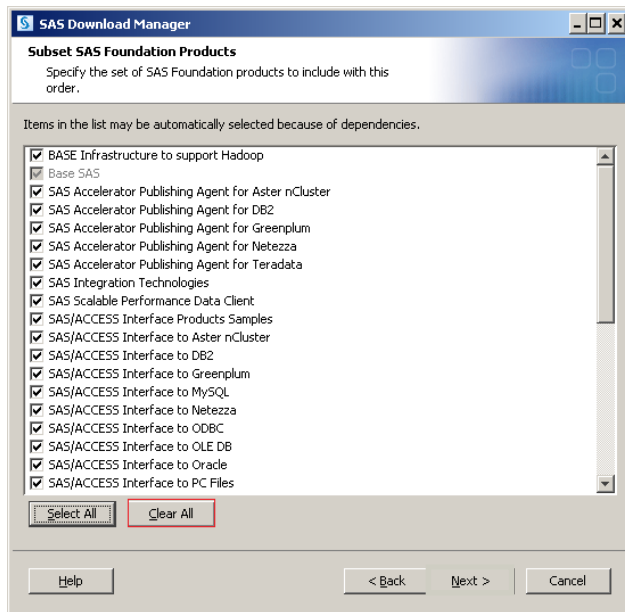
- On the **Subset by Platform** page, select **Clear All**.



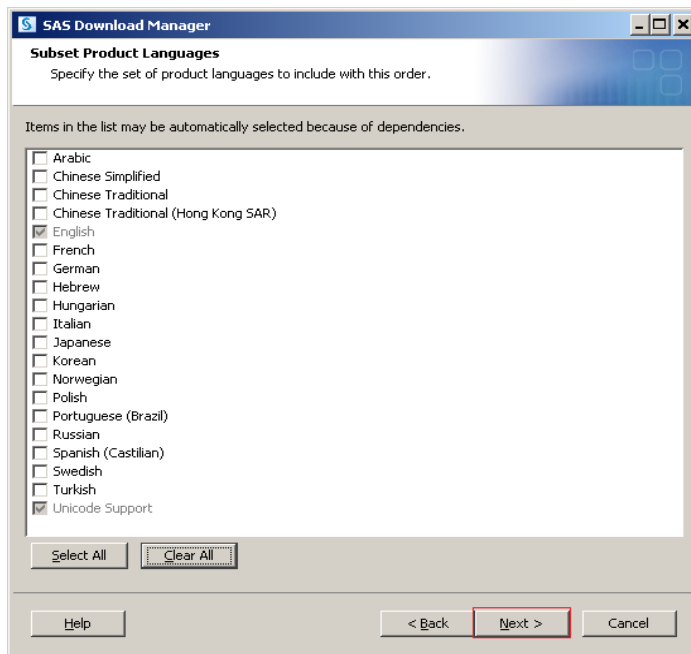
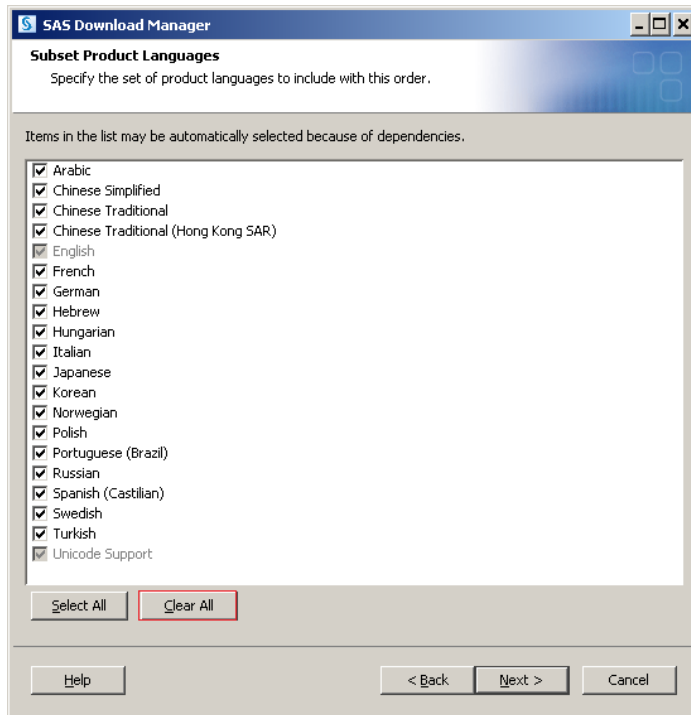
- On the **Subset by Platform** page, select **Microsoft Windows for x64** (Microsoft Windows is selected by default) and click **Next**. If this is a 32-bit order, only select **Microsoft Windows**.



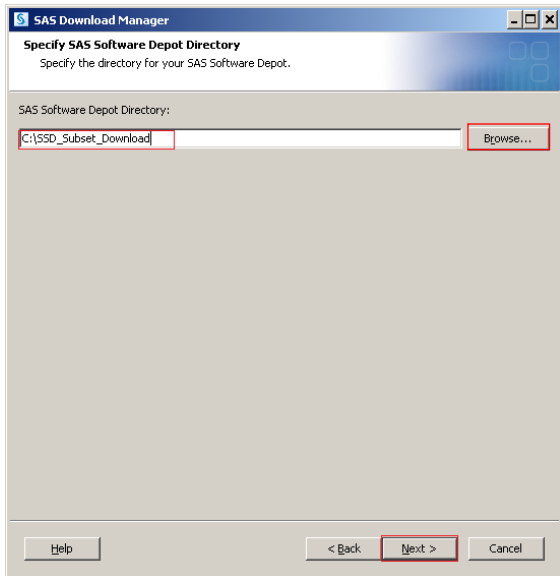
- On the **Subset SAS Foundation Products** page, first click **Clear All**. Then select **SAS/ACCESS Interface to PC Files**, **SAS/ETS**, **SAS/GRAPH**, and **SAS/STAT**. Note that **Base SAS** is selected by default. If SAS Enterprise Guide is part of your order, you can also select that product. Click **Next**.



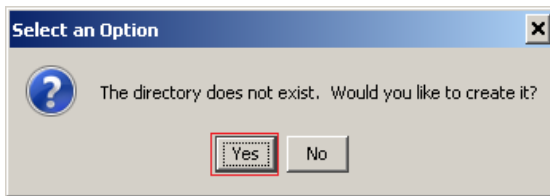
- On the **Subset Product Languages** page, select **Clear All** and click **Next**. **English** remains selected by default.



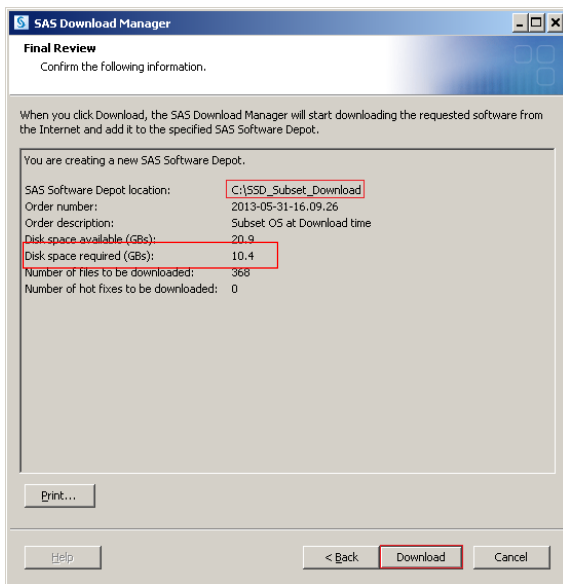
- On the **Specify SAS Software Depot Directory** page, click **Browse** to locate the new SAS software depot directory or enter the new SAS software depot directory and click **Next**.



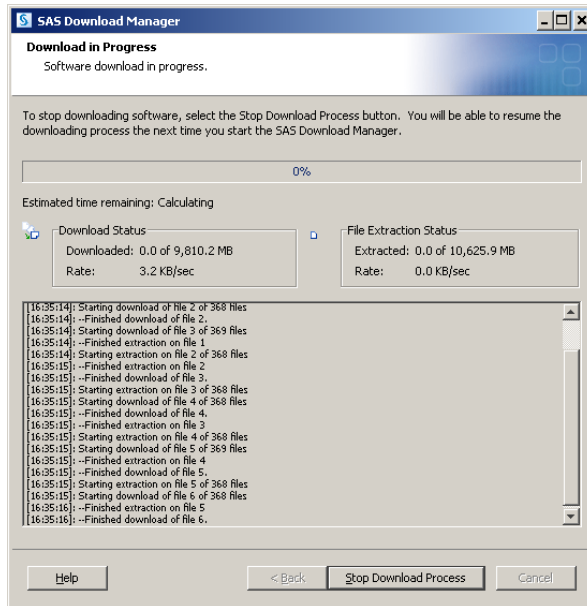
- If prompted, click **Yes** to create the new directory.



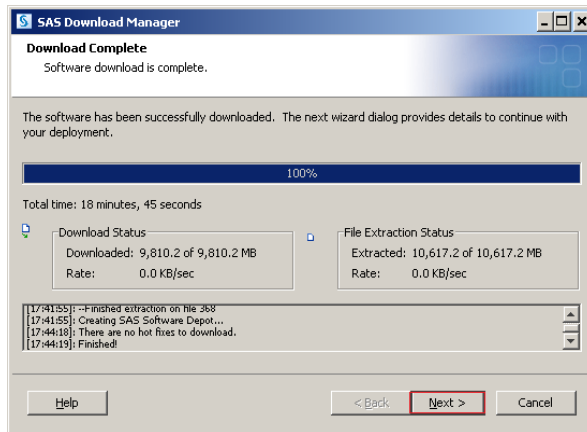
- Notice the disk space that is required on the **Final Review** page and click **Download**.



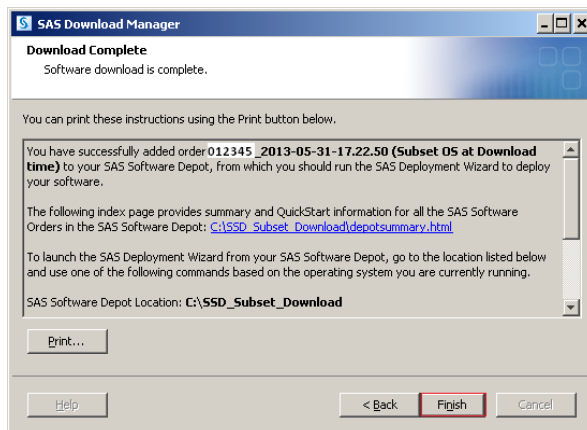
16. The **Download in Progress** page appears. There is nothing for you to do on this page.

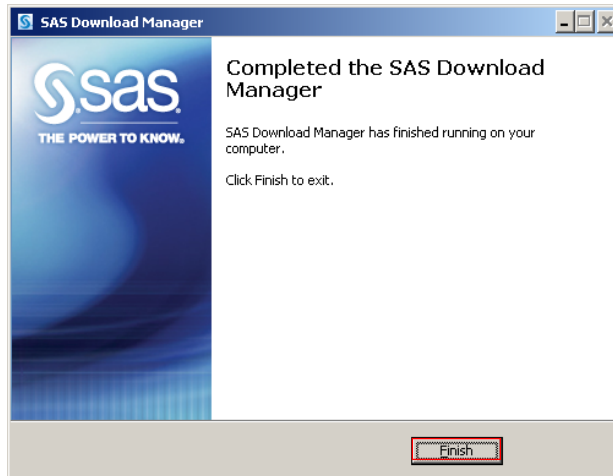


17. On the **Download Complete** page, click **Next**.

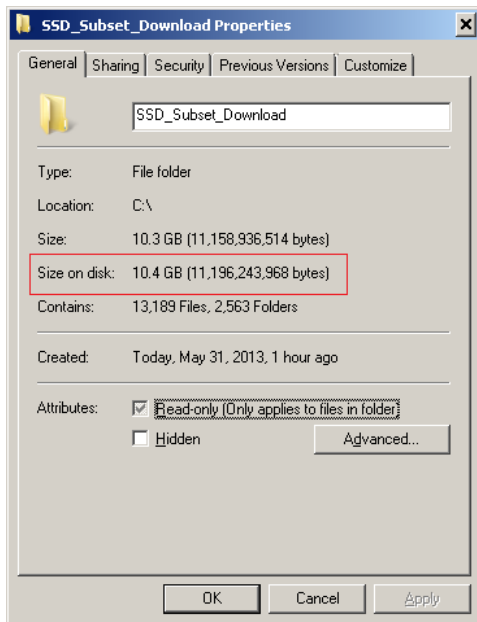


18. Click **Finish** twice.





Open Windows Explorer, select the `x:\SAS-software-depot-name` directory, and right-click **Properties**. The **Size on disk** field shows the amount of disk space that is being used for the smaller SAS software depot that you created in [Phase I](#). (It is 10.4 GB in the example below.) This size is too large to burn on a single-sided DVD. You have to subset your depot.



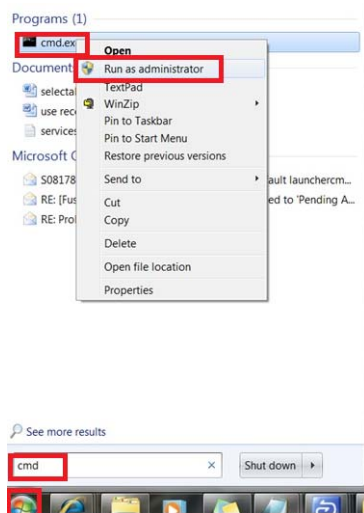
Phase II: Subset Your Depot

Subset your depot using the `-subsetnonconfig` command line.

Note: If you encounter any problems running the `-subsetnonconfig` command, see the [“Troubleshooting”](#) section of this paper.

1. Select **Start ► Run**, type `cmd`, and press Enter.

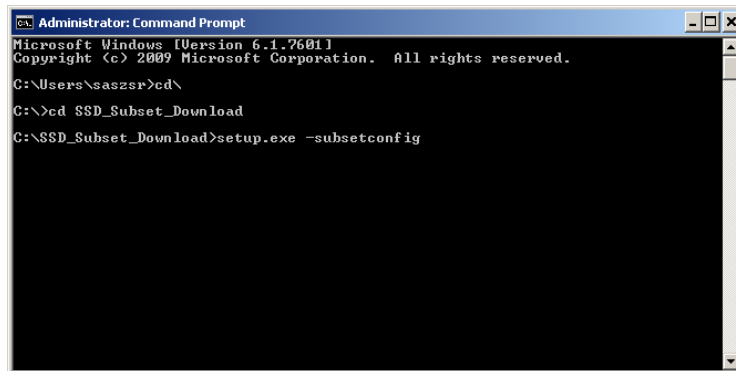
If you are running a Windows 7 system, select **Start ► Run** and type `cmd`. In the **Programs** menu, right-click `cmd.exe`, and select **Run as Administrator**.



2. At the command prompt, enter the following to change directory to the new SAS software depot location and run `setup.exe` with the `-subsetnonconfig` command line. (Press Enter after each line.)

```
cd\  
cd C:\SSD_Subset_Download  
setup.exe -subsetnonconfig
```

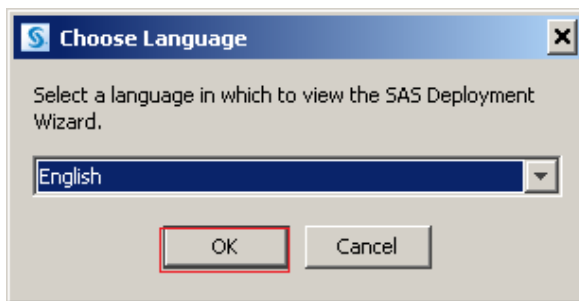
Note that `C:\SSD_Subset_Download` is the location of your order, which you downloaded in [Phase 1](#) (modify the path accordingly).



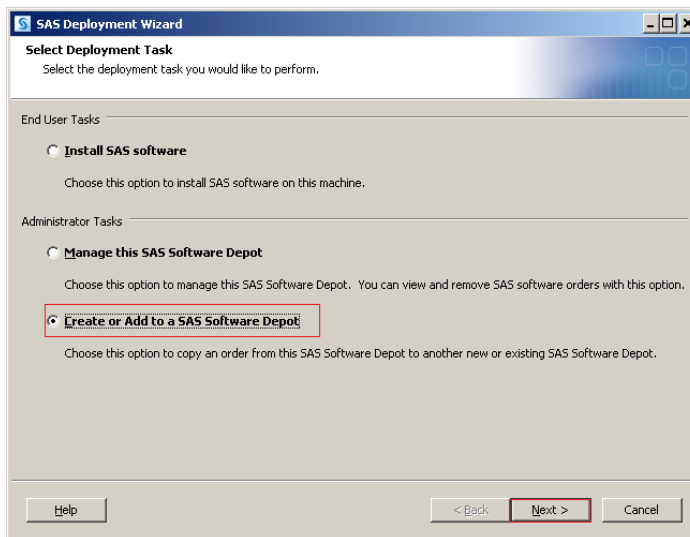
3. Create a subset of your depot (that is, a smaller depot).
 - a. Start the SAS Deployment Wizard.



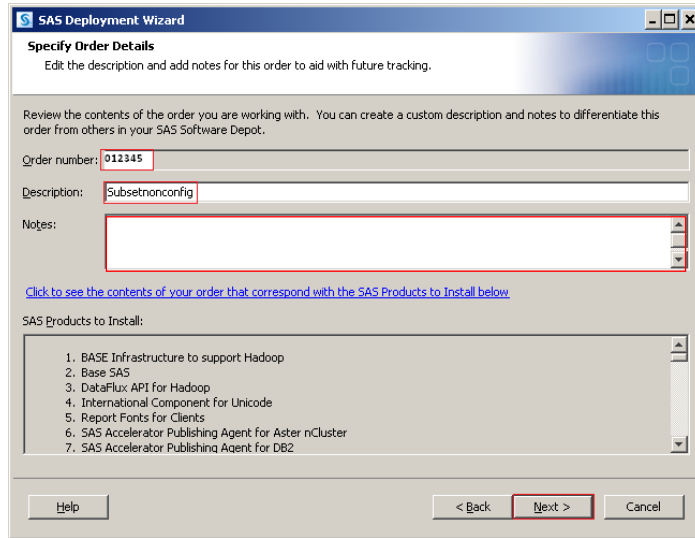
- b. Choose a language and click **OK**.



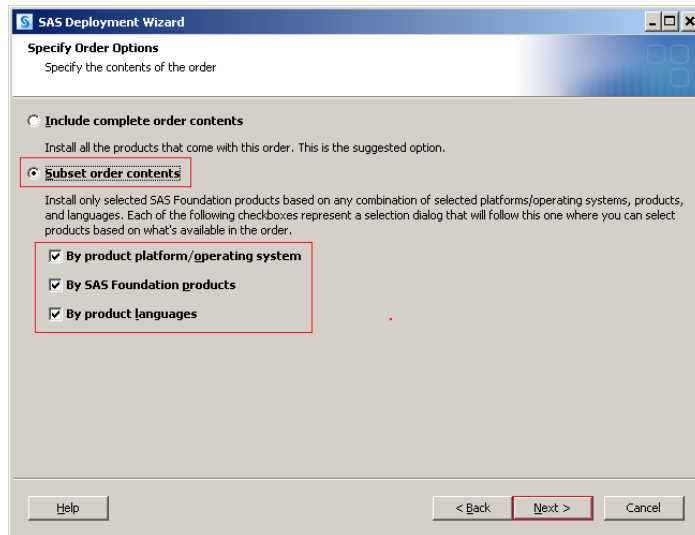
- c. On the **Select Deployment Task** page, select **Create or Add to a SAS Software Depot** and click **Next**.



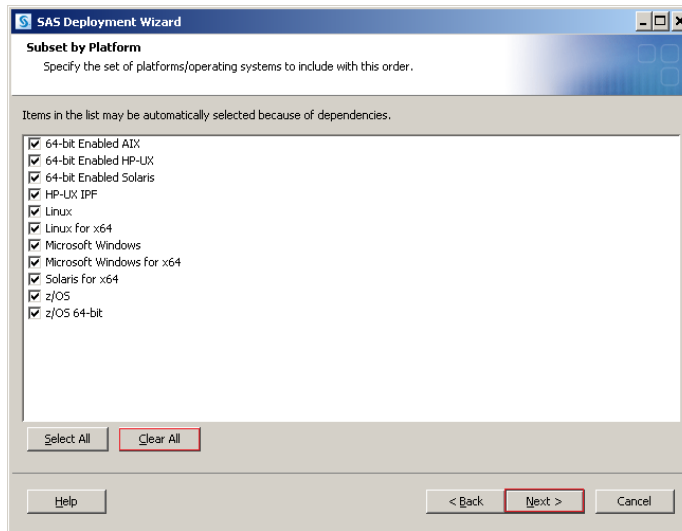
- d. You can enter a description and notes on the **Specify Order Details** page. (This step is optional but recommended.) Click **Next**.



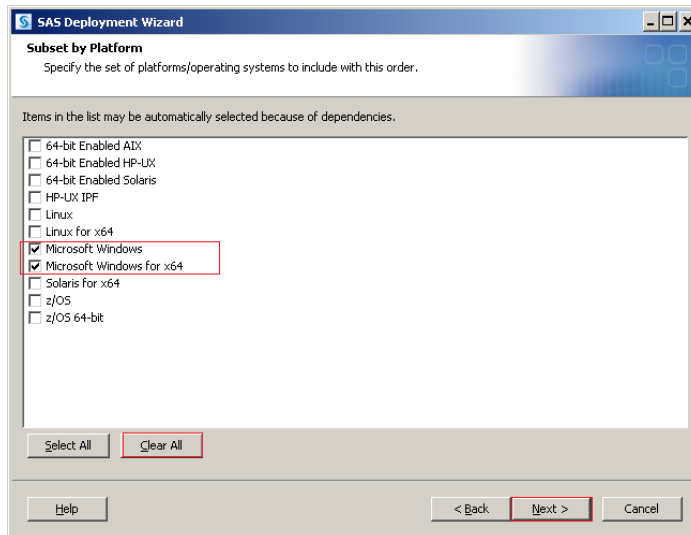
- e. On the **Specify Order Options** page, select **Subset order contents**, **By product platform/operating system**, **By SAS Foundation products**, and **By product languages**. Click **Next**.



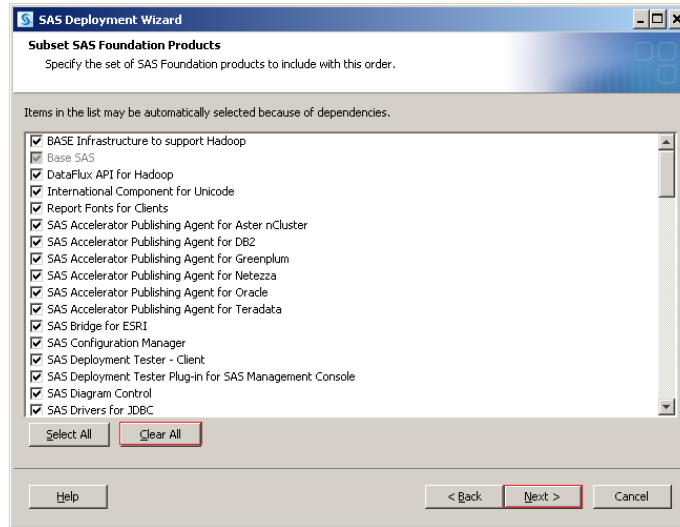
- f. On the **Subset by Platform** page, select **Clear All**.



Next, select **Microsoft Windows for x64** (Microsoft Windows is also selected). Click **Next**.

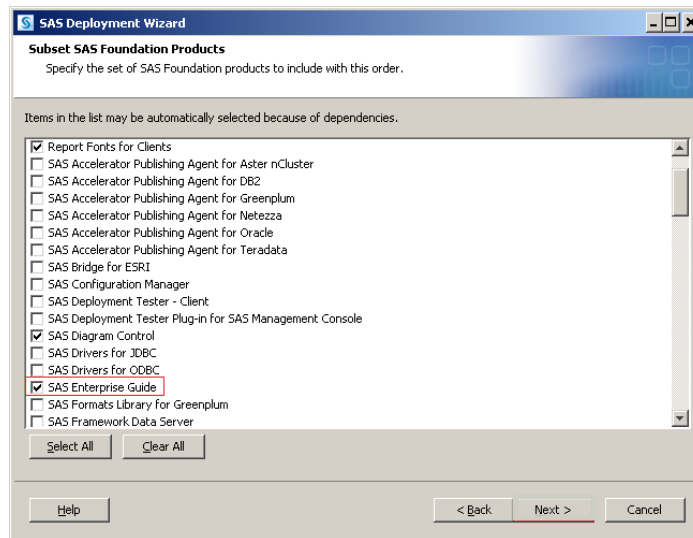


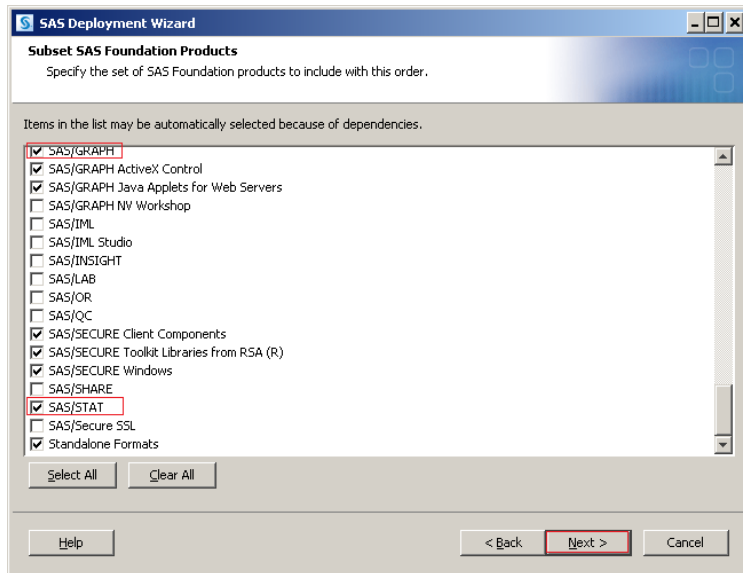
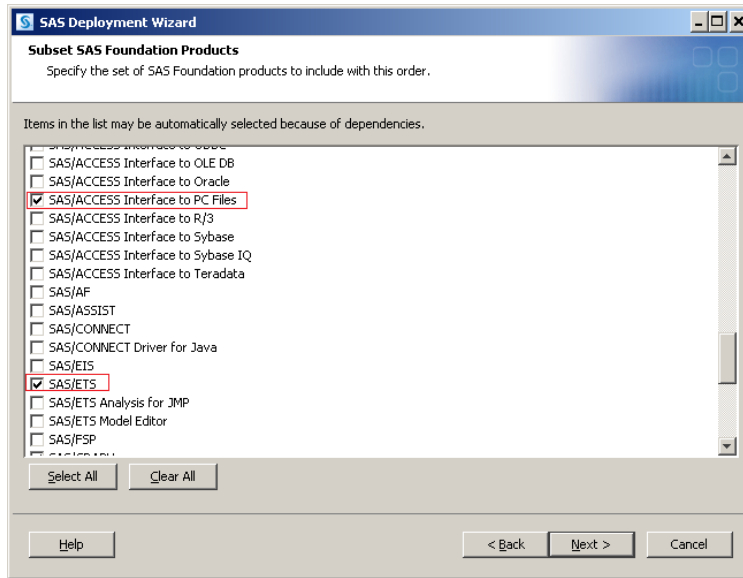
- g. On the **Subset SAS Foundation Products** page, **Base SAS** is selected by default. First, click **Clear All** to clear the defaults.



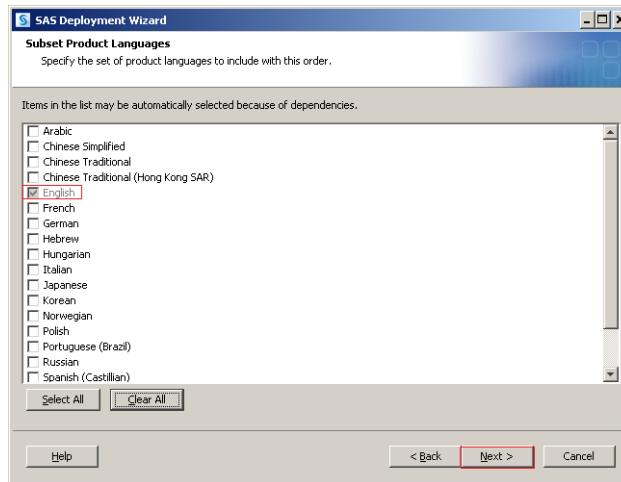
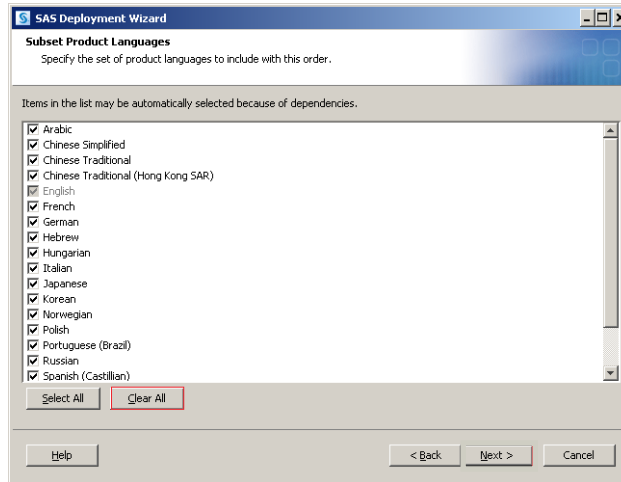
Next, select **SAS Enterprise Guide**, **SAS/ACCESS Interface to PC Files**, **SAS/ETS**, **SAS/GRAPH**, and **SAS/STAT**. Click **Next**.

Note that when you select some products, other products are automatically selected due to dependencies.

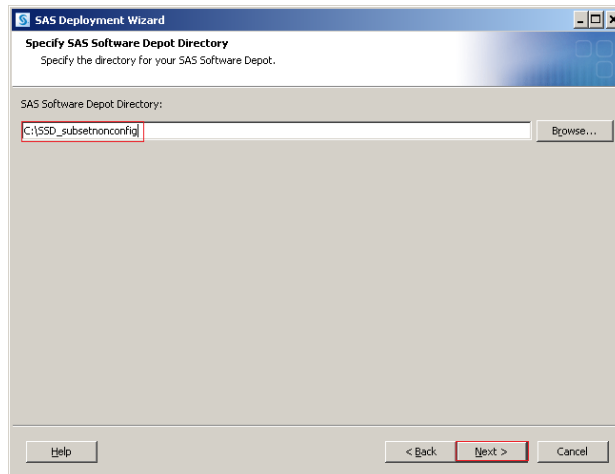




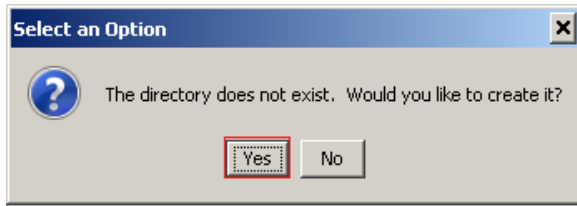
- h. On the **Subset Product Languages** page, select **Clear All**. **English** remains selected by default. Click **Next**.



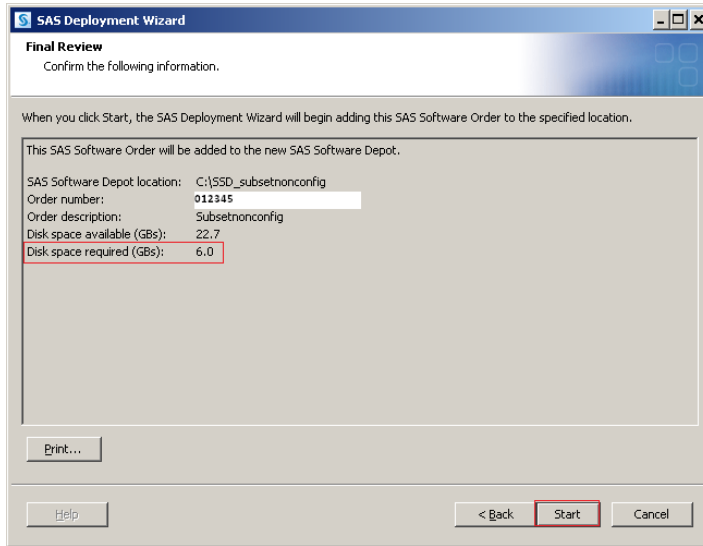
- i. Enter the new SAS software depot directory (for example, **C:\SSD_subsetnonconfig**) and click **Next**.



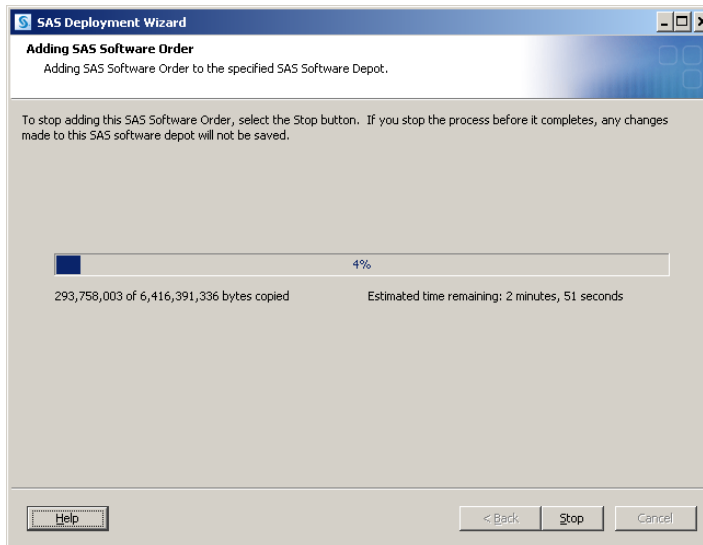
- j. If prompted, click **Yes** to create the new directory.



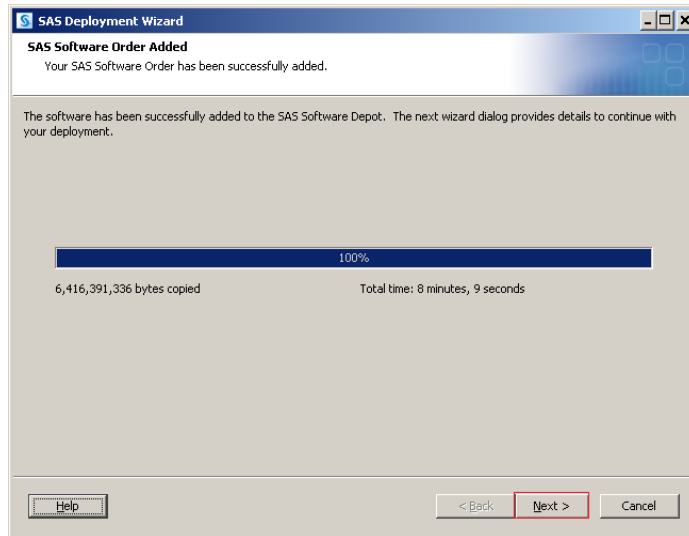
- k. Notice the disk space that is required on the **Final Review** page and click **start**.



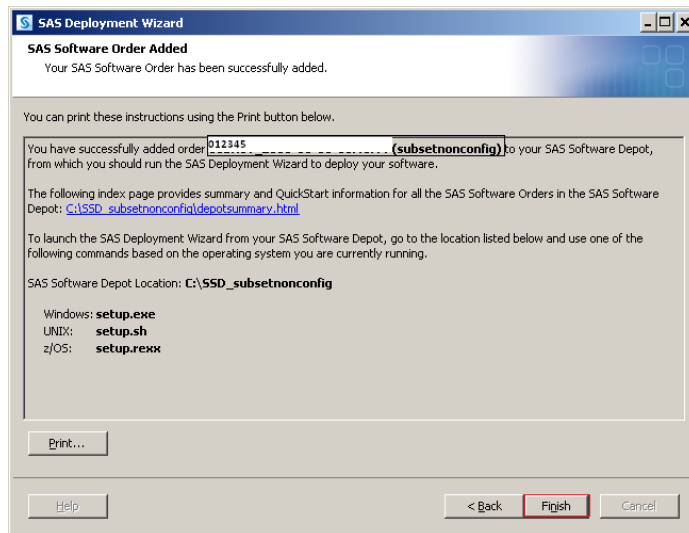
The following page is displayed. Let the process run.



- I. On the **SAS Software Order Added** page, click **Next**.

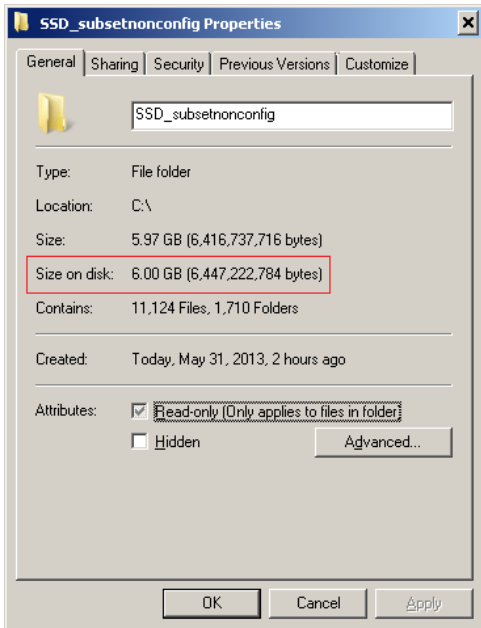


- m. Click **Finish** on the **SAS Software Order Added** page.



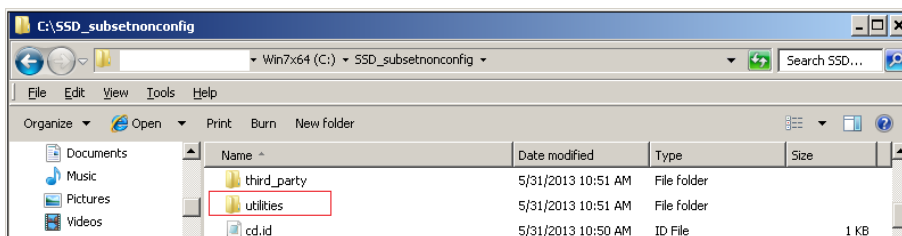
Phase III: Edit the New SAS Software Depot

Open Windows Explorer, select the `x:\SAS-software-depot-name` directory, and right-click **Properties**. The **Size on disk** field shows the amount of disk space that is being used for the smaller SAS software depot that you created in [Phase II](#). (It is 6.0 GB in the example below). However, this size is still too large to burn on a single-sided DVD.

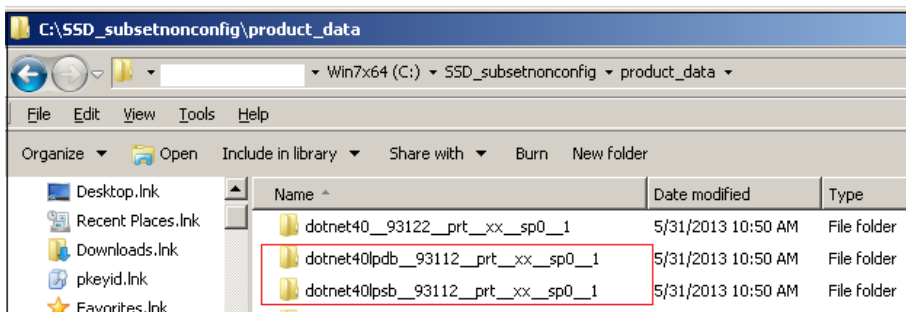


To further reduce the size, start Windows Explorer and delete the following directories:

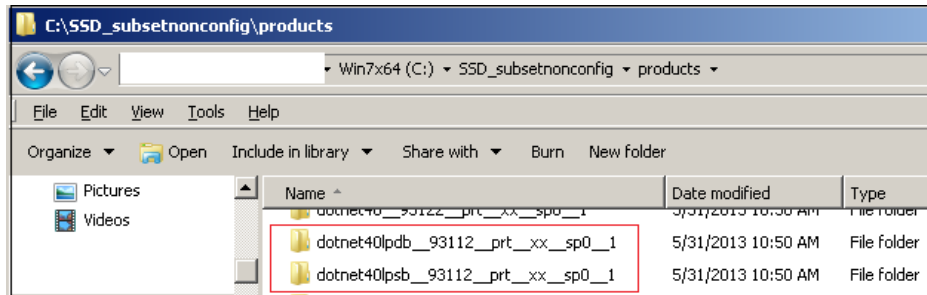
- the `new-depot-location\utilities` directory (for example, `C:\SSD_subsetnonconfig\utilities`)



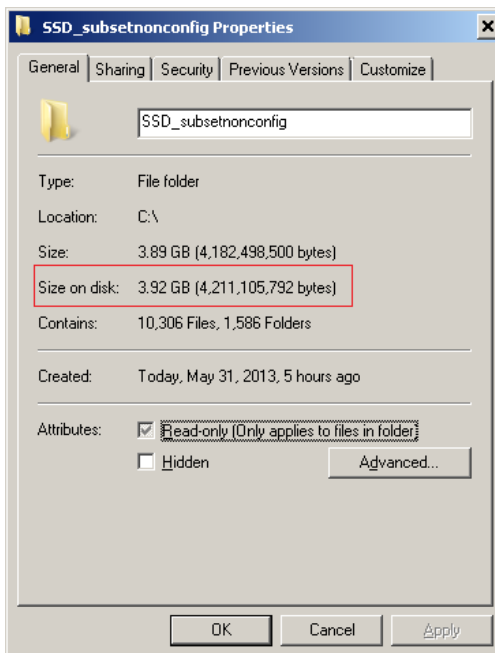
- the `new-depot-location\product_data\dotnet40lp*` directories (for example: `C:\SSD_subsetnonconfig\product_data\dotnet40lp*`)



- the *new-depot-location*\products\dotnet40lp* directories (for example, C:\SSD_subsetnonconfig\products\dotnet40lp*)



Next, open Windows Explorer, select the *x:\SAS-software-depot-name* directory (for example: C:\SSD_subsetnonconfig), and right-click **Properties**. Notice that the size of the depot (3.92 GB in the example below) can now fit on a single-sided DVD.



Phase IV: Create the Physical Media

Burn the remaining contents of the *new-depot-location* to a DVD. You can exclude the top-level directory if you want the SAS Deployment Wizard executable (setup.exe) to be at the root level of the DVD.

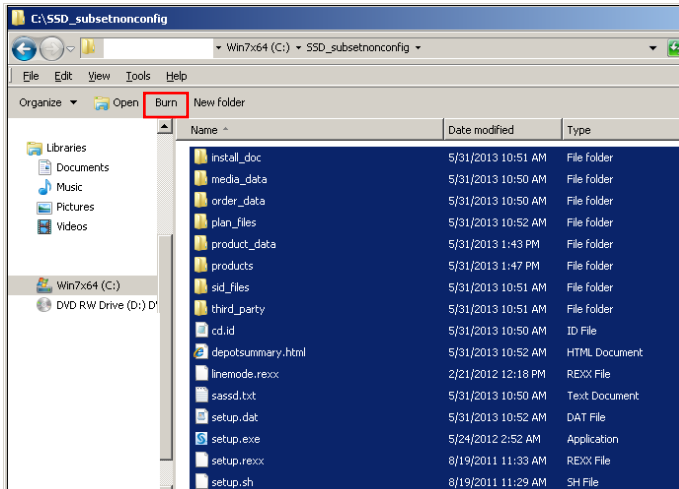
The following instructions are based on using the tools that are available in the Windows 7 operating environment.

There are two processes for creating the physical media using the Windows Explorer tool under Windows 7:

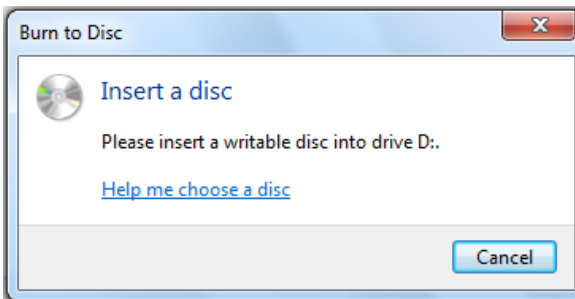
- [Your media needs to be formatted.](#)
- [Your media is already formatted.](#)

Using the Windows Explorer tool for unformatted media

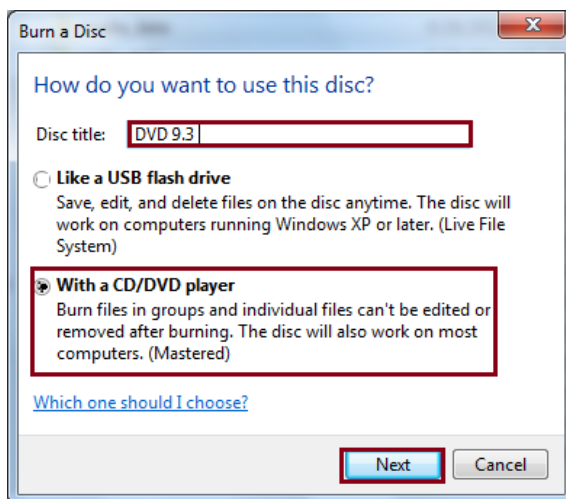
1. Right-click the **Start** button, select **Windows Explorer**, and open the **SAS Software Depot** directory. Next, press **Ctrl+A** to select all of the files and **Ctrl+C** to copy all of the files. Click **Burn** in the upper left corner in Windows Explorer.



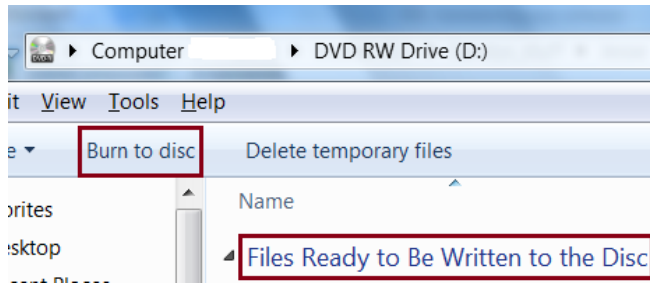
2. You are prompted to insert a disc and the DVD drawer opens on the PC. Insert a blank DVD in the DVD drive.



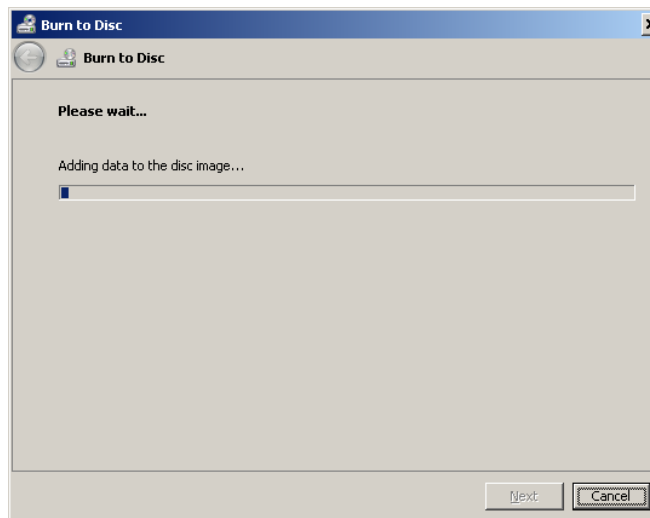
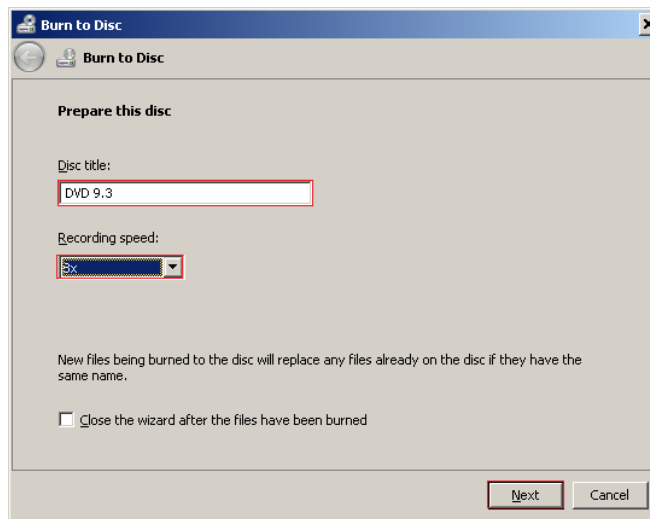
3. In response to **How do you want to use this disc?**, enter a disc title, select **With a CD/DVD player**, and click **Next**.



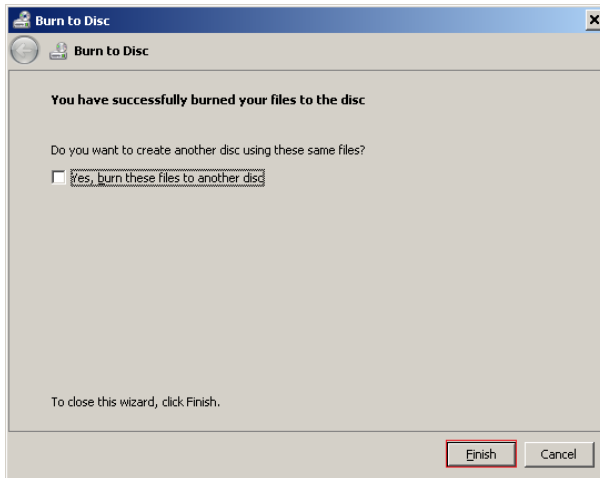
- Windows Explorer opens and **Files Ready to Be Written to Disc** is displayed. Click **Burn to disc**.



- The following dialog boxes are displayed when the disc needs to be prepared (formatted). Click **Next** and wait for the process to finish.

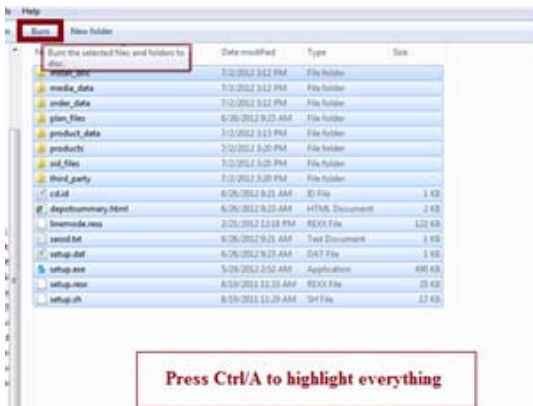


- Click **Finish**. The DVD drawer on your PC opens.

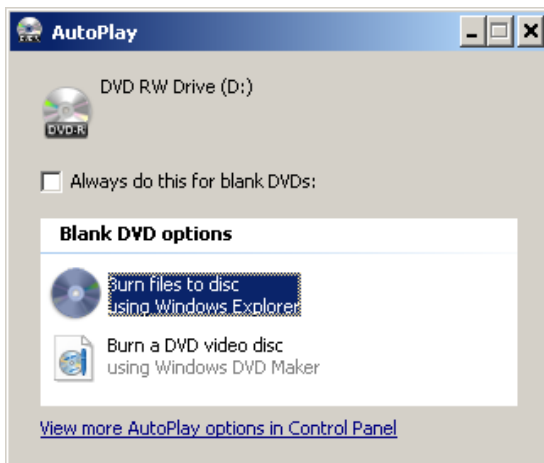


Using the Windows Explorer tool for previously formatted media

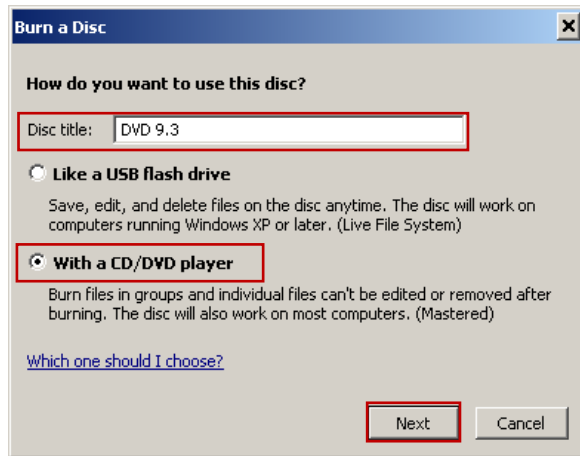
- Right-click the **Start** button, select **Windows Explorer**, and open the **SAS Software Depot** directory. Then press Ctrl+A to highlight all of the files and Ctrl+C to copy all of the files. Click **Burn**.



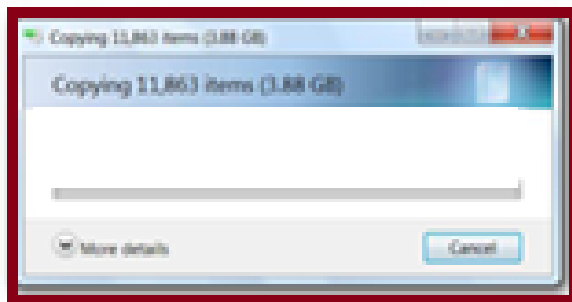
- Insert the DVD in the DVD drive.



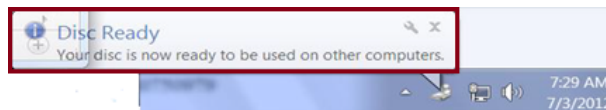
3. Enter the disc title, select **With a CD/DVD Player** (in most cases, select **With a CD/DVD Player** so that the files are not overwritten), and click **Next**.



4. You see the following dialog box during the copy process. Let the copy process complete.



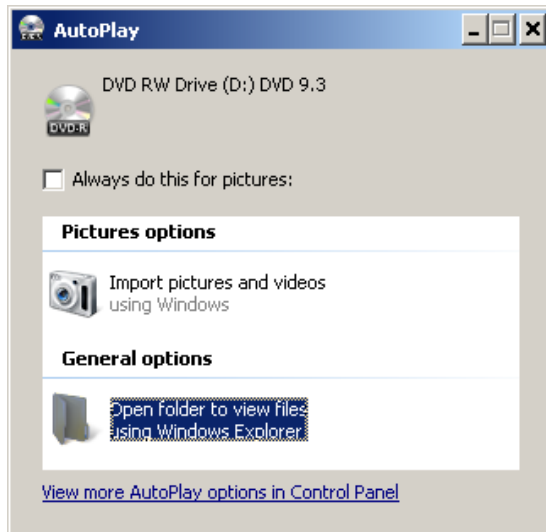
When the disc is finished, the **Disk Ready** box is displayed.



Phase V: Install SAS® from the New DVD

To install SAS from the new DVD on other machines, perform the following steps:

1. Insert the new DVD in the DVD drive. If you are running the AutoPlay option, the following pop-up window appears:



2. If you are not running the AutoPlay option, right-click **Start** and select **Open Windows Explorer**.
3. Under a Windows 7 system, right-click **setup.exe** and select **Run as Administrator**. Under a Windows XP system, double-click **setup.exe**.
4. Complete the installation by following the instructions in the "QuickStart Guide: SAS® 9.3 Installation Kit for Basic Deployments using DVDs: Windows and Windows for x64" (support.sas.com/documentation/installcenter/en/ikqsgbasicmediawin/64911/PDF/default/quickstart_media.pdf).

Troubleshooting

This section provides instructions for resolving errors that you might encounter when you are creating media on a single-sided DVD.

Error: "The following command line arguments are not valid: -subsetnonconfig"

This error occurs when you run the `-subsetnonconfig` command (for example, `x:\SAS Software Depot\setup.exe -subsetnonconfig`).

To resolve this error, follow these steps:

1. Reboot the PC and rerun the command from the command prompt.
2. If you still receive the error, rename the `sdwprefs.txt` file to `sdwprefs.old`. This file is located in either of the following directories:

```
C:\Documents and Settings\userID-that-performed-installation\Local  
Settings\Application Data\SAS\SASDeploymentWizard\
```

```
C:\Users\userID-that-performed-installation\AppData\Local\SAS\  
SASDeploymentWizard\
```

3. Enter the `-subsetnonconfig` command instead of cutting and pasting it. Sometimes the hyphen (-) does not translate correctly.
4. If the problem still exists, try running these steps from another PC.

Error: "The SAS Deployment Wizard cannot be invoked while the SAS Deployment Wizard is running"

This error occurs when you launch the installation.

To resolve this error, follow these steps:

1. Start the Task Manager. Right-click on an empty area on the taskbar and then select **Task Manager**. Alternatively, you can press `Ctrl+Shift+Esc` and select **Start Task Manager**.
2. Click the **Processes** tab.
3. Click **Image Name** twice to sort the names, select `deploywiz.exe`, and select **End Process**.

SAS and all other SAS Institute Inc. product or service names are registered trademarks or trademarks of SAS Institute Inc. in the USA and other countries. ® indicates USA registration. Other brand and product names are trademarks of their respective companies. Copyright © 2013 SAS Institute Inc., Cary, NC, USA. All rights reserved.

Released: June 13, 2013