

The REG Procedure
 Model: MODEL1
 Dependent Variable: Invoice

VarName=EngineSize

| | |
|-----------------------------|-----|
| Number of Observations Read | 428 |
| Number of Observations Used | 428 |

| Analysis of Variance | | | | | |
|----------------------|-----|----------------|-------------|---------|--------|
| Source | DF | Sum of Squares | Mean Square | F Value | Pr > F |
| Model | 1 | 42350065762 | 42350065762 | 199.24 | <.0001 |
| Error | 426 | 90551258329 | 212561639 | | |
| Corrected Total | 427 | 1.329013E11 | | | |

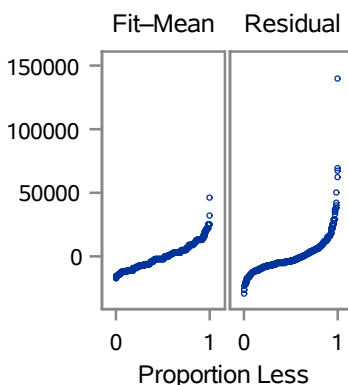
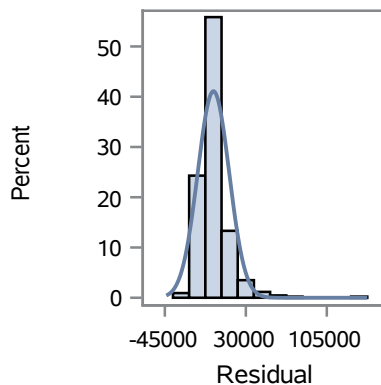
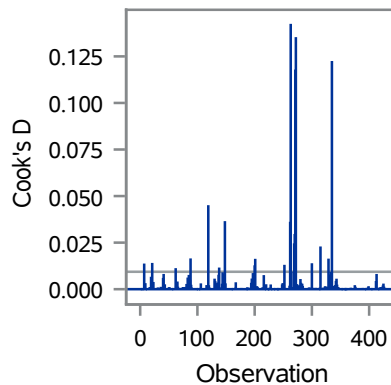
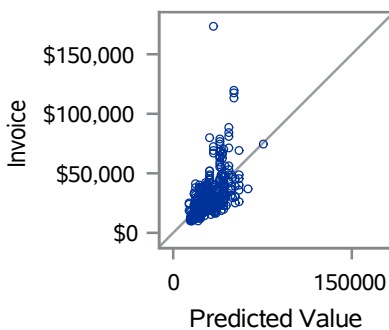
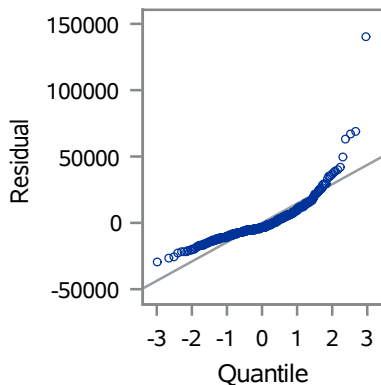
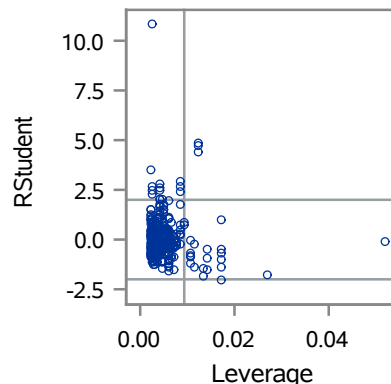
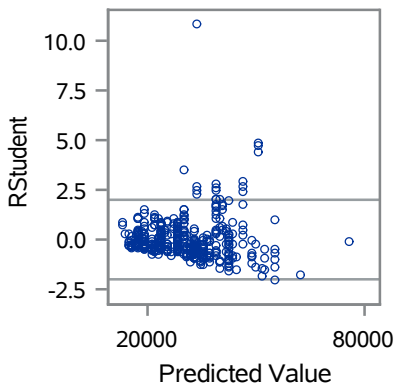
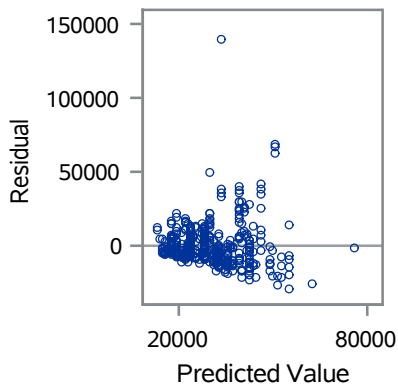
| | | | |
|----------------|----------|----------|--------|
| Root MSE | 14579 | R-Square | 0.3187 |
| Dependent Mean | 30015 | Adj R-Sq | 0.3171 |
| Coeff Var | 48.57451 | | |

| Parameter Estimates | | | | | |
|---------------------|----|--------------------|----------------|---------|---------|
| Variable | DF | Parameter Estimate | Standard Error | t Value | Pr > t |
| Intercept | 1 | 1297.23471 | 2153.11461 | 0.60 | 0.5472 |
| Value | 1 | 8983.39098 | 636.43741 | 14.12 | <.0001 |

The REG Procedure
Model: MODEL1
Dependent Variable: Invoice

VarName=EngineSize

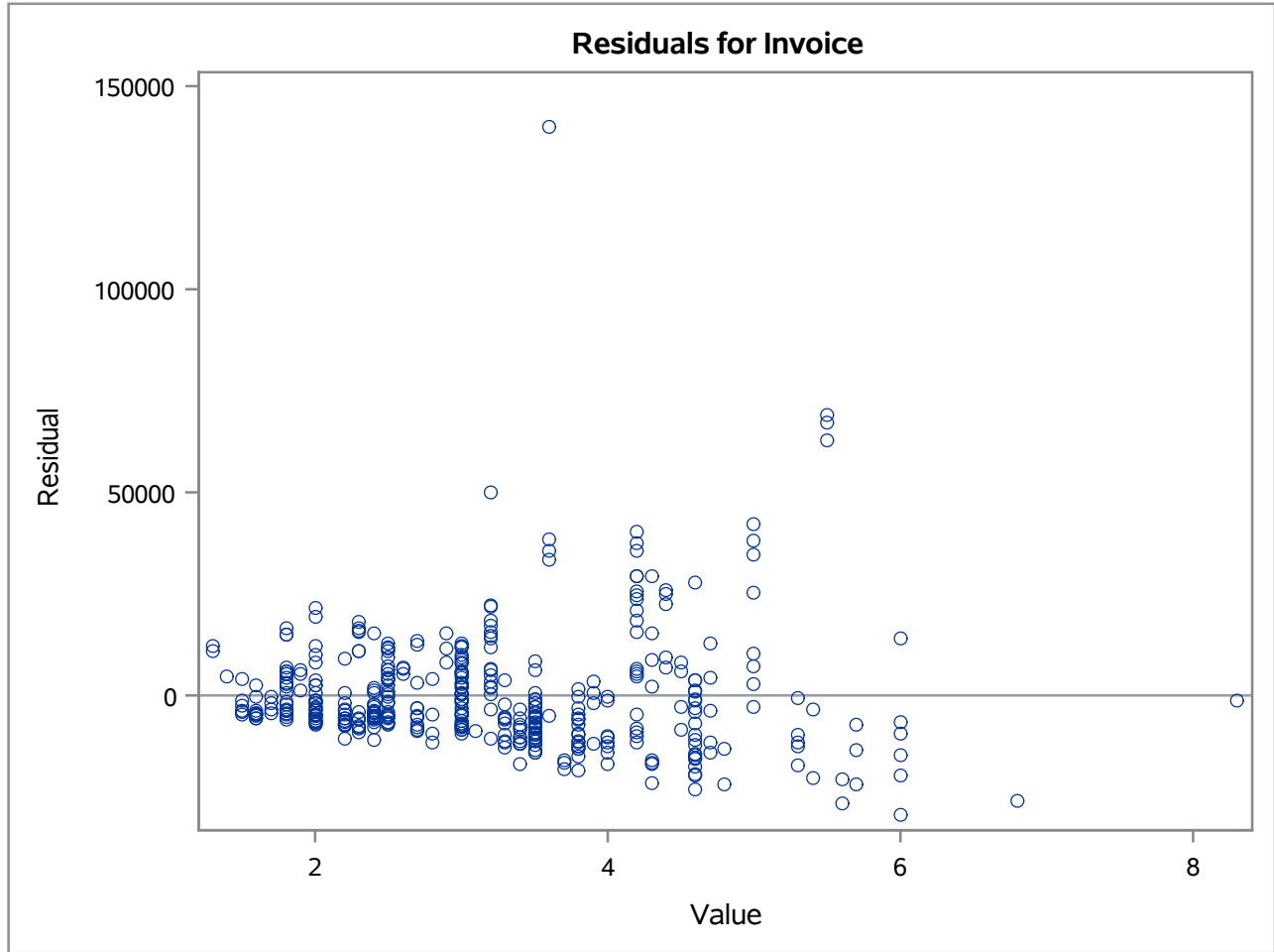
Fit Diagnostics for Invoice



| | |
|--------------|--------|
| Observations | 428 |
| Parameters | 2 |
| Error DF | 426 |
| MSE | 2.13E8 |
| R-Square | 0.3187 |
| Adj R-Square | 0.3171 |

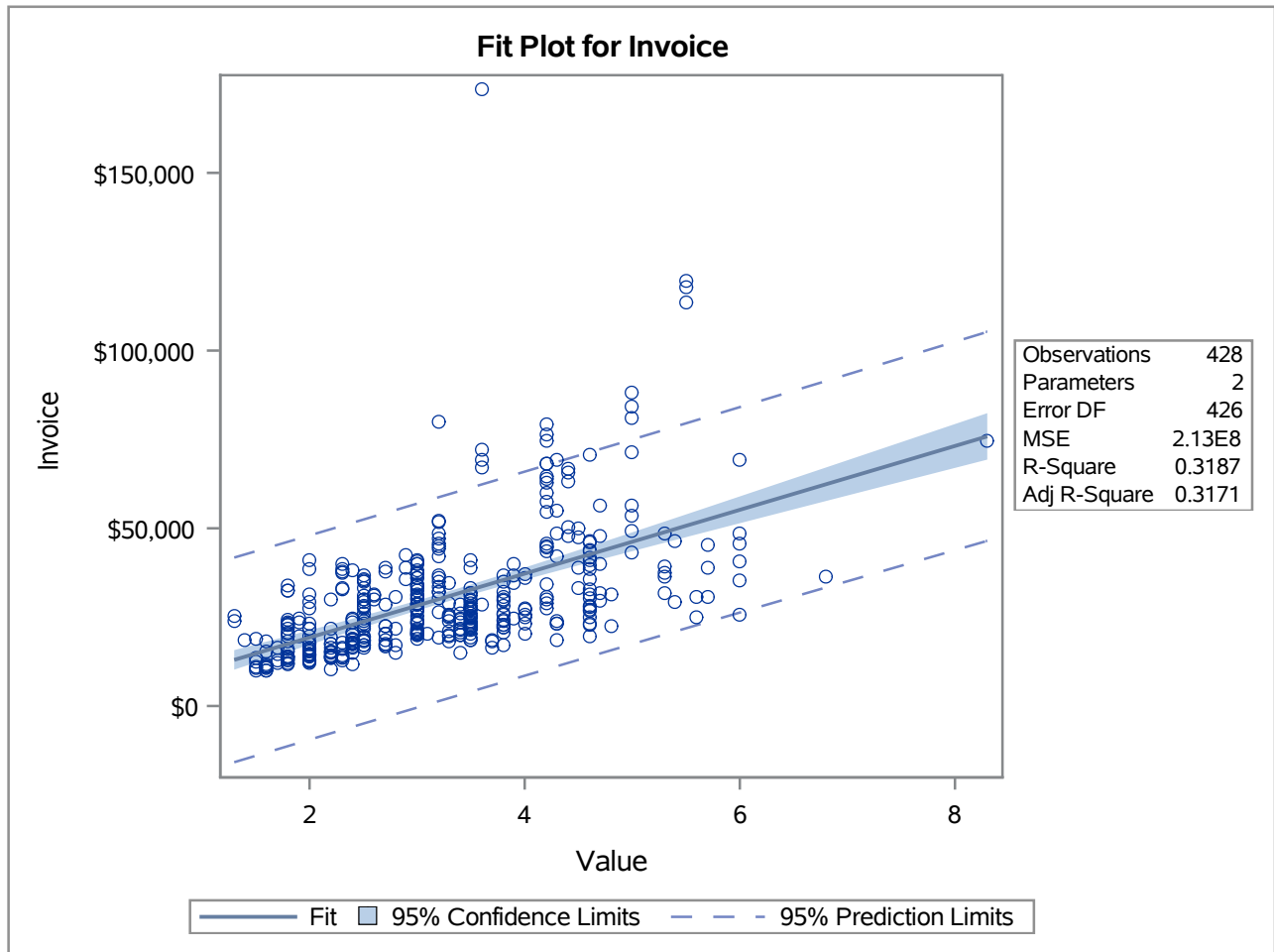
The REG Procedure
Model: MODEL1
Dependent Variable: Invoice

VarName=EngineSize



The REG Procedure
Model: MODEL1
Dependent Variable: Invoice

VarName=EngineSize



The REG Procedure
 Model: MODEL1
 Dependent Variable: Invoice

VarName=Horsepower

| | |
|-----------------------------|-----|
| Number of Observations Read | 428 |
| Number of Observations Used | 428 |

| Analysis of Variance | | | | | |
|----------------------|-----|----------------|-------------|---------|--------|
| Source | DF | Sum of Squares | Mean Square | F Value | Pr > F |
| Model | 1 | 90181295769 | 90181295769 | 899.28 | <.0001 |
| Error | 426 | 42720028323 | 100281757 | | |
| Corrected Total | 427 | 1.329013E11 | | | |

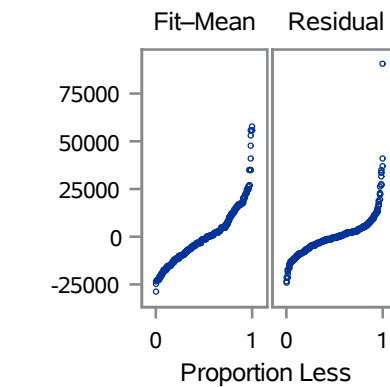
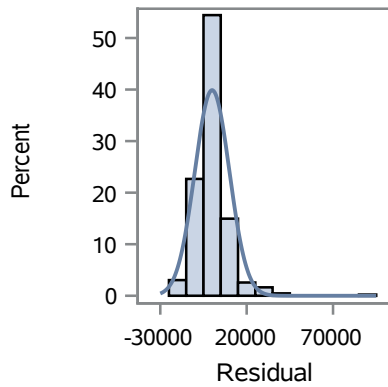
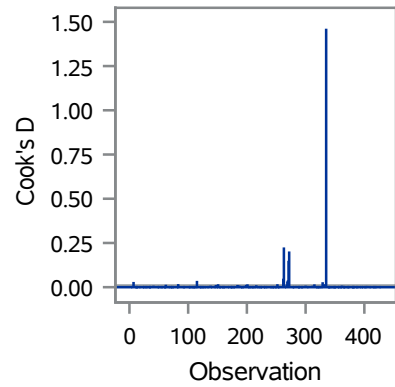
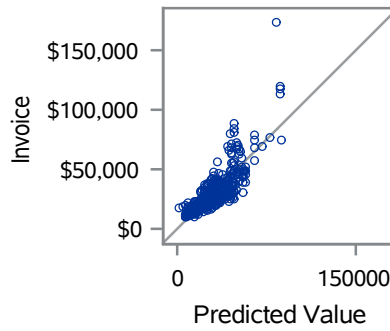
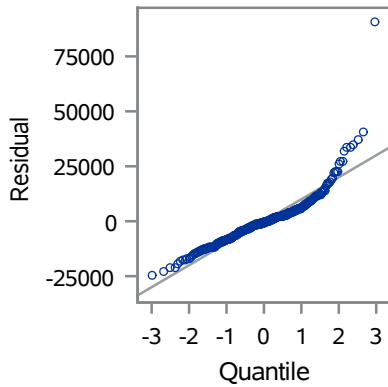
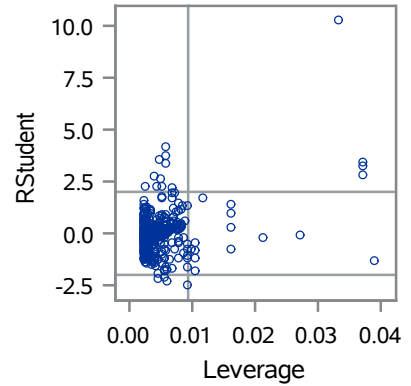
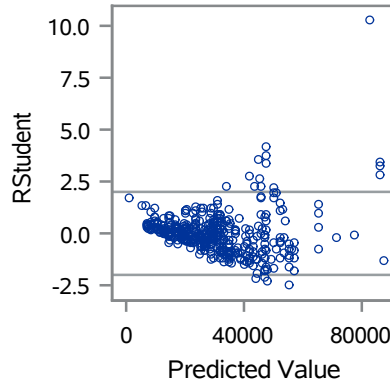
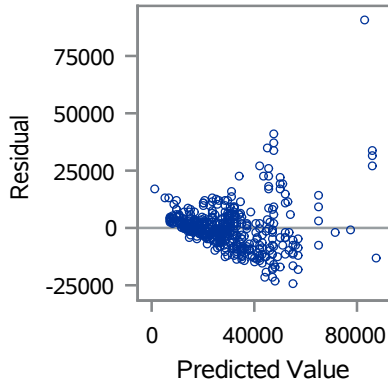
| | | | |
|----------------|----------|----------|--------|
| Root MSE | 10014 | R-Square | 0.6786 |
| Dependent Mean | 30015 | Adj R-Sq | 0.6778 |
| Coeff Var | 33.36391 | | |

| Parameter Estimates | | | | | |
|---------------------|----|--------------------|----------------|---------|---------|
| Variable | DF | Parameter Estimate | Standard Error | t Value | Pr > t |
| Intercept | 1 | -13660 | 1534.72473 | -8.90 | <.0001 |
| Value | 1 | 202.30283 | 6.74613 | 29.99 | <.0001 |

The REG Procedure
Model: MODEL1
Dependent Variable: Invoice

VarName=Horsepower

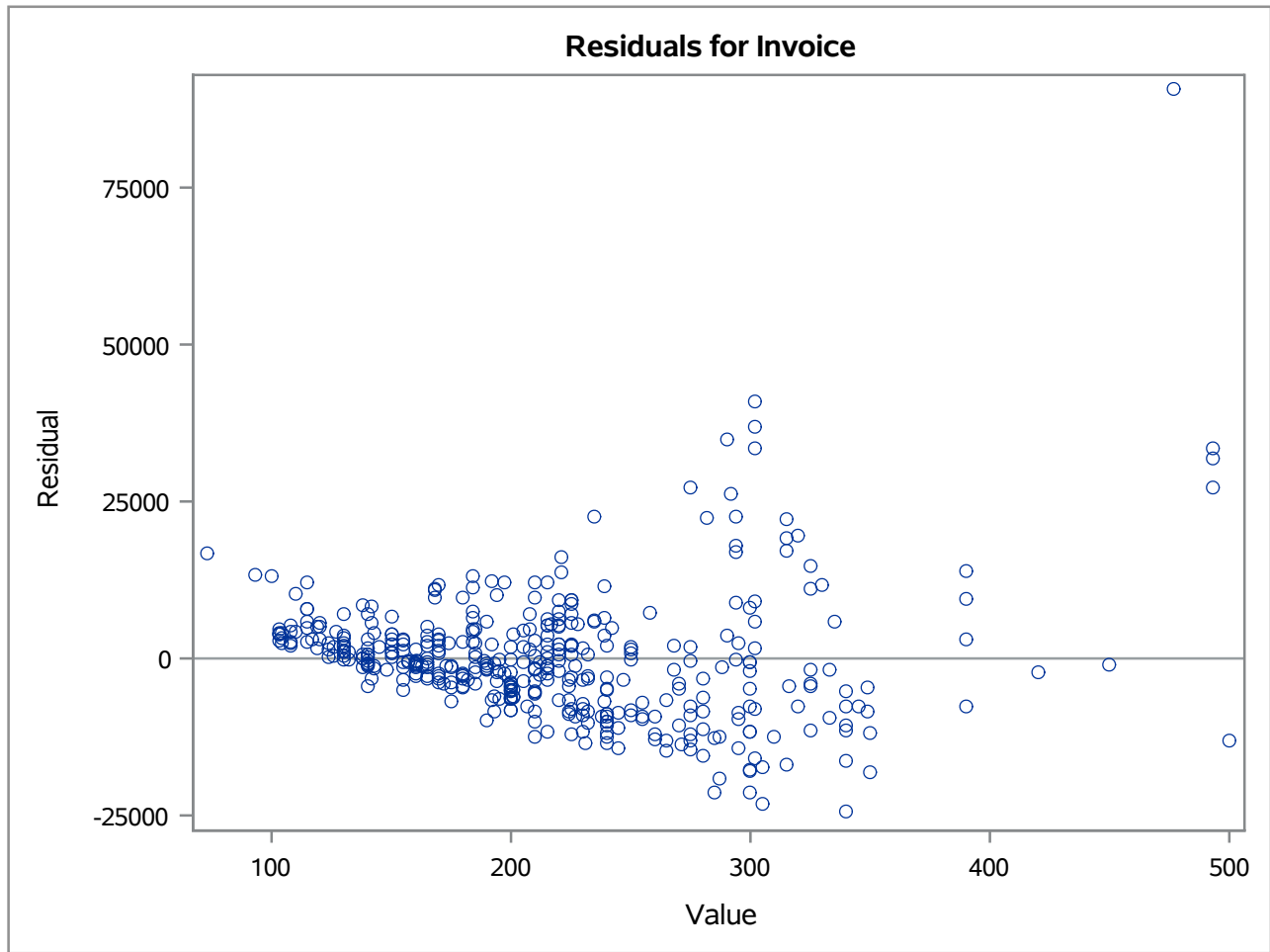
Fit Diagnostics for Invoice



| | |
|--------------|--------|
| Observations | 428 |
| Parameters | 2 |
| Error DF | 426 |
| MSE | 1E8 |
| R-Square | 0.6786 |
| Adj R-Square | 0.6778 |

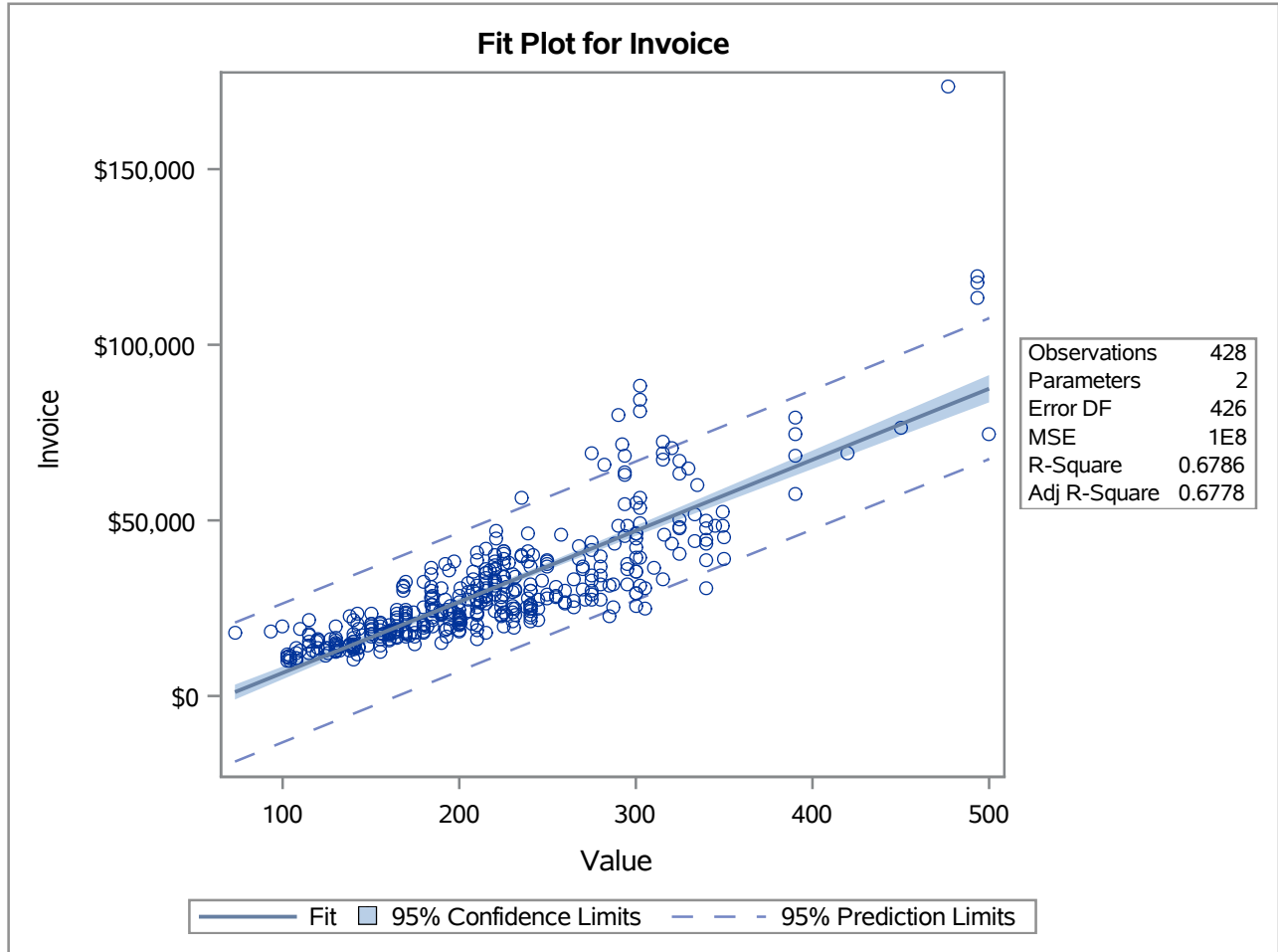
The REG Procedure
Model: MODEL1
Dependent Variable: Invoice

VarName=Horsepower



The REG Procedure
Model: MODEL1
Dependent Variable: Invoice

VarName=Horsepower



The REG Procedure
 Model: MODEL1
 Dependent Variable: Invoice

VarName=MSRP

| | |
|-----------------------------|-----|
| Number of Observations Read | 428 |
| Number of Observations Used | 428 |

| Analysis of Variance | | | | | |
|----------------------|-----|----------------|-------------|---------|--------|
| Source | DF | Sum of Squares | Mean Square | F Value | Pr > F |
| Model | 1 | 1.326706E11 | 1.326706E11 | 244965 | <.0001 |
| Error | 426 | 230717318 | 541590 | | |
| Corrected Total | 427 | 1.329013E11 | | | |

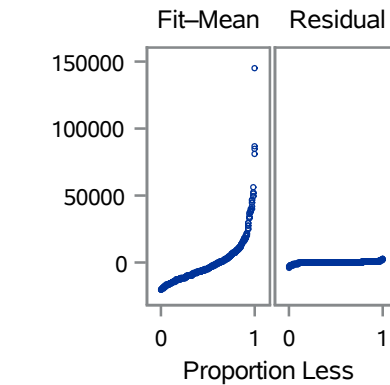
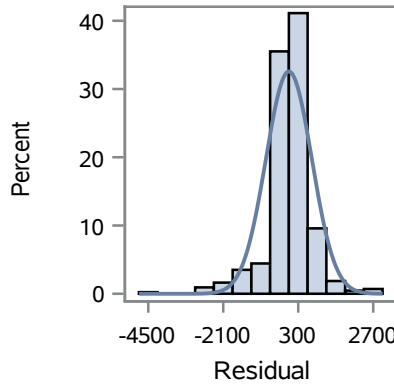
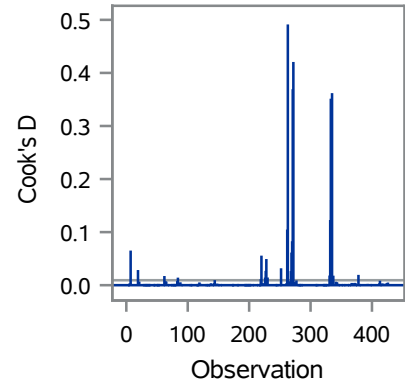
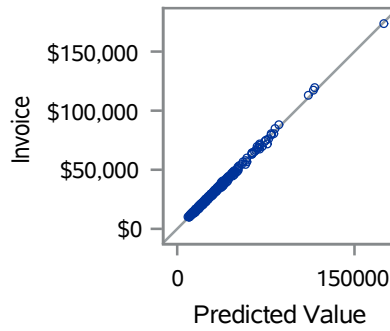
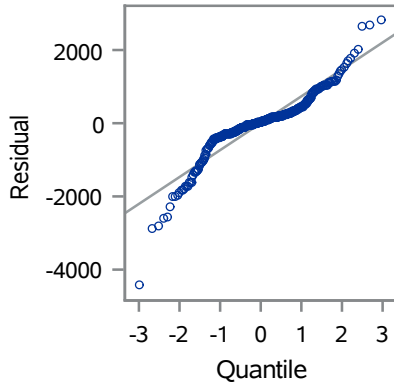
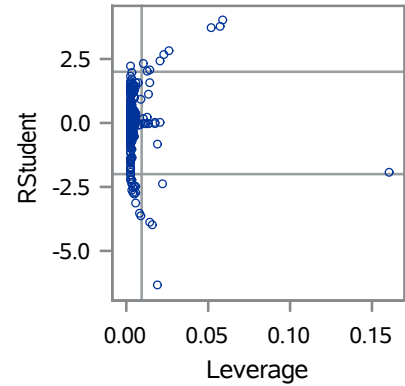
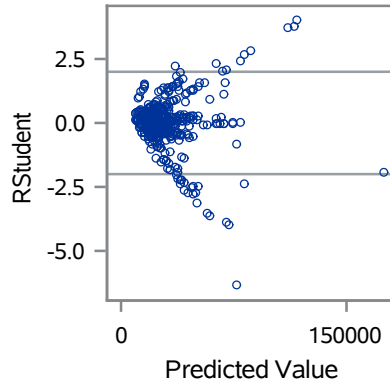
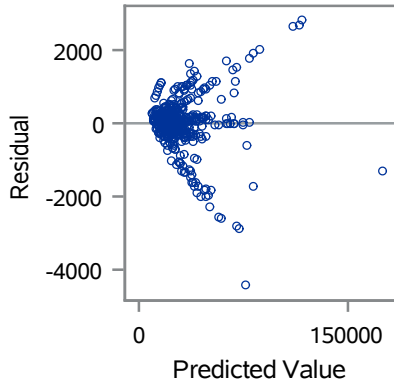
| | | | |
|----------------|-----------|----------|--------|
| Root MSE | 735.92795 | R-Square | 0.9983 |
| Dependent Mean | 30015 | Adj R-Sq | 0.9983 |
| Coeff Var | 2.45189 | | |

| Parameter Estimates | | | | | |
|---------------------|----|--------------------|----------------|---------|---------|
| Variable | DF | Parameter Estimate | Standard Error | t Value | Pr > t |
| Intercept | 1 | 284.14491 | 69.81183 | 4.07 | <.0001 |
| Value | 1 | 0.90711 | 0.00183 | 494.94 | <.0001 |

The REG Procedure
Model: MODEL1
Dependent Variable: Invoice

VarName=MSRP

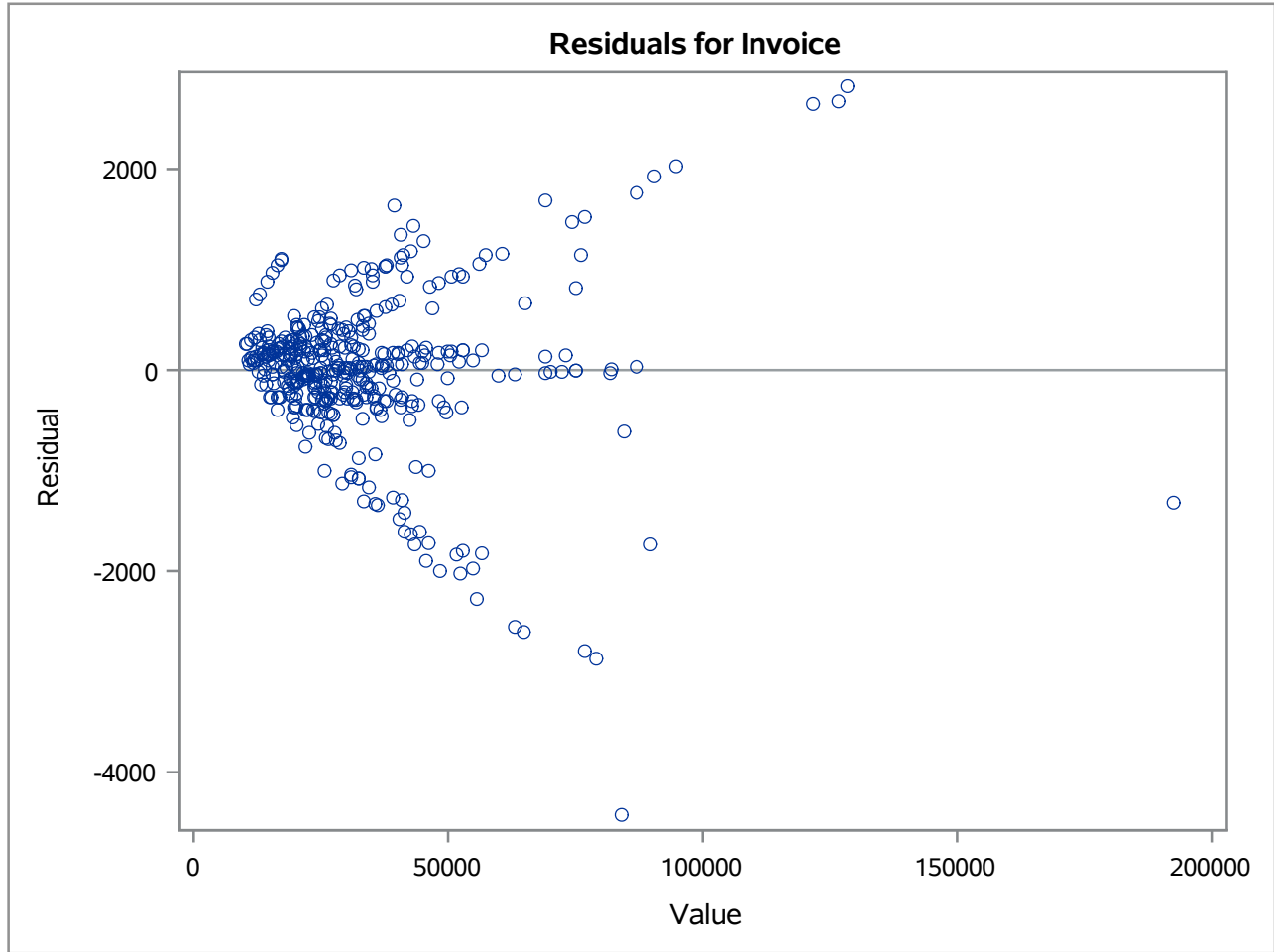
Fit Diagnostics for Invoice



| | |
|--------------|--------|
| Observations | 428 |
| Parameters | 2 |
| Error DF | 426 |
| MSE | 541590 |
| R-Square | 0.9983 |
| Adj R-Square | 0.9983 |

The REG Procedure
Model: MODEL1
Dependent Variable: Invoice

VarName=MSRP



The REG Procedure
Model: MODEL1
Dependent Variable: Invoice

VarName=MSRP

