

The CONTENTS Procedure

Data Set Name	WORK.AMNA	Observations	359
Member Type	DATA	Variables	13
Engine	V9	Indexes	0
Created	09/30/2019 14:42:20	Observation Length	240
Last Modified	09/30/2019 14:42:20	Deleted Observations	0
Protection		Compressed	NO
Data Set Type		Sorted	NO
Label			
Data Representation	SOLARIS_X86_64, LINUX_X86_64, ALPHA_TRU64, LINUX_IA64		
Encoding	utf-8 Unicode (UTF-8)		

Engine/Host Dependent Information	
Data Set Page Size	65536
Number of Data Set Pages	2
First Data Page	1
Max Obs per Page	272
Obs in First Data Page	257
Number of Data Set Repairs	0
Filename	/tmp/SAS_work52A400005EA5_localhost.localdomain/SAS_work0A3100005EA5_localhost.localdomain/amna.sas7bdat
Release Created	9.0401M6
Host Created	Linux
Inode Number	526727
Access Permission	rw-rw-r--
Owner Name	sasdemo
File Size	192KB
File Size (bytes)	196608

Alphabetic List of Variables and Attributes						
#	Variable	Type	Len	Format	Informat	Label
2	CPEid	Char	25	\$25.	\$25.	CPEid
11	ClinIsoDt	Num	8	DATE7.		ClinIsoDt
1	Code	Num	8	BEST.		Code
3	DOCDt	Num	8	DATE9.		DOCDt
8	Date_moved_out	Num	8	DATE9.		Date moved out
5	DeathDt	Num	8	DATE9.		DeathDt
6	DeathDtCode	Num	8	BEST.		DeathDtCode
13	HOSPITAL	Char	69	\$69.	\$69.	HOSPITAL
4	LastChartDt	Num	8	DATE9.		LastChartDt

The CONTENTS Procedure

Alphabetic List of Variables and Attributes						
#	Variable	Type	Len	Format	Informat	Label
9	MRN	Char	35	\$35.	\$35.	MRN
7	Moved	Num	8	BEST.		Moved
10	SPECIMEN	Char	36	\$36.	\$36.	SPECIMEN
12	SpecimenDt	Num	8	DATE7.		SpecimenDt

The FREQ Procedure

Code				
Code	Frequency	Percent	Cumulative Frequency	Cumulative Percent
0	332	92.48	332	92.48
1	27	7.52	359	100.00

The FREQ Procedure

SpecimenDt				
SpecimenDt	Frequency	Percent	Cumulative Frequency	Cumulative Percent
06FEB09	1	0.28	1	0.28
09JUN10	1	0.28	2	0.56
23OCT10	1	0.28	3	0.84
06DEC10	1	0.28	4	1.11
13APR11	1	0.28	5	1.39
23APR11	1	0.28	6	1.67
26APR11	1	0.28	7	1.95
28APR11	1	0.28	8	2.23
11MAY11	1	0.28	9	2.51
23MAY11	1	0.28	10	2.79
05JUL11	1	0.28	11	3.06
19AUG11	1	0.28	12	3.34
25AUG11	1	0.28	13	3.62
07SEP11	1	0.28	14	3.90
19SEP11	1	0.28	15	4.18
26SEP11	1	0.28	16	4.46
03OCT11	1	0.28	17	4.74
19OCT11	1	0.28	18	5.01
26OCT11	1	0.28	19	5.29
23NOV11	1	0.28	20	5.57
01MAR12	1	0.28	21	5.85
26APR12	1	0.28	22	6.13
15MAY12	1	0.28	23	6.41
18MAY12	1	0.28	24	6.69
05JUN12	1	0.28	25	6.96
12JUN12	1	0.28	26	7.24
22JUN12	1	0.28	27	7.52
14JUL12	1	0.28	28	7.80
21JUL12	1	0.28	29	8.08
23JUL12	1	0.28	30	8.36
30JUL12	1	0.28	31	8.64
09AUG12	1	0.28	32	8.91
22AUG12	1	0.28	33	9.19
01SEP12	1	0.28	34	9.47
11SEP12	1	0.28	35	9.75

The FREQ Procedure

SpecimenDt				
SpecimenDt	Frequency	Percent	Cumulative Frequency	Cumulative Percent
15SEP12	1	0.28	36	10.03
18SEP12	2	0.56	38	10.58
16OCT12	1	0.28	39	10.86
29OCT12	2	0.56	41	11.42
12NOV12	1	0.28	42	11.70
22DEC12	1	0.28	43	11.98
28DEC12	1	0.28	44	12.26
29JAN13	1	0.28	45	12.53
31JAN13	1	0.28	46	12.81
08FEB13	1	0.28	47	13.09
11FEB13	1	0.28	48	13.37
03MAR13	1	0.28	49	13.65
12MAR13	1	0.28	50	13.93
20MAR13	1	0.28	51	14.21
30MAR13	1	0.28	52	14.48
08APR13	1	0.28	53	14.76
25APR13	1	0.28	54	15.04
06MAY13	1	0.28	55	15.32
14JUN13	1	0.28	56	15.60
22JUN13	1	0.28	57	15.88
13JUL13	1	0.28	58	16.16
28JUL13	1	0.28	59	16.43
22SEP13	1	0.28	60	16.71
01OCT13	1	0.28	61	16.99
19OCT13	1	0.28	62	17.27
14NOV13	1	0.28	63	17.55
08DEC13	1	0.28	64	17.83
09DEC13	1	0.28	65	18.11
17DEC13	1	0.28	66	18.38
30JAN14	2	0.56	68	18.94
04FEB14	1	0.28	69	19.22
13FEB14	1	0.28	70	19.50
25FEB14	1	0.28	71	19.78
03MAR14	1	0.28	72	20.06
10MAR14	2	0.56	74	20.61

The FREQ Procedure

SpecimenDt				
SpecimenDt	Frequency	Percent	Cumulative Frequency	Cumulative Percent
20MAR14	1	0.28	75	20.89
23MAR14	1	0.28	76	21.17
07APR14	1	0.28	77	21.45
15APR14	1	0.28	78	21.73
05MAY14	2	0.56	80	22.28
12JUN14	1	0.28	81	22.56
07JUL14	1	0.28	82	22.84
15JUL14	2	0.56	84	23.40
16JUL14	1	0.28	85	23.68
18JUL14	1	0.28	86	23.96
28JUL14	1	0.28	87	24.23
08SEP14	1	0.28	88	24.51
23SEP14	1	0.28	89	24.79
26SEP14	1	0.28	90	25.07
30SEP14	1	0.28	91	25.35
06OCT14	1	0.28	92	25.63
11OCT14	1	0.28	93	25.91
29OCT14	1	0.28	94	26.18
31OCT14	1	0.28	95	26.46
15JAN15	1	0.28	96	26.74
20JAN15	2	0.56	98	27.30
17FEB15	1	0.28	99	27.58
18FEB15	1	0.28	100	27.86
07APR15	1	0.28	101	28.13
23APR15	1	0.28	102	28.41
02JUN15	1	0.28	103	28.69
04JUN15	2	0.56	105	29.25
06JUN15	1	0.28	106	29.53
08JUN15	2	0.56	108	30.08
11JUN15	2	0.56	110	30.64
15JUN15	1	0.28	111	30.92
20JUN15	1	0.28	112	31.20
25JUN15	1	0.28	113	31.48
03JUL15	1	0.28	114	31.75
06JUL15	1	0.28	115	32.03

The FREQ Procedure

SpecimenDt				
SpecimenDt	Frequency	Percent	Cumulative Frequency	Cumulative Percent
11JUL15	1	0.28	116	32.31
17JUL15	1	0.28	117	32.59
03AUG15	1	0.28	118	32.87
17AUG15	1	0.28	119	33.15
20AUG15	1	0.28	120	33.43
02SEP15	1	0.28	121	33.70
28SEP15	1	0.28	122	33.98
16OCT15	1	0.28	123	34.26
26NOV15	1	0.28	124	34.54
01DEC15	1	0.28	125	34.82
06DEC15	1	0.28	126	35.10
14DEC15	1	0.28	127	35.38
16DEC15	1	0.28	128	35.65
18JAN16	2	0.56	130	36.21
25JAN16	1	0.28	131	36.49
31JAN16	1	0.28	132	36.77
05FEB16	1	0.28	133	37.05
10FEB16	1	0.28	134	37.33
17FEB16	1	0.28	135	37.60
18FEB16	1	0.28	136	37.88
21FEB16	1	0.28	137	38.16
29FEB16	1	0.28	138	38.44
07MAR16	1	0.28	139	38.72
15MAR16	1	0.28	140	39.00
21MAR16	1	0.28	141	39.28
22MAR16	2	0.56	143	39.83
24MAR16	2	0.56	145	40.39
27MAR16	1	0.28	146	40.67
30MAR16	1	0.28	147	40.95
01APR16	1	0.28	148	41.23
06APR16	1	0.28	149	41.50
11APR16	2	0.56	151	42.06
12APR16	1	0.28	152	42.34
15APR16	1	0.28	153	42.62
17APR16	1	0.28	154	42.90

The FREQ Procedure

SpecimenDt				
SpecimenDt	Frequency	Percent	Cumulative Frequency	Cumulative Percent
19APR16	2	0.56	156	43.45
02MAY16	1	0.28	157	43.73
03MAY16	1	0.28	158	44.01
09MAY16	1	0.28	159	44.29
26MAY16	2	0.56	161	44.85
06JUN16	1	0.28	162	45.13
12JUN16	1	0.28	163	45.40
13JUN16	1	0.28	164	45.68
27JUN16	2	0.56	166	46.24
06JUL16	1	0.28	167	46.52
18JUL16	1	0.28	168	46.80
19JUL16	1	0.28	169	47.08
22JUL16	1	0.28	170	47.35
28JUL16	1	0.28	171	47.63
30JUL16	1	0.28	172	47.91
02AUG16	1	0.28	173	48.19
08AUG16	1	0.28	174	48.47
09AUG16	1	0.28	175	48.75
29AUG16	1	0.28	176	49.03
08SEP16	1	0.28	177	49.30
12SEP16	1	0.28	178	49.58
13SEP16	1	0.28	179	49.86
20SEP16	1	0.28	180	50.14
22SEP16	2	0.56	182	50.70
27SEP16	1	0.28	183	50.97
11OCT16	2	0.56	185	51.53
18OCT16	1	0.28	186	51.81
29OCT16	1	0.28	187	52.09
03NOV16	1	0.28	188	52.37
07NOV16	2	0.56	190	52.92
08NOV16	1	0.28	191	53.20
15NOV16	2	0.56	193	53.76
29NOV16	1	0.28	194	54.04
05DEC16	2	0.56	196	54.60
21DEC16	1	0.28	197	54.87

The FREQ Procedure

SpecimenDt				
SpecimenDt	Frequency	Percent	Cumulative Frequency	Cumulative Percent
22DEC16	1	0.28	198	55.15
08JAN17	1	0.28	199	55.43
08FEB17	1	0.28	200	55.71
13FEB17	1	0.28	201	55.99
14FEB17	2	0.56	203	56.55
16FEB17	1	0.28	204	56.82
21FEB17	1	0.28	205	57.10
23FEB17	1	0.28	206	57.38
27FEB17	1	0.28	207	57.66
01MAR17	1	0.28	208	57.94
05MAR17	1	0.28	209	58.22
07MAR17	1	0.28	210	58.50
14MAR17	1	0.28	211	58.77
15MAR17	1	0.28	212	59.05
18MAR17	1	0.28	213	59.33
20MAR17	2	0.56	215	59.89
22MAR17	2	0.56	217	60.45
24MAR17	1	0.28	218	60.72
27MAR17	1	0.28	219	61.00
03APR17	4	1.11	223	62.12
14APR17	1	0.28	224	62.40
17APR17	3	0.84	227	63.23
18APR17	1	0.28	228	63.51
19APR17	1	0.28	229	63.79
24APR17	2	0.56	231	64.35
26APR17	1	0.28	232	64.62
28APR17	1	0.28	233	64.90
04MAY17	1	0.28	234	65.18
07MAY17	1	0.28	235	65.46
16MAY17	1	0.28	236	65.74
17MAY17	1	0.28	237	66.02
26MAY17	1	0.28	238	66.30
29MAY17	1	0.28	239	66.57
03JUN17	1	0.28	240	66.85
07JUN17	1	0.28	241	67.13

The FREQ Procedure

SpecimenDt				
SpecimenDt	Frequency	Percent	Cumulative Frequency	Cumulative Percent
09JUN17	1	0.28	242	67.41
25JUN17	1	0.28	243	67.69
28JUN17	1	0.28	244	67.97
17JUL17	1	0.28	245	68.25
20JUL17	1	0.28	246	68.52
08AUG17	1	0.28	247	68.80
10AUG17	2	0.56	249	69.36
14AUG17	1	0.28	250	69.64
15AUG17	1	0.28	251	69.92
21AUG17	1	0.28	252	70.19
28AUG17	1	0.28	253	70.47
12SEP17	1	0.28	254	70.75
14SEP17	2	0.56	256	71.31
21SEP17	1	0.28	257	71.59
25SEP17	1	0.28	258	71.87
10OCT17	1	0.28	259	72.14
19OCT17	1	0.28	260	72.42
24OCT17	1	0.28	261	72.70
31OCT17	1	0.28	262	72.98
02NOV17	1	0.28	263	73.26
10NOV17	1	0.28	264	73.54
18NOV17	1	0.28	265	73.82
20NOV17	1	0.28	266	74.09
24NOV17	1	0.28	267	74.37
25NOV17	1	0.28	268	74.65
27NOV17	1	0.28	269	74.93
28NOV17	2	0.56	271	75.49
13DEC17	1	0.28	272	75.77
18DEC17	1	0.28	273	76.04
27DEC17	1	0.28	274	76.32
08JAN18	1	0.28	275	76.60
11JAN18	1	0.28	276	76.88
15JAN18	1	0.28	277	77.16
22JAN18	1	0.28	278	77.44
24JAN18	1	0.28	279	77.72

The FREQ Procedure

SpecimenDt				
SpecimenDt	Frequency	Percent	Cumulative Frequency	Cumulative Percent
29JAN18	1	0.28	280	77.99
30JAN18	2	0.56	282	78.55
03FEB18	1	0.28	283	78.83
06FEB18	1	0.28	284	79.11
23FEB18	1	0.28	285	79.39
24FEB18	1	0.28	286	79.67
26FEB18	1	0.28	287	79.94
01MAR18	2	0.56	289	80.50
05MAR18	3	0.84	292	81.34
07MAR18	2	0.56	294	81.89
14MAR18	1	0.28	295	82.17
15MAR18	1	0.28	296	82.45
16MAR18	1	0.28	297	82.73
21MAR18	1	0.28	298	83.01
24MAR18	1	0.28	299	83.29
26MAR18	1	0.28	300	83.57
28MAR18	1	0.28	301	83.84
03APR18	1	0.28	302	84.12
05APR18	1	0.28	303	84.40
17APR18	1	0.28	304	84.68
18APR18	1	0.28	305	84.96
22APR18	1	0.28	306	85.24
01MAY18	2	0.56	308	85.79
07MAY18	1	0.28	309	86.07
08MAY18	1	0.28	310	86.35
12MAY18	1	0.28	311	86.63
23MAY18	1	0.28	312	86.91
24MAY18	1	0.28	313	87.19
29MAY18	1	0.28	314	87.47
01JUN18	1	0.28	315	87.74
06JUN18	1	0.28	316	88.02
11JUN18	1	0.28	317	88.30
13JUN18	1	0.28	318	88.58
14JUN18	1	0.28	319	88.86
22JUN18	1	0.28	320	89.14

The FREQ Procedure

SpecimenDt				
SpecimenDt	Frequency	Percent	Cumulative Frequency	Cumulative Percent
29JUN18	1	0.28	321	89.42
14JUL18	1	0.28	322	89.69
20JUL18	1	0.28	323	89.97
23JUL18	1	0.28	324	90.25
24JUL18	1	0.28	325	90.53
25JUL18	1	0.28	326	90.81
26JUL18	3	0.84	329	91.64
09AUG18	4	1.11	333	92.76
17AUG18	2	0.56	335	93.31
20AUG18	1	0.28	336	93.59
22AUG18	1	0.28	337	93.87
27AUG18	1	0.28	338	94.15
31AUG18	2	0.56	340	94.71
29SEP18	1	0.28	341	94.99
30SEP18	1	0.28	342	95.26
08OCT18	1	0.28	343	95.54
19OCT18	1	0.28	344	95.82
24OCT18	1	0.28	345	96.10
25OCT18	1	0.28	346	96.38
05NOV18	1	0.28	347	96.66
06NOV18	1	0.28	348	96.94
07NOV18	1	0.28	349	97.21
13NOV18	2	0.56	351	97.77
20NOV18	1	0.28	352	98.05
26NOV18	1	0.28	353	98.33
29NOV18	1	0.28	354	98.61
07DEC18	1	0.28	355	98.89
08DEC18	1	0.28	356	99.16
14DEC18	1	0.28	357	99.44
15DEC18	1	0.28	358	99.72
23DEC18	1	0.28	359	100.00

Obs	Code	CPEid	DOCDt	LastChartDt	DeathDt	DeathDtCode	Moved	Date_moved_out
1	0	C0003	.	18NOV2010	.	99	.	.
2	0	C0004	.	18DEC2010	.	99	.	.
3	0	C0007	.	09JUN2010	.	99	.	.
4	0	C1003(NON CPE conversion)	09APR2013	24MAY2011	.	99	.	.
5	0	C1005	.	25OCT2011	.	99	.	.
6	0	C1008	.	29FEB2012	.	99	.	.
7	0	C1013	.	02MAY2011	.	99	.	.
9	0	C1025	03OCT2013	13OCT2011	.	99	.	.
10	0	C1033	.	09MAR2012	.	99	.	.
11	0	C1034	.	02SEP2011	.	99	.	.
12	0	C1035	07MAR2012	21OCT2011	.	99	.	.
13	0	C1036	20JUN2013	10MAY2012	.	99	.	.
14	0	C1037	.	13JAN2012	.	99	.	.
15	0	C1038	.	12OCT2011	.	99	.	.
21	0	C2013	25MAR2013	24SEP2012	.	99	.	.
22	0	C2014	22FEB2018	09AUG2012	.	99	.	.
23	0	C2015	.	12SEP2012	.	99	.	.
24	0	C2016	.	25SEP2012	.	99	.	.

Obs	MRN	SPECIMEN	ClinIsoDt	SpecimenDt	HOSPITAL
1	E7779986	01 Rectal/Colostomy/Stool	.	23OCT10	William Osler - Etobicoke Hospital
2	805707479	01 Rectal/Colostomy/Stool	.	06DEC10	Mount Sinai Hospital
3	805069544	01 Rectal/Colostomy/Stool	.	09JUN10	Mount Sinai Hospital
4	E8174020	01 Rectal/Colostomy/Stool	.	11MAY11	William Osler - Etobicoke Hospital
5	N317265	01 Rectal/Colostomy/Stool	.	19OCT11	William Osler - Brampton Civic Hospital
6	N150780	01 Rectal/Colostomy/Stool	.	23NOV11	William Osler - Brampton Civic Hospital
7	CNTY-450888	01 Rectal/Colostomy/Stool	.	13APR11	Southlake Regional Health Centre
9	488432/H1602969	01 Rectal/Colostomy/Stool	.	07SEP11	North York - General Division
10	J98826	01 Rectal/Colostomy/Stool	.	26APR11	Joseph Brant Memorial Hospital
11	118875	01 Rectal/Colostomy/Stool	.	19AUG11	Toronto East General & Orthopaedic Hospital
12	G434049	01 Rectal/Colostomy/Stool	.	26SEP11	Scarborough Hospital - Grace Division
13	H1237517	01 Rectal/Colostomy/Stool	.	28APR11	Scarborough Hospital - General Division
14	J573070	01 Rectal/Colostomy/Stool	.	23APR11	Joseph Brant Memorial Hospital
15	2671714	09 Other non-sterile sites(perineum)	.	19SEP11	St. Michael's Hospital
21	N171456	01 Rectal/Colostomy/Stool	.	30JUL12	William Osler - Brampton Civic Hospital
22	N366484	01 Rectal/Colostomy/Stool	.	09AUG12	William Osler - Brampton Civic Hospital
23	N465294	01 Rectal/Colostomy/Stool	.	11SEP12	William Osler - Brampton Civic Hospital
24	E8335571	01 Rectal/Colostomy/Stool	.	18SEP12	William Osler - Etobicoke Hospital

Obs	Code	CPEid	DOCDt	LastChartDt	DeathDt	DeathDtCode	Moved	Date_moved_out
25	0	C2017	.	27DEC2012	.	99	.	.
27	0	C2024	.	14JUN2012	.	99	.	.
28	0	C2025	09NOV2012	09NOV2012	.	99	.	.
29	0	C2026	.	06FEB2013	.	99	.	.
30	0	C2027	.	17NOV2012	.	99	.	.
31	0	C2030	.	29DEC2012	.	99	.	.
32	0	C2032	.	25JUN2012	.	99	.	.
33	0	C2033	.	24JUL2012	.	99	.	.
34	0	C2042	.	24AUG2012	.	99	.	.
35	0	C2043	.	02NOV2012	.	99	.	.
36	0	C2045	.	26JUL2012	.	99	.	.
38	0	C2048	.	10JUN2011	.	99	.	.
40	0	C3004	.	06MAY2013	.	99	.	.
42	0	C3009	.	03AUG2013	.	99	.	.
45	0	C3016	14FEB2019	09FEB2013	.	99	.	.
47	0	C3018	.	18MAR2013	.	99	.	.
48	0	C3019	.	15APR2013	.	99	.	.
50	0	C3023	.	19JUL2013	.	99	.	.

Obs	MRN	SPECIMEN	ClinIsoDt	SpecimenDt	HOSPITAL
25	N106104	01 Rectal/Colostomy/Stool	.	18SEP12	William Osler - Brampton Civic Hospital
27	CNTY-692304	01 Rectal/Colostomy/Stool	.	05JUN12	Southlake Regional Health Centre
28	2874118	01 Rectal/Colostomy/Stool	.	01SEP12	Sunnybrook - Sunnybrook Campus
29	2877345	01 Rectal/Colostomy/Stool	.	15SEP12	Sunnybrook - Sunnybrook Campus
30	YC-931456	01 Rectal/Colostomy/Stool	.	12NOV12	York Central Hospital
31	644668	01 Rectal/Colostomy/Stool	.	22DEC12	North York - General Division
32	803185594	01 Rectal/Colostomy/Stool	.	22JUN12	Mount Sinai Hospital
33	805817436	01 Rectal/Colostomy/Stool	.	23JUL12	Mount Sinai Hospital
34	799885	01 Rectal/Colostomy/Stool	.	22AUG12	Lakeridge Health - Oshawa
35	287499	01 Rectal/Colostomy/Stool	.	16OCT12	Lakeridge Health - Oshawa
36	J2726855	01 Rectal/Colostomy/Stool	.	21JUL12	St. Michael's Hospital
38	2359533	01 Rectal/Colostomy/Stool	.	23MAY11	Hospital for Sick Children
40	E8398621	01 Rectal/Colostomy/Stool	.	06MAY13	William Osler - Etobicoke Hospital
42	N215503	01 Rectal/Colostomy/Stool	.	28JUL13	William Osler - Brampton Civic Hospital
45	E8223861	01 Rectal/Colostomy/Stool	.	08FEB13	William Osler - Etobicoke Hospital
47	N121538	01 Rectal/Colostomy/Stool	.	12MAR13	William Osler - Brampton Civic Hospital
48	N499916	01 Rectal/Colostomy/Stool	.	08APR13	William Osler - Brampton Civic Hospital
50	MSH900333651	01 Rectal/Colostomy/Stool	.	13JUL13	Markham Stouffville Hospital

Obs	Code	CPEid	DOCDt	LastChartDt	DeathDt	DeathDtCode	Moved	Date_moved_out
51	0	C3024	.	23OCT2013	.	99	.	.
53	0	C3035	.	20FEB2013	.	99	.	.
55	0	C3042	.	28SEP2019	.	99	.	.
56	0	C3046	.	10JAN2013	.	99	.	.
58	0	C4003	.	16SEP2014	.	99	.	.
59	0	C4006	.	11APR2014	.	99	.	.
60	0	C4008	.	15APR2014	.	99	.	.
61	0	C4009	.	04JUN2015	.	99	.	.
62	0	C4011	26FEB2016	20JUN2018	.	99	.	.
63	0	C4015	.	16APR2015	.	99	.	.
65	0	C4017	.	31MAY2014	.	99	.	.
66	0	C4021	08SEP2015	13JUN2017	.	99	.	.
67	0	C4022	.	15OCT2018	.	99	.	.
68	1	C4023	.	29AUG2017	.	99	.	.
69	0	C4024	14JUN2016	24JAN2017	.	99	.	.
71	0	C4026	.	18AUG2014	.	2	.	.
72	0	C4029	.	28MAR2014	.	99	.	.
73	0	C4030	.	18MAR2014	.	99	.	.

Obs	MRN	SPECIMEN	ClinIsoDt	SpecimenDt	HOSPITAL
51	CNTY-534832	01 Rectal/Colostomy/Stool	.	19OCT13	Southlake Regional Health Centre
53	H1345101	01 Rectal/Colostomy/Stool	.	11FEB13	Scarborough Hospital - General Division
55	J2797783	01 Rectal/Colostomy/Stool	.	22SEP13	St. Michael's Hospital
56	J2752817	01 Rectal/Colostomy/Stool	.	28DEC12	St. Michael's Hospital
58	805381425	01 Rectal/Colostomy/Stool	.	08SEP14	Mount Sinai Hospital
59	G197225	01 Rectal/Colostomy/Stool	.	07APR14	Scarborough Hospital - Grace Division
60	N552599	01 Rectal/Colostomy/Stool	.	30JAN14	William Osler - Brampton Civic Hospital
61	N277034	01 Rectal/Colostomy/Stool	.	30JAN14	William Osler - Brampton Civic Hospital
62	N26450	01 Rectal/Colostomy/Stool	.	13FEB14	William Osler - Brampton Civic Hospital
63	N561903	01 Rectal/Colostomy/Stool	.	20MAR14	William Osler - Brampton Civic Hospital
65	N234575	01 Rectal/Colostomy/Stool	.	05MAY14	William Osler - Brampton Civic Hospital
66	N294833	01 Rectal/Colostomy/Stool	.	07JUL14	William Osler - Brampton Civic Hospital
67	N429833	01 Rectal/Colostomy/Stool	.	15JUL14	William Osler - Brampton Civic Hospital
68	N459160	01 Rectal/Colostomy/Stool	30NOV15	15JUL14	William Osler - Brampton Civic Hospital
69	N14468	01 Rectal/Colostomy/Stool	.	16JUL14	William Osler - Brampton Civic Hospital
71	N000582369	01 Rectal/Colostomy/Stool	.	28JUL14	William Osler - Brampton Civic Hospital
72	YC-806044	01 Rectal/Colostomy/Stool	.	23MAR14	York Central Hospital
73	YC-634594	01 Rectal/Colostomy/Stool	.	10MAR14	York Central Hospital

Obs	Code	CPEid	DOCDt	LastChartDt	DeathDt	DeathDtCode	Moved	Date_moved_out
74	0	C4031	04JUL2015	20MAR2014	.	99	.	.
75	0	C4034	.	30SEP2014	.	99	.	.
77	0	C4043	.	28NOV2013	.	99	.	.
79	0	C4054	.	31OCT2014	.	99	.	.
81	0	C4059	.	03MAR2016	.	99	.	.
82	0	C4070	.	10MAR2014	.	99	.	.
85	0	C4074	.	24DEC2016	.	99	.	.
88	0	C5012	22DEC2016	23JAN2015	.	99	.	.
89	0	C5013	02MAY2016	20JAN2014	.	99	.	.
90	0	C5017	07APR2016	09APR2015	.	99	.	.
91	0	C5021	08SEP2015	12OCT2016	.	99	.	.
92	0	C5022	18JUN2016	10JUN2015	.	99	.	.
96	0	C5028	26JUN2016	06AUG2015	.	99	.	.
100	0	C5037	.	24FEB2015	.	99	98	05NOV2015
101	0	C5038	11MAY2017	12AUG2015	.	99	.	.
102	0	C5039	18NOV2016	17AUG2015	.	99	.	.
103	0	C5041	11NOV2018	27MAR2017	.	99	.	.
104	0	C5043	.	21AUG2015	.	99	.	.

Obs	MRN	SPECIMEN	ClinIsoDt	SpecimenDt	HOSPITAL
74	YC-699647	01 Rectal/Colostomy/Stool	.	10MAR14	York Central Hospital
75	303262	01 Rectal/Colostomy/Stool	.	23SEP14	Credit Valley Hospital
77	1371595	01 Rectal/Colostomy/Stool	.	14NOV13	Toronto East General & Orthopaedic Hospital
79	4132895	01 Rectal/Colostomy/Stool	.	11OCT14	Toronto General Hospital
81	805844970	01 Rectal/Colostomy/Stool	.	04FEB14	Mount Sinai Hospital
82	452650	01 Rectal/Colostomy/Stool	.	03MAR14	Lakeridge Health - Oshawa
85	899055	01 Rectal/Colostomy/Stool	.	30SEP14	Credit Valley Hospital
88	N569944	01 Rectal/Colostomy/Stool	.	20JAN15	William Osler - Brampton Civic Hospital
89	N260260	01 Rectal/Colostomy/Stool	.	20JAN15	William Osler - Brampton Civic Hospital
90	N291933	01 Rectal/Colostomy/Stool	.	07APR15	William Osler - Brampton Civic Hospital
91	N522537	01 Rectal/Colostomy/Stool	.	23APR15	William Osler - Brampton Civic Hospital
92	N42542	01 Rectal/Colostomy/Stool	.	06JUN15	William Osler - Brampton Civic Hospital
96	E8450432	01 Rectal/Colostomy/Stool	.	08JUN15	William Osler - Etobicoke Hospital
100	4262864	01 Rectal/Colostomy/Stool	.	17FEB15	Toronto General Hospital
101	E8126214	01 Rectal/Colostomy/Stool	.	11JUL15	William Osler - Etobicoke Hospital
102	N264109	01 Rectal/Colostomy/Stool	.	17JUL15	William Osler - Brampton Civic Hospital
103	N374131	01 Rectal/Colostomy/Stool	.	03AUG15	William Osler - Brampton Civic Hospital
104	0654437	01 Rectal/Colostomy/Stool	.	17AUG15	Toronto East General & Orthopaedic Hospital

Obs	Code	CPEid	DOCDt	LastChartDt	DeathDt	DeathDtCode	Moved	Date_moved_out
106	0	C5045	.	06OCT2015	.	99	98	18NOV2015
107	0	C5055	11JUL2017	14SEP2017	.	99	.	.
108	0	C5058	27NOV2016	01SEP2015	.	99	.	.
109	0	C5062	14MAR2017	25NOV2015	.	99	.	.
110	0	C5064	06JUN2017	03DEC2015	.	99	.	.
111	0	C5068	07NOV2017	05DEC2015	.	99	.	.
115	0	C6001	11FEB2017	09OCT2018	.	99	.	.
116	0	C6004	.	22FEB2016	.	99	.	.
117	0	C6006	13OCT2016	01MAR2016	.	99	.	.
118	0	C6007	27JUL2017	01AUG2018	.	99	.	.
122	0	C6012	30JUL2016	18FEB2016	.	99	.	.
123	0	C6013	02JAN2017	29FEB2016	.	99	.	.
124	0	C6015	.	02MAR2016	.	99	.	.
125	0	C6017	.	09MAR2016	.	99	.	.
126	0	C6020	10MAR2017	16MAR2016	.	99	.	.
127	0	C6021	11MAR2017	18APR2017	.	99	.	.
129	0	C6023	28FEB2017	19MAY2016	.	99	.	.
131	0	C6025	19JUN2017	26FEB2017	.	99	.	.

Obs	MRN	SPECIMEN	ClinIsoDt	SpecimenDt	HOSPITAL
106	E8479809	01 Rectal/Colostomy/Stool	.	28SEP15	William Osler - Etobicoke Hospital
107	2598784	01 Rectal/Colostomy/Stool	.	03JUL15	Trillium Health Centre - Mississauga Site
108	E8476190	01 Rectal/Colostomy/Stool	.	20AUG15	William Osler - Etobicoke Hospital
109	0560955	01 Rectal/Colostomy/Stool	.	26NOV15	Toronto General Hospital
110	806-046-954	01 Rectal/Colostomy/Stool	.	01DEC15	Mount Sinai Hospital
111	3946874	01 Rectal/Colostomy/Stool	.	06DEC15	Toronto General Hospital
115	N225484	01 Rectal/Colostomy/Stool	.	25JAN16	William Osler - Brampton Civic Hospital
116	N94532	01 Rectal/Colostomy/Stool	.	31JAN16	William Osler - Brampton Civic Hospital
117	850624	01 Rectal/Colostomy/Stool	.	05FEB16	Trillium Health Centre - Mississauga Site
118	N451947	01 Rectal/Colostomy/Stool	.	10FEB16	William Osler - Brampton Civic Hospital
122	N394282	01 Rectal/Colostomy/Stool	.	18FEB16	William Osler - Brampton Civic Hospital
123	E3583747	01 Rectal/Colostomy/Stool	.	21FEB16	William Osler - Etobicoke Hospital
124	5528901	01 Rectal/Colostomy/Stool	.	29FEB16	Sunnybrook - Sunnybrook Campus
125	E6612162	01 Rectal/Colostomy/Stool	.	07MAR16	William Osler - Etobicoke Hospital
126	N131071	01 Rectal/Colostomy/Stool	.	15MAR16	William Osler - Brampton Civic Hospital
127	N680165	01 Rectal/Colostomy/Stool	.	24MAR16	William Osler - Brampton Civic Hospital
129	N6125	01 Rectal/Colostomy/Stool	.	24MAR16	William Osler - Brampton Civic Hospital
131	Y0957016	01 Rectal/Colostomy/Stool	.	21MAR16	Rouge Valley - Centenary Health Centre

Obs	Code	CPEid	DOCDt	LastChartDt	DeathDt	DeathDtCode	Moved	Date_moved_out
132	0	C6029	11JAN2017	29NOV2018	.	99	.	.
133	0	C6031	.	28MAR2016	.	99	.	.
137	0	C6036	.	27FEB2018	.	99	.	.
139	0	C6039	06OCT2016	13SEP2016	.	99	.	.
140	0	C6041	11NOV2016	04MAY2016	.	99	.	.
142	0	C6043	04JUN2017	14MAY2016	.	99	.	.
146	0	C6063	.	04MAY2017	.	99	.	.
147	0	C6064	.	30DEC2016	.	99	.	.
149	0	C6068	.	19JAN2017	.	99	.	.
151	0	C6071	27SEP2017	29MAR2016	.	99	.	.
152	0	C6075	07OCT2017	11SEP2016	.	99	.	.
153	0	C6076	.	17OCT2017	.	99	.	.
155	0	C6079	27SEP2017	12SEP2016	.	99	.	.
156	0	C6081	.	24SEP2016	.	99	.	.
157	0	C6083	06FEB2018	07OCT2015	.	99	.	.
158	0	C6086	.	08DEC2016	.	99	.	.
161	0	C6089	.	18APR2016	.	99	.	.
162	0	C6091	14SEP2018	31AUG2016	.	99	.	.

Obs	MRN	SPECIMEN	ClinIsoDt	SpecimenDt	HOSPITAL
132	N222285	01 Rectal/Colostomy/Stool	.	01APR16	William Osler - Brampton Civic Hospital
133	806-045-573	01 Rectal/Colostomy/Stool	.	27MAR16	Mount Sinai Hospital
137	N645248	01 Rectal/Colostomy/Stool	.	17APR16	William Osler - Brampton Civic Hospital
139	N555713	01 Rectal/Colostomy/Stool	.	19APR16	William Osler - Brampton Civic Hospital
140	E2972826	01 Rectal/Colostomy/Stool	.	02MAY16	William Osler - Etobicoke Hospital
142	N525702	01 Rectal/Colostomy/Stool	.	09MAY16	William Osler - Brampton Civic Hospital
146	N637469	01 Rectal/Colostomy/Stool	.	18JUL16	William Osler - Brampton Civic Hospital
147	G0432275	01 Rectal/Colostomy/Stool	.	22JUL16	Scarborough Hospital - Grace Division
149	E7322118/H1564619	01 Rectal/Colostomy/Stool	.	02AUG16	William Osler - Etobicoke Hospital
151	N290884	01 Rectal/Colostomy/Stool	.	29AUG16	William Osler - Brampton Civic Hospital
152	E8023633	01 Rectal/Colostomy/Stool	.	08SEP16	William Osler - Etobicoke Hospital
153	3165265	01 Rectal/Colostomy/Stool	.	20SEP16	Sunnybrook - Sunnybrook Campus
155	N653881	01 Rectal/Colostomy/Stool	.	12SEP16	William Osler - Brampton Civic Hospital
156	E8191165	01 Rectal/Colostomy/Stool	.	22SEP16	William Osler - Etobicoke Hospital
157	806090623	01 Rectal/Colostomy/Stool	.	22SEP16	Mount Sinai Hospital
158	3846859/H1557155	01 Rectal/Colostomy/Stool	.	08AUG16	Toronto Western Hospital
161	4274233	01 Rectal/Colostomy/Stool	.	12APR16	Toronto General Hospital
162	3732932	01 Rectal/Colostomy/Stool	.	25JUN15	Sunnybrook - Sunnybrook Campus

Obs	Code	CPEid	DOCDt	LastChartDt	DeathDt	DeathDtCode	Moved	Date_moved_out
164	0	C6098	.	03NOV2016	.	99	.	.
167	0	C6105	.	10DEC2016	.	99	.	.
169	0	C6112	.	13NOV2016	.	99	98	14NOV2016
170	0	C6114(NON CPE CONVERSION)	23FEB2018	15FEB2018	.	99	.	.
171	0	C6118	.	10JAN2017	.	99	.	.
173	0	C6121	09JUN2018	27JUL2016	.	99	.	.
174	0	C6124	18DEC2017	23FEB2017	.	99	.	.
175	0	C6138	05MAR2018	20FEB2017	.	99	.	.
176	0	C6139	.	21DEC2016	.	99	98	23AUG2017
177	0	C6140	.	14JUN2016	.	99	.	.
178	0	C6141	.	24OCT2016	.	99	98	24OCT2016
179	0	C6144	.	18MAY2017	.	99	.	.
180	0	C6146	.	15NOV2016	.	2	.	.
183	0	C6158	.	18OCT2016	.	99	.	.
184	0	C7003	19MAR2018	18JUN2017	.	99	.	.
186	0	C7009	24JUL2018	06MAY2017	.	99	.	.
187	0	C7010	.	14AUG2017	.	99	.	.
189	0	C7018	.	08MAY2017	.	99	.	.

Obs	MRN	SPECIMEN	ClinIsoDt	SpecimenDt	HOSPITAL
164	E8524485	01 Rectal/Colostomy/Stool	.	29OCT16	William Osler - Etobicoke Hospital
167	HI00064791	01 Rectal/Colostomy/Stool	.	08NOV16	Bridgepoint
169	N722703	01 Rectal/Colostomy/Stool	.	07NOV16	William Osler - Brampton Civic Hospital
170	H1004966	01 Rectal/Colostomy/Stool	.	29NOV16	Scarborough Hospital - General Division
171	E8518032	01 Rectal/Colostomy/Stool	.	05DEC16	William Osler - Etobicoke Hospital
173	N729564/H1565124	01 Rectal/Colostomy/Stool	.	21DEC16	William Osler - Brampton Civic Hospital
174	E8529909	01 Rectal/Colostomy/Stool	.	22DEC16	William Osler - Etobicoke Hospital
175	E3405024	01 Rectal/Colostomy/Stool	.	09AUG16	William Osler - Etobicoke Hospital
176	N554959	01 Rectal/Colostomy/Stool	.	06JUL16	William Osler - Brampton Civic Hospital
177	1238836	01 Rectal/Colostomy/Stool	.	13JUN16	Toronto East General & Orthopaedic Hospital
178	N25405	01 Rectal/Colostomy/Stool	.	27SEP16	Headwaters Health Care Centre
179	0001255411 (CVH)/L483402 (Trillium)	01 Rectal/Colostomy/Stool	.	12JUN16	Credit Valley Hospital
180	4272525	01 Rectal/Colostomy/Stool	.	03NOV16	Toronto Western Hospital
183	M00008203	01 Rectal/Colostomy/Stool	.	18OCT16	Markham Stouffville Hospital
184	N298705	01 Rectal/Colostomy/Stool	.	08JAN17	William Osler - Brampton Civic Hospital
186	J1683374	01 Rectal/Colostomy/Stool	.	14FEB17	St. Michael's Hospital
187	N736665	01 Rectal/Colostomy/Stool	.	13FEB17	William Osler - Brampton Civic Hospital
189	806135667	01 Rectal/Colostomy/Stool	.	15MAR17	Mount Sinai Hospital

Obs	Code	CPEid	DOCDt	LastChartDt	DeathDt	DeathDtCode	Moved	Date_moved_out
191	0	C7022	.	02APR2017	.	99	.	.
192	0	C7026	.	25MAR2017	.	99	.	.
193	0	C7029	17APR2018	24MAR2017	.	99	.	.
194	0	C7030	.	28MAR2017	.	99	.	.
195	0	C7035	.	02MAY2017	.	99	.	.
197	0	C7037	01AUG2018	04APR2017	.	99	.	.
198	0	C7038	08MAR2018	19APR2017	.	99	.	.
200	0	C7046	.	13OCT2017	.	99	.	.
202	0	C7051	.	26APR2017	.	99	.	.
204	0	C7053	.	05DEC2017	.	99	.	.
205	0	C7055	28FEB2019	31MAY2017	.	99	.	.
207	0	C7060	25APR2018	23JUN2017	.	99	.	.
208	0	C7061	.	19MAY2017	.	99	.	.
210	0	C7064	13APR2018	03JUN2017	.	99	.	.
211	0	C7069	11NOV2018	12JUN2017	.	99	98	15JUL2018
212	0	C7072	17APR2018	05JUL2017	.	99	.	.
216	0	C7084	21AUG2018	19AUG2017	.	99	.	.
219	0	C7088	02AUG2018	16AUG2017	.	99	.	.

Obs	MRN	SPECIMEN	ClinIsoDt	SpecimenDt	HOSPITAL
191	N493845	01 Rectal/Colostomy/Stool	.	14MAR17	William Osler - Brampton Civic Hospital
192	N249608	01 Rectal/Colostomy/Stool	.	22MAR17	William Osler - Brampton Civic Hospital
193	N326105	01 Rectal/Colostomy/Stool	.	24MAR17	William Osler - Brampton Civic Hospital
194	E1494327	01 Rectal/Colostomy/Stool	.	27MAR17	William Osler - Etobicoke Hospital
195	E8538410/H1579335	01 Rectal/Colostomy/Stool	.	03APR17	William Osler - Etobicoke Hospital
197	N216688	01 Rectal/Colostomy/Stool	.	03APR17	William Osler - Brampton Civic Hospital
198	E8397409	01 Rectal/Colostomy/Stool	.	20MAR17	William Osler - Etobicoke Hospital
200	3194799	01 Rectal/Colostomy/Stool	.	26APR17	Sunnybrook - Sunnybrook Campus
202	N479625	01 Rectal/Colostomy/Stool	.	24APR17	William Osler - Brampton Civic Hospital
204	1543449	01 Rectal/Colostomy/Stool	.	04MAY17	North York - General Division
205	N143604	01 Rectal/Colostomy/Stool	.	07MAY17	William Osler - Brampton Civic Hospital
207	N699373	01 Rectal/Colostomy/Stool	.	17MAY17	William Osler - Brampton Civic Hospital
208	J10692048	01 Rectal/Colostomy/Stool	.	16MAY17	St. Joseph's Health Centre Toronto
210	804460657	01 Rectal/Colostomy/Stool	.	03JUN17	Mount Sinai Hospital
211	1487871	01 Rectal/Colostomy/Stool	.	09JUN17	Toronto East General & Orthopaedic Hospital
212	N757304	01 Rectal/Colostomy/Stool	.	28JUN17	William Osler - Brampton Civic Hospital
216	N424843	01 Rectal/Colostomy/Stool	.	10AUG17	William Osler - Brampton Civic Hospital
219	806163297	01 Rectal/Colostomy/Stool	.	15AUG17	Mount Sinai Hospital

Obs	Code	CPEid	DOCDt	LastChartDt	DeathDt	DeathDtCode	Moved	Date_moved_out
220	0	C7089	14JAN2019	22AUG2017	.	99	.	.
221	0	C7092	.	19AUG2017	.	99	.	.
222	0	C7099	02AUG2018	16SEP2017	.	99	.	.
223	0	C7100	09JAN2019	23FEB2017	.	99	.	.
225	0	C7104	06MAY2018	25NOV2017	.	99	.	.
226	0	C7109	26APR2018	22NOV2017	.	99	98	01MAR2018
227	0	C7110	08NOV2018	21OCT2017	.	99	.	.
228	0	C7113	.	07NOV2017	.	99	.	.
229	0	C7114	.	07NOV2017	.	99	.	.
230	0	C7116	10MAY2018	21APR2017	.	99	.	.
231	0	C7117	.	23FEB2017	.	99	.	.
232	0	C7118	20JUN2018	16APR2018	.	99	.	.
233	0	C7120	04JUN2018	03SEP2017	.	99	.	.
234	0	C7121	17APR2018	01MAY2017	.	99	.	.
235	0	C7122	.	28APR2018	.	99	98	01DEC2017
236	0	C7128	.	27NOV2017	.	99	.	.
237	0	C7130	10APR2019	27NOV2018	.	99	.	.
238	0	C7136	.	29NOV2017	.	99	98	29NOV2017

Obs	MRN	SPECIMEN	ClinIsoDt	SpecimenDt	HOSPITAL
220	J2852410	01 Rectal/Colostomy/Stool	.	21AUG17	St. Michael's Hospital
221	N763240	01 Rectal/Colostomy/Stool	.	14AUG17	William Osler - Brampton Civic Hospital
222	N472103	01 Rectal/Colostomy/Stool	.	14SEP17	William Osler - Brampton Civic Hospital
223	G0873248	01 Rectal/Colostomy/Stool	.	12SEP17	Scarborough Hospital - Grace Division
225	2759801	01 Rectal/Colostomy/Stool	.	25SEP17	Hospital for Sick Children
226	E8391880	01 Rectal/Colostomy/Stool	.	10OCT17	William Osler - Etobicoke Hospital
227	N661749	01 Rectal/Colostomy/Stool	.	19OCT17	William Osler - Brampton Civic Hospital
228	N422766	01 Rectal/Colostomy/Stool	.	31OCT17	William Osler - Brampton Civic Hospital
229	J10711109	01 Rectal/Colostomy/Stool	.	02NOV17	St. Joseph's Health Centre Toronto
230	805181361	01 Rectal/Colostomy/Stool	.	18APR17	Mount Sinai Hospital
231	424793776	01 Rectal/Colostomy/Stool	.	21FEB17	Mount Sinai Hospital
232	4435511	01 Rectal/Colostomy/Stool	.	08FEB17	Toronto General Hospital
233	2017902	01 Rectal/Colostomy/Stool	.	01MAR17	Toronto General Hospital
234	2621072	01 Rectal/Colostomy/Stool	.	14APR17	Toronto General Hospital
235	4455308	01 Rectal/Colostomy/Stool	.	28APR17	Toronto Western Hospital
236	4492306	01 Rectal/Colostomy/Stool	.	25NOV17	Toronto General Hospital
237	806179039	01 Rectal/Colostomy/Stool	.	27NOV17	Mount Sinai Hospital
238	N779277	01 Rectal/Colostomy/Stool	.	28NOV17	William Osler - Brampton Civic Hospital

Obs	Code	CPEid	DOCDt	LastChartDt	DeathDt	DeathDtCode	Moved	Date_moved_out
239	0	C7142	.	16DEC2017	.	99	.	.
240	0	C7143	03OCT2018	12JAN2018	.	99	.	.
241	0	C7147	08MAR2019	10JAN2018	.	99	.	.
242	0	C7159	13AUG2018	09MAR2016	.	99	.	.
247	0	C7166	02APR2019	24JUL2018	.	99	.	.
248	0	C7167	.	26SEP2017	.	99	98	28MAR2017
255	0	C8001	20OCT2018	11JAN2018	.	99	.	.
257	0	C8003	.	31JAN2018	.	99	.	.
258	0	C8004	31OCT2018	25JAN2018	.	99	.	.
259	0	C8008	.	24JAN2018	.	99	.	.
261	0	C8012	14SEP2018	02AUG2018	.	99	.	.
263	0	C8015	.	06MAR2018	.	99	.	.
264	0	C8020	06JAN2019	26FEB2018	.	99	.	.
265	0	C8022	27SEP2018	27FEB2018	.	99	98	15DEC2018
267	0	C8024	10DEC2018	05MAR2018	.	99	.	.
269	0	C8026	12MAR2019	02MAR2018	.	99	.	.
270	0	C8030	04DEC2018	27MAR2018	.	99	.	.
271	0	C8031	17APR2019	06MAR2018	.	99	.	.

Obs	MRN	SPECIMEN	ClinIsoDt	SpecimenDt	HOSPITAL
239	J10481314	01 Rectal/Colostomy/Stool	.	13DEC17	St. Joseph's Health Centre Toronto
240	4257998	01 Rectal/Colostomy/Stool	.	24OCT17	Toronto General Hospital
241	N480477	01 Rectal/Colostomy/Stool	.	18DEC17	William Osler - Brampton Civic Hospital
242	M00042132	01 Rectal/Colostomy/Stool	.	16FEB17	Markham Stouffville Hospital
247	3044270	01 Rectal/Colostomy/Stool	.	20NOV17	Sunnybrook - Sunnybrook Campus
248	3192800	01 Rectal/Colostomy/Stool	.	22MAR17	Sunnybrook - Sunnybrook Campus
255	806177622	01 Rectal/Colostomy/Stool	.	11JAN18	Mount Sinai Hospital
257	V0534051	01 Rectal/Colostomy/Stool	.	15JAN18	Rouge Valley - Ajax & Pickering
258	N272826	01 Rectal/Colostomy/Stool	.	22JAN18	William Osler - Brampton Civic Hospital
259	N664948	01 Rectal/Colostomy/Stool	.	24JAN18	William Osler - Brampton Civic Hospital
261	Y0771598	01 Rectal/Colostomy/Stool	.	29JAN18	Rouge Valley - Centenary Health Centre
263	V0014670	01 Rectal/Colostomy/Stool	.	06FEB18	Rouge Valley - Ajax & Pickering
264	3075069	01 Rectal/Colostomy/Stool	.	23FEB18	St. Michael's Hospital
265		01 Rectal/Colostomy/Stool	.	24FEB18	St. Michael's Hospital
267	N330763	01 Rectal/Colostomy/Stool	.	05MAR18	William Osler - Brampton Civic Hospital
269	N200736	01 Rectal/Colostomy/Stool	.	01MAR18	William Osler - Brampton Civic Hospital
270	H000683665	01 Rectal/Colostomy/Stool	.	26FEB18	Humber River - Wilson Site
271	H1621262	01 Rectal/Colostomy/Stool	.	01MAR18	Humber River - Wilson Site

Obs	Code	CPEid	DOCDt	LastChartDt	DeathDt	DeathDtCode	Moved	Date_moved_out
272	0	C8032	.	26MAR2018	.	99	.	.
273	0	C8034	03SEP2018	14AUG2018	.	99	.	.
276	0	C8040	.	28MAR2018	.	99	.	.
277	0	C8044	.	27MAR2018	.	99	.	.
278	0	C8049	17JAN2019	04APR2018	.	99	.	.
280	0	C8059	11FEB2019	09MAY2018	.	99	.	.
281	0	C8060	04MAR2019	23APR2018	.	99	.	.
286	0	C8069	28FEB2019	28JUL2018	.	99	.	.
287	0	C8074	.	25MAY2018	.	99	.	.
288	0	C8077	29MAR2019	28JUN2018	.	99	.	.
293	0	C8100	.	04AUG2018	.	99	98	01AUG2018
299	0	C8107	17APR2019	14AUG2018	.	99	.	.
305	0	C8124	.	01SEP2018	.	99	98	01SEP2018
309	0	C8132	08JAN2019	27SEP2018	.	99	.	.
310	0	C8133	12APR2019	21AUG2018	.	99	.	.
311	0	C8137	18APR2019	23AUG2018	.	99	.	.
312	0	C8138	17APR2019	23AUG2018	.	99	.	.
313	0	C8139	03APR2019	09OCT2018	.	99	.	.

Obs	MRN	SPECIMEN	ClinIsoDt	SpecimenDt	HOSPITAL
272	4330327	01 Rectal/Colostomy/Stool	.	14MAR18	Toronto Western Hospital
273	291077	01 Rectal/Colostomy/Stool	.	07MAR18	Markham Stouffville Hospital
276	Y1369607	01 Rectal/Colostomy/Stool	.	28MAR18	Rouge Valley - Centenary Health Centre
277	E007219702	01 Rectal/Colostomy/Stool	.	24MAR18	William Osler - Etobicoke Hospital
278	N000177278	01 Rectal/Colostomy/Stool	.	03APR18	William Osler - Brampton Civic Hospital
280	2323386	01 Rectal/Colostomy/Stool	.	18APR18	Trillium Health Centre - Mississauga Site
281	N732077	01 Rectal/Colostomy/Stool	.	22APR18	William Osler - Brampton Civic Hospital
286	N000568900	01 Rectal/Colostomy/Stool	.	08MAY18	William Osler - Brampton Civic Hospital
287	2175846	01 Rectal/Colostomy/Stool	.	24MAY18	Trillium Health Centre - Mississauga Site
288	N000576555	01 Rectal/Colostomy/Stool	.	14JUN18	William Osler - Brampton Civic Hospital
293	N000810256	01 Rectal/Colostomy/Stool	.	14JUL18	William Osler - Brampton Civic Hospital
299	806182407	01 Rectal/Colostomy/Stool	.	09AUG18	Mount Sinai Hospital
305	805644701	01 Rectal/Colostomy/Stool	.	22AUG18	Mount Sinai Hospital
309	N577180	01 Rectal/Colostomy/Stool	.	27AUG18	William Osler - Brampton Civic Hospital
310	N818807	01 Rectal/Colostomy/Stool	.	17AUG18	William Osler - Brampton Civic Hospital
311	806-226-195	01 Rectal	.	26JUL18	Mount Sinai Hospital
312	806226196	01 Rectal	.	26JUL18	Mount Sinai Hospital
313	N000316434	01 Rectal	.	30SEP18	William Osler - Brampton Civic Hospital

Obs	Code	CPEid	DOCDt	LastChartDt	DeathDt	DeathDtCode	Moved	Date_moved_out
316	0	C8156	04FEB2019	19NOV2018	.	99	.	.
320	0	C8164	16APR2019	07MAR2018	.	99	.	.
324	0	C8172	14APR2019	22JUL2018	.	99	.	.
335	1	C1019	.	10JUN2013	.	99	.	.
338	1	C2037	.	25AUG2014	.	99	.	.
341	1	C3036	30JUN2013	24JUN2013	.	99	.	.
346	1	C5036	.	24NOV2015	.	99	.	.

Obs	MRN	SPECIMEN	ClinIsoDt	SpecimenDt	HOSPITAL
316	2051336	01 Rectal	.	25OCT18	North York - General Division
320	UT0147531	01 Rectal	.	05MAR18	Oakville Trafalgar Memorial Hospital
324	OT0517254	01 Rectal	.	20JUL18	Oakville Trafalgar Memorial Hospital
335	2465079	01 Rectal/Colostomy/Stool	31AUG11	25AUG11	Sunnybrook - Sunnybrook Campus
338	J669766	01 Rectal/Colostomy/Stool	05SEP13	14JUL12	St. Michael's Hospital
341	3712560	01 Rectal/Colostomy/Stool	27JUN13	14JUN13	Toronto Western Hospital
346	805957558	01 Rectal/Colostomy/Stool	09JUL15	04JUN15	Mount Sinai Hospital

Obs	Code	CPEid	DOCDt	LastChartDt	DeathDt	DeathDtCode	Moved	Date_moved_out
4	0	C1003(NON CPE conversion)	09APR2013	24MAY2011	.	99	.	.
8	0	C1017	18SEP2011	.	.	99	.	.
9	0	C1025	03OCT2013	13OCT2011	.	99	.	.
12	0	C1035	07MAR2012	21OCT2011	.	99	.	.
13	0	C1036	20JUN2013	10MAY2012	.	99	.	.
18	0	C2006	16JAN2014	.	.	99	.	.
21	0	C2013	25MAR2013	24SEP2012	.	99	.	.
22	0	C2014	22FEB2018	09AUG2012	.	99	.	.
28	0	C2025	09NOV2012	09NOV2012	.	99	.	.
45	0	C3016	14FEB2019	09FEB2013	.	99	.	.
62	0	C4011	26FEB2016	20JUN2018	.	99	.	.
66	0	C4021	08SEP2015	13JUN2017	.	99	.	.
69	0	C4024	14JUN2016	24JAN2017	.	99	.	.
74	0	C4031	04JUL2015	20MAR2014	.	99	.	.
88	0	C5012	22DEC2016	23JAN2015	.	99	.	.
89	0	C5013	02MAY2016	20JAN2014	.	99	.	.
90	0	C5017	07APR2016	09APR2015	.	99	.	.
91	0	C5021	08SEP2015	12OCT2016	.	99	.	.

Obs	MRN	SPECIMEN	ClinIsoDt	SpecimenDt	HOSPITAL
4	E8174020	01 Rectal/Colostomy/Stool	.	11MAY11	William Osler - Etobicoke Hospital
8	2640782	01 Rectal/Colostomy/Stool	.	05JUL11	Sunnybrook - Sunnybrook Campus
9	488432/H1602969	01 Rectal/Colostomy/Stool	.	07SEP11	North York - General Division
12	G434049	01 Rectal/Colostomy/Stool	.	26SEP11	Scarborough Hospital - Grace Division
13	H1237517	01 Rectal/Colostomy/Stool	.	28APR11	Scarborough Hospital - General Division
18	E2877801	01 Rectal/Colostomy/Stool	.	26APR12	William Osler - Etobicoke Hospital
21	N171456	01 Rectal/Colostomy/Stool	.	30JUL12	William Osler - Brampton Civic Hospital
22	N366484	01 Rectal/Colostomy/Stool	.	09AUG12	William Osler - Brampton Civic Hospital
28	2874118	01 Rectal/Colostomy/Stool	.	01SEP12	Sunnybrook - Sunnybrook Campus
45	E8223861	01 Rectal/Colostomy/Stool	.	08FEB13	William Osler - Etobicoke Hospital
62	N26450	01 Rectal/Colostomy/Stool	.	13FEB14	William Osler - Brampton Civic Hospital
66	N294833	01 Rectal/Colostomy/Stool	.	07JUL14	William Osler - Brampton Civic Hospital
69	N14468	01 Rectal/Colostomy/Stool	.	16JUL14	William Osler - Brampton Civic Hospital
74	YC-699647	01 Rectal/Colostomy/Stool	.	10MAR14	York Central Hospital
88	N569944	01 Rectal/Colostomy/Stool	.	20JAN15	William Osler - Brampton Civic Hospital
89	N260260	01 Rectal/Colostomy/Stool	.	20JAN15	William Osler - Brampton Civic Hospital
90	N291933	01 Rectal/Colostomy/Stool	.	07APR15	William Osler - Brampton Civic Hospital
91	N522537	01 Rectal/Colostomy/Stool	.	23APR15	William Osler - Brampton Civic Hospital

Obs	Code	CPEid	DOCDt	LastChartDt	DeathDt	DeathDtCode	Moved	Date_moved_out
92	0	C5022	18JUN2016	10JUN2015	.	99	.	.
96	0	C5028	26JUN2016	06AUG2015	.	99	.	.
101	0	C5038	11MAY2017	12AUG2015	.	99	.	.
102	0	C5039	18NOV2016	17AUG2015	.	99	.	.
103	0	C5041	11NOV2018	27MAR2017	.	99	.	.
105	0	C5044	25FEB2019	.	.	99	.	.
107	0	C5055	11JUL2017	14SEP2017	.	99	.	.
108	0	C5058	27NOV2016	01SEP2015	.	99	.	.
109	0	C5062	14MAR2017	25NOV2015	.	99	.	.
110	0	C5064	06JUN2017	03DEC2015	.	99	.	.
111	0	C5068	07NOV2017	05DEC2015	.	99	.	.
115	0	C6001	11FEB2017	09OCT2018	.	99	.	.
117	0	C6006	13OCT2016	01MAR2016	.	99	.	.
118	0	C6007	27JUL2017	01AUG2018	.	99	.	.
122	0	C6012	30JUL2016	18FEB2016	.	99	.	.
123	0	C6013	02JAN2017	29FEB2016	.	99	.	.
126	0	C6020	10MAR2017	16MAR2016	.	99	.	.
127	0	C6021	11MAR2017	18APR2017	.	99	.	.

Obs	MRN	SPECIMEN	ClinIsoDt	SpecimenDt	HOSPITAL
92	N42542	01 Rectal/Colostomy/Stool	.	06JUN15	William Osler - Brampton Civic Hospital
96	E8450432	01 Rectal/Colostomy/Stool	.	08JUN15	William Osler - Etobicoke Hospital
101	E8126214	01 Rectal/Colostomy/Stool	.	11JUL15	William Osler - Etobicoke Hospital
102	N264109	01 Rectal/Colostomy/Stool	.	17JUL15	William Osler - Brampton Civic Hospital
103	N374131	01 Rectal/Colostomy/Stool	.	03AUG15	William Osler - Brampton Civic Hospital
105	E7437650/H956776	01 Rectal/Colostomy/Stool	.	02SEP15	William Osler - Etobicoke Hospital
107	2598784	01 Rectal/Colostomy/Stool	.	03JUL15	Trillium Health Centre - Mississauga Site
108	E8476190	01 Rectal/Colostomy/Stool	.	20AUG15	William Osler - Etobicoke Hospital
109	0560955	01 Rectal/Colostomy/Stool	.	26NOV15	Toronto General Hospital
110	806-046-954	01 Rectal/Colostomy/Stool	.	01DEC15	Mount Sinai Hospital
111	3946874	01 Rectal/Colostomy/Stool	.	06DEC15	Toronto General Hospital
115	N225484	01 Rectal/Colostomy/Stool	.	25JAN16	William Osler - Brampton Civic Hospital
117	850624	01 Rectal/Colostomy/Stool	.	05FEB16	Trillium Health Centre - Mississauga Site
118	N451947	01 Rectal/Colostomy/Stool	.	10FEB16	William Osler - Brampton Civic Hospital
122	N394282	01 Rectal/Colostomy/Stool	.	18FEB16	William Osler - Brampton Civic Hospital
123	E3583747	01 Rectal/Colostomy/Stool	.	21FEB16	William Osler - Etobicoke Hospital
126	N131071	01 Rectal/Colostomy/Stool	.	15MAR16	William Osler - Brampton Civic Hospital
127	N680165	01 Rectal/Colostomy/Stool	.	24MAR16	William Osler - Brampton Civic Hospital

Obs	Code	CPEid	DOCDt	LastChartDt	DeathDt	DeathDtCode	Moved	Date_moved_out
129	0	C6023	28FEB2017	19MAY2016	.	99	.	.
131	0	C6025	19JUN2017	26FEB2017	.	99	.	.
132	0	C6029	11JAN2017	29NOV2018	.	99	.	.
139	0	C6039	06OCT2016	13SEP2016	.	99	.	.
140	0	C6041	11NOV2016	04MAY2016	.	99	.	.
142	0	C6043	04JUN2017	14MAY2016	.	99	.	.
144	0	C6056	11JUL2017	.	.	99	.	.
145	0	C6059	17AUG2017	.	.	99	.	.
150	0	C6069	14AUG2017	.	.	99	.	.
151	0	C6071	27SEP2017	29MAR2016	.	99	.	.
152	0	C6075	07OCT2017	11SEP2016	.	99	.	.
155	0	C6079	27SEP2017	12SEP2016	.	99	.	.
157	0	C6083	06FEB2018	07OCT2015	.	99	.	.
162	0	C6091	14SEP2018	31AUG2016	.	99	.	.
170	0	C6114(NON CPE CONVERSION)	23FEB2018	15FEB2018	.	99	.	.
173	0	C6121	09JUN2018	27JUL2016	.	99	.	.
174	0	C6124	18DEC2017	23FEB2017	.	99	.	.
175	0	C6138	05MAR2018	20FEB2017	.	99	.	.

Obs	MRN	SPECIMEN	ClinIsoDt	SpecimenDt	HOSPITAL
129	N6125	01 Rectal/Colostomy/Stool	.	24MAR16	William Osler - Brampton Civic Hospital
131	Y0957016	01 Rectal/Colostomy/Stool	.	21MAR16	Rouge Valley - Centenary Health Centre
132	N222285	01 Rectal/Colostomy/Stool	.	01APR16	William Osler - Brampton Civic Hospital
139	N555713	01 Rectal/Colostomy/Stool	.	19APR16	William Osler - Brampton Civic Hospital
140	E2972826	01 Rectal/Colostomy/Stool	.	02MAY16	William Osler - Etobicoke Hospital
142	N525702	01 Rectal/Colostomy/Stool	.	09MAY16	William Osler - Brampton Civic Hospital
144	N92941	01 Rectal/Colostomy/Stool	.	06JUN16	William Osler - Brampton Civic Hospital
145	N017627	01 Rectal/Colostomy/Stool	.	27JUN16	William Osler - Brampton Civic Hospital
150	3307621	01 Rectal/Colostomy/Stool	.	30JUL16	Toronto General Hospital
151	N290884	01 Rectal/Colostomy/Stool	.	29AUG16	William Osler - Brampton Civic Hospital
152	E8023633	01 Rectal/Colostomy/Stool	.	08SEP16	William Osler - Etobicoke Hospital
155	N653881	01 Rectal/Colostomy/Stool	.	12SEP16	William Osler - Brampton Civic Hospital
157	806090623	01 Rectal/Colostomy/Stool	.	22SEP16	Mount Sinai Hospital
162	3732932	01 Rectal/Colostomy/Stool	.	25JUN15	Sunnybrook - Sunnybrook Campus
170	H1004966	01 Rectal/Colostomy/Stool	.	29NOV16	Scarborough Hospital - General Division
173	N729564/H1565124	01 Rectal/Colostomy/Stool	.	21DEC16	William Osler - Brampton Civic Hospital
174	E8529909	01 Rectal/Colostomy/Stool	.	22DEC16	William Osler - Etobicoke Hospital
175	E3405024	01 Rectal/Colostomy/Stool	.	09AUG16	William Osler - Etobicoke Hospital

Obs	Code	CPEid	DOCDt	LastChartDt	DeathDt	DeathDtCode	Moved	Date_moved_out
184	0	C7003	19MAR2018	18JUN2017	.	99	.	.
185	0	C7007	11FEB2019	.	.	99	.	.
186	0	C7009	24JUL2018	06MAY2017	.	99	.	.
188	0	C7014	01NOV2018	.	.	99	98	01JUN2017
193	0	C7029	17APR2018	24MAR2017	.	99	.	.
197	0	C7037	01AUG2018	04APR2017	.	99	.	.
198	0	C7038	08MAR2018	19APR2017	.	99	.	.
205	0	C7055	28FEB2019	31MAY2017	.	99	.	.
207	0	C7060	25APR2018	23JUN2017	.	99	.	.
210	0	C7064	13APR2018	03JUN2017	.	99	.	.
211	0	C7069	11NOV2018	12JUN2017	.	99	98	15JUL2018
212	0	C7072	17APR2018	05JUL2017	.	99	.	.
216	0	C7084	21AUG2018	19AUG2017	.	99	.	.
219	0	C7088	02AUG2018	16AUG2017	.	99	.	.
220	0	C7089	14JAN2019	22AUG2017	.	99	.	.
222	0	C7099	02AUG2018	16SEP2017	.	99	.	.
223	0	C7100	09JAN2019	23FEB2017	.	99	.	.
224	0	C7102	23MAY2018	.	.	99	.	.

Obs	MRN	SPECIMEN	ClinIsoDt	SpecimenDt	HOSPITAL
184	N298705	01 Rectal/Colostomy/Stool	.	08JAN17	William Osler - Brampton Civic Hospital
185	SJRAMB-91385	01 Rectal/Colostomy/Stool	.	14FEB17	St. John's Rehab
186	J1683374	01 Rectal/Colostomy/Stool	.	14FEB17	St. Michael's Hospital
188	N578055	01 Rectal/Colostomy/Stool	.	23FEB17	William Osler - Brampton Civic Hospital
193	N326105	01 Rectal/Colostomy/Stool	.	24MAR17	William Osler - Brampton Civic Hospital
197	N216688	01 Rectal/Colostomy/Stool	.	03APR17	William Osler - Brampton Civic Hospital
198	E8397409	01 Rectal/Colostomy/Stool	.	20MAR17	William Osler - Etobicoke Hospital
205	N143604	01 Rectal/Colostomy/Stool	.	07MAY17	William Osler - Brampton Civic Hospital
207	N699373	01 Rectal/Colostomy/Stool	.	17MAY17	William Osler - Brampton Civic Hospital
210	804460657	01 Rectal/Colostomy/Stool	.	03JUN17	Mount Sinai Hospital
211	1487871	01 Rectal/Colostomy/Stool	.	09JUN17	Toronto East General & Orthopaedic Hospital
212	N757304	01 Rectal/Colostomy/Stool	.	28JUN17	William Osler - Brampton Civic Hospital
216	N424843	01 Rectal/Colostomy/Stool	.	10AUG17	William Osler - Brampton Civic Hospital
219	806163297	01 Rectal/Colostomy/Stool	.	15AUG17	Mount Sinai Hospital
220	J2852410	01 Rectal/Colostomy/Stool	.	21AUG17	St. Michael's Hospital
222	N472103	01 Rectal/Colostomy/Stool	.	14SEP17	William Osler - Brampton Civic Hospital
223	G0873248	01 Rectal/Colostomy/Stool	.	12SEP17	Scarborough Hospital - Grace Division
224	N272617	01 Rectal/Colostomy/Stool	.	21SEP17	William Osler - Brampton Civic Hospital

Obs	Code	CPEid	DOCDt	LastChartDt	DeathDt	DeathDtCode	Moved	Date_moved_out
225	0	C7104	06MAY2018	25NOV2017	.	99	.	.
226	0	C7109	26APR2018	22NOV2017	.	99	98	01MAR2018
227	0	C7110	08NOV2018	21OCT2017	.	99	.	.
230	0	C7116	10MAY2018	21APR2017	.	99	.	.
232	0	C7118	20JUN2018	16APR2018	.	99	.	.
233	0	C7120	04JUN2018	03SEP2017	.	99	.	.
234	0	C7121	17APR2018	01MAY2017	.	99	.	.
237	0	C7130	10APR2019	27NOV2018	.	99	.	.
240	0	C7143	03OCT2018	12JAN2018	.	99	.	.
241	0	C7147	08MAR2019	10JAN2018	.	99	.	.
242	0	C7159	13AUG2018	09MAR2016	.	99	.	.
245	0	C7164	23JAN2019	.	.	99	.	.
247	0	C7166	02APR2019	24JUL2018	.	99	.	.
251	0	C7174	01NOV2018	.	.	99	.	.
253	0	C7176	14SEP2017	.	.	99	.	.
254	0	C7178	27DEC2017	.	.	99	.	.
255	0	C8001	20OCT2018	11JAN2018	.	99	.	.
258	0	C8004	31OCT2018	25JAN2018	.	99	.	.

Obs	MRN	SPECIMEN	ClinIsoDt	SpecimenDt	HOSPITAL
225	2759801	01 Rectal/Colostomy/Stool	.	25SEP17	Hospital for Sick Children
226	E8391880	01 Rectal/Colostomy/Stool	.	10OCT17	William Osler - Etobicoke Hospital
227	N661749	01 Rectal/Colostomy/Stool	.	19OCT17	William Osler - Brampton Civic Hospital
230	805181361	01 Rectal/Colostomy/Stool	.	18APR17	Mount Sinai Hospital
232	4435511	01 Rectal/Colostomy/Stool	.	08FEB17	Toronto General Hospital
233	2017902	01 Rectal/Colostomy/Stool	.	01MAR17	Toronto General Hospital
234	2621072	01 Rectal/Colostomy/Stool	.	14APR17	Toronto General Hospital
237	806179039	01 Rectal/Colostomy/Stool	.	27NOV17	Mount Sinai Hospital
240	4257998	01 Rectal/Colostomy/Stool	.	24OCT17	Toronto General Hospital
241	N480477	01 Rectal/Colostomy/Stool	.	18DEC17	William Osler - Brampton Civic Hospital
242	M00042132	01 Rectal/Colostomy/Stool	.	16FEB17	Markham Stouffville Hospital
245	3195234	01 Rectal/Colostomy/Stool	.	20JUL17	Sunnybrook - Sunnybrook Campus
247	3044270	01 Rectal/Colostomy/Stool	.	20NOV17	Sunnybrook - Sunnybrook Campus
251	54250	01 Rectal/Colostomy/Stool	.	24NOV17	Markham Stouffville Hospital
253	673509	01 Rectal/Colostomy/Stool	.	14SEP17	Markham Stouffville Hospital
254	4516564	01 Rectal/Colostomy/Stool	.	27DEC17	Toronto Rehab - University Centre
255	806177622	01 Rectal/Colostomy/Stool	.	11JAN18	Mount Sinai Hospital
258	N272826	01 Rectal/Colostomy/Stool	.	22JAN18	William Osler - Brampton Civic Hospital

Obs	Code	CPEid	DOCDt	LastChartDt	DeathDt	DeathDtCode	Moved	Date_moved_out
261	0	C8012	14SEP2018	02AUG2018	.	99	.	.
262	0	C8013	12APR2019	.	.	99	.	.
264	0	C8020	06JAN2019	26FEB2018	.	99	.	.
265	0	C8022	27SEP2018	27FEB2018	.	99	98	15DEC2018
267	0	C8024	10DEC2018	05MAR2018	.	99	.	.
268	0	C8025	22MAR2019	.	.	99	.	.
269	0	C8026	12MAR2019	02MAR2018	.	99	.	.
270	0	C8030	04DEC2018	27MAR2018	.	99	.	.
271	0	C8031	17APR2019	06MAR2018	.	99	.	.
273	0	C8034	03SEP2018	14AUG2018	.	99	.	.
278	0	C8049	17JAN2019	04APR2018	.	99	.	.
280	0	C8059	11FEB2019	09MAY2018	.	99	.	.
281	0	C8060	04MAR2019	23APR2018	.	99	.	.
282	0	C8063	03FEB2019	.	.	99	.	.
283	0	C8064	23OCT2018	01MAY2018	18OCT2018	1	.	.
284	0	C8065	07MAY2018	.	.	99	.	.
286	0	C8069	28FEB2019	28JUL2018	.	99	.	.
288	0	C8077	29MAR2019	28JUN2018	.	99	.	.

Obs	MRN	SPECIMEN	ClinIsoDt	SpecimenDt	HOSPITAL
261	Y0771598	01 Rectal/Colostomy/Stool	.	29JAN18	Rouge Valley - Centenary Health Centre
262	0726022	01 Rectal/Colostomy/Stool	.	30JAN18	Rouge Valley - Ajax & Pickering
264	3075069	01 Rectal/Colostomy/Stool	.	23FEB18	St. Michael's Hospital
265		01 Rectal/Colostomy/Stool	.	24FEB18	St. Michael's Hospital
267	N330763	01 Rectal/Colostomy/Stool	.	05MAR18	William Osler - Brampton Civic Hospital
268	N793224/4550975	01 Rectal/Colostomy/Stool	.	05MAR18	William Osler - Brampton Civic Hospital
269	N200736	01 Rectal/Colostomy/Stool	.	01MAR18	William Osler - Brampton Civic Hospital
270	H000683665	01 Rectal/Colostomy/Stool	.	26FEB18	Humber River - Wilson Site
271	H1621262	01 Rectal/Colostomy/Stool	.	01MAR18	Humber River - Wilson Site
273	291077	01 Rectal/Colostomy/Stool	.	07MAR18	Markham Stouffville Hospital
278	N000177278	01 Rectal/Colostomy/Stool	.	03APR18	William Osler - Brampton Civic Hospital
280	2323386	01 Rectal/Colostomy/Stool	.	18APR18	Trillium Health Centre - Mississauga Site
281	N732077	01 Rectal/Colostomy/Stool	.	22APR18	William Osler - Brampton Civic Hospital
282	316729	01 Rectal/Colostomy/Stool	.	01MAY18	Markham Stouffville Hospital
283	OT644818	01 Rectal/Colostomy/Stool	.	01MAY18	Milton hospital
284		01 Rectal/Colostomy/Stool	.	07MAY18	LifeLabs
286	N000568900	01 Rectal/Colostomy/Stool	.	08MAY18	William Osler - Brampton Civic Hospital
288	N000576555	01 Rectal/Colostomy/Stool	.	14JUN18	William Osler - Brampton Civic Hospital

Obs	Code	CPEid	DOCDt	LastChartDt	DeathDt	DeathDtCode	Moved	Date_moved_out
290	0	C8085	20FEB2019	.	.	99	.	.
291	0	C8086	15NOV2018	.	.	99	.	.
292	0	C8089	16APR2019	.	.	99	.	.
294	0	C8101	04FEB2019	.	.	99	.	.
295	0	C8102	26JUL2018	.	.	99	98	15SEP2018
296	0	C8103	10APR2019	.	.	99	.	.
297	0	C8104	11JAN2019	.	.	99	.	.
298	0	C8105	15FEB2019	.	.	99	.	.
299	0	C8107	17APR2019	14AUG2018	.	99	.	.
300	0	C8108	23JAN2019	.	.	99	.	.
301	0	C8119	15FEB2019	.	.	99	.	.
302	0	C8120	17AUG2018	.	.	99	.	.
303	0	C8121	26MAR2018	.	.	99	.	.
304	0	C8122	23APR2018	.	.	99	98	01DEC2018
306	0	C8125	31AUG2018	.	.	99	.	.
308	0	C8131	31OCT2018	.	.	99	98	01OCT2018
309	0	C8132	08JAN2019	27SEP2018	.	99	.	.
310	0	C8133	12APR2019	21AUG2018	.	99	.	.

Obs	MRN	SPECIMEN	ClinIsoDt	SpecimenDt	HOSPITAL
290	0893030	01 Rectal/Colostomy/Stool	.	21MAR18	Toronto Rehab - University Centre
291	806215813	01 Rectal/Colostomy/Stool	.	29MAY18	Mount Sinai Hospital
292	H1141087	01 Rectal/Colostomy/Stool	.	22JUN18	Scarborough Hospital - Grace Division
294	1230828	01 Rectal/Colostomy/Stool	.	26JUL18	North York - General Division
295	E008586419	01 Rectal/Colostomy/Stool	.	23JUL18	William Osler - Etobicoke Hospital
296	3268863	01 Rectal/Colostomy/Stool	.	24JUL18	0
297	2407341	01 Rectal/Colostomy/Stool	.	25JUL18	Sunnybrook - Arthritic Clinic
298	2671110	01 Rectal/Colostomy/Stool	.	09AUG18	Sunnybrook - Sunnybrook Campus
299	806182407	01 Rectal/Colostomy/Stool	.	09AUG18	Mount Sinai Hospital
300	J2677432	01 Rectal/Colostomy/Stool	.	09AUG18	St. Michael's Hospital
301	806231468	01 Rectal/Colostomy/Stool	.	20AUG18	Mount Sinai Hospital
302	J3107177	01 Rectal/Colostomy/Stool	.	17AUG18	St. Michael's Hospital
303	1081533	01 Rectal/Colostomy/Stool	.	26MAR18	Sunnybrook - Sunnybrook Campus
304	3242259	01 Rectal/Colostomy/Stool	.	03FEB18	Sunnybrook - Sunnybrook Campus
306	806234176	01 GROIN	.	31AUG18	Mount Sinai Hospital
308	E8590151	01 Rectal/Colostomy/Stool	.	31AUG18	William Osler - Etobicoke Hospital
309	N577180	01 Rectal/Colostomy/Stool	.	27AUG18	William Osler - Brampton Civic Hospital
310	N818807	01 Rectal/Colostomy/Stool	.	17AUG18	William Osler - Brampton Civic Hospital

Obs	Code	CPEid	DOCDt	LastChartDt	DeathDt	DeathDtCode	Moved	Date_moved_out
311	0	C8137	18APR2019	23AUG2018	.	99	.	.
312	0	C8138	17APR2019	23AUG2018	.	99	.	.
313	0	C8139	03APR2019	09OCT2018	.	99	.	.
315	0	C8151	26DEC2018	.	.	99	.	.
316	0	C8156	04FEB2019	19NOV2018	.	99	.	.
317	0	C8157	07NOV2018	.	.	99	.	.
318	0	C8162	09APR2019	.	.	99	.	.
320	0	C8164	16APR2019	07MAR2018	.	99	.	.
321	0	C8168	01JUN2018	.	.	99	.	.
322	0	C8169	11JUN2018	.	.	99	.	.
323	0	C8171	29JUN2018	.	.	99	.	.
324	0	C8172	14APR2019	22JUL2018	.	99	.	.
326	0	C8178	23APR2019	.	.	99	.	.
327	0	C8180	18MAR2019	.	.	99	.	.
328	0	C8182	16JAN2019	.	.	99	.	.
329	0	C8184	04APR2019	.	.	99	.	.
330	0	C8186	01MAR2019	.	.	99	.	.
331	0	C8190	01JAN2019	.	.	99	.	.

Obs	MRN	SPECIMEN	ClinIsoDt	SpecimenDt	HOSPITAL
311	806-226-195	01 Rectal	.	26JUL18	Mount Sinai Hospital
312	806226196	01 Rectal	.	26JUL18	Mount Sinai Hospital
313	N000316434	01 Rectal	.	30SEP18	William Osler - Brampton Civic Hospital
315	G0812162	01 Rectal/Colostomy/Stool	.	24OCT18	Scarborough Hospital - Grace Division
316	2051336	01 Rectal	.	25OCT18	North York - General Division
317	4598671	01 Rectal	.	07NOV18	Toronto General Hospital
318	E007788771	01 Rectal	.	05NOV18	William Osler - Etobicoke Hospital
320	UT0147531	01 Rectal	.	05MAR18	Oakville Trafalgar Memorial Hospital
321	v0205514	01 Rectal/Colostomy/Stool	.	01JUN18	Rouge Valley - Ajax & Pickering
322	MD0284282	01 Rectal	.	11JUN18	Milton District Hospital
323		01 Rectal/Colostomy/Stool	.	29JUN18	Rouge Valley - Ajax & Pickering
324	OT0517254	01 Rectal	.	20JUL18	Oakville Trafalgar Memorial Hospital
326	N741525	01 Rectal	.	20NOV18	William Osler - Brampton Civic Hospital
327	G0960894	01 Rectal	.	29NOV18	Scarborough Hospital - General Division
328	456374	01 Rectal	.	07DEC18	North York - General Division
329	2776298	01 Rectal	.	23DEC18	Sunnybrook Health Science Centre
330	N000481926	01 Rectal	.	14DEC18	William Osler - Brampton Civic Hospital
331	N000213767	01 Rectal/Colostomy/Stool	.	13NOV18	William Osler - Brampton Civic Hospital

Obs	Code	CPEid	DOCDt	LastChartDt	DeathDt	DeathDtCode	Moved	Date_moved_out
332	0	C8191	26MAR2019	.	.	99	.	.
339	1	C3012	22SEP2015	.	.	99	.	.
341	1	C3036	30JUN2013	24JUN2013	.	99	.	.
342	0	C4063	21JAN2019	.	.	99	.	.
343	1	C4075	04JUL2018	.	.	99	.	.
344	1	C5026	30JUL2015	.	.	99	.	.
345	1	C5031	11MAR2019	.	.	99	.	.
348	1	C6145	11AUG2016	.	.	99	.	.
350	1	C7025	04OCT2017	.	.	99	.	.
353	1	C7137	05APR2019	.	.	99	.	.
355	1	C8068	27FEB2019	.	.	99	.	.

Obs	MRN	SPECIMEN	ClinIsoDt	SpecimenDt	HOSPITAL
332	N000069364	01 Rectal/Colostomy/Stool	.	13NOV18	William Osler - Brampton Civic Hospital
339	N545086	01 Rectal/Colostomy/Stool	06JAN17	08DEC13	William Osler - Brampton Civic Hospital
341	3712560	01 Rectal/Colostomy/Stool	27JUN13	14JUN13	Toronto Western Hospital
342	J658284	01 Rectal/Colostomy/Stool	.	29OCT14	St. Michael's Hospital
343	2587911/BLVW-68402	01 Rectal/Colostomy/Stool	11JUL16	05MAY14	Hospital for Sick Children
344	3083274	01 Rectal/Colostomy/Stool	10JUL15	08JUN15	Sunnybrook - Sunnybrook Campus
345	N261113	01 Rectal/Colostomy/Stool	29JUN15	15JUN15	Headwaters Health Care Centre
348	3150720	01 Rectal/Colostomy/Stool	04JUL16	27JUN16	Sunnybrook - Sunnybrook Campus
350	E8537280	01 Rectal/Colostomy/Stool	24APR17	20MAR17	William Osler - Etobicoke Hospital
353	N778944	01 Rectal/Colostomy/Stool	13DEC17	28NOV17	William Osler - Brampton Civic Hospital
355	3262744	01 Rectal/Colostomy/Stool	30JUN18	12MAY18	Sunnybrook - Sunnybrook Campus

Obs	Code	ClinIsoDt	DeathDt	Date_moved_out	enddt
1	0	.	.	.	28SEP2019
2	0	.	.	.	28SEP2019
3	0	.	.	.	28SEP2019
4	0	.	.	.	28SEP2019
5	0	.	.	.	28SEP2019
6	0	.	.	.	28SEP2019
7	0	.	.	.	28SEP2019
8	0	.	.	.	28SEP2019
9	0	.	.	.	28SEP2019
10	0	.	.	.	28SEP2019
11	0	.	.	.	28SEP2019
12	0	.	.	.	28SEP2019
13	0	.	.	.	28SEP2019
14	0	.	.	.	28SEP2019
15	0	.	.	.	28SEP2019
16	0	.	27FEB2012	.	27FEB2012
17	0	.	02DEC2012	.	02DEC2012
18	0	.	.	.	28SEP2019
19	0	.	21MAY2012	.	21MAY2012
20	0	.	13JUN2012	.	13JUN2012
21	0	.	.	.	28SEP2019
22	0	.	.	.	28SEP2019
23	0	.	.	.	28SEP2019
24	0	.	.	.	28SEP2019
25	0	.	.	.	28SEP2019
26	0	.	18JUN2012	.	18JUN2012
27	0	.	.	.	28SEP2019
28	0	.	.	.	28SEP2019
29	0	.	.	.	28SEP2019
30	0	.	.	.	28SEP2019
31	0	.	.	.	28SEP2019
32	0	.	.	.	28SEP2019
33	0	.	.	.	28SEP2019
34	0	.	.	.	28SEP2019
35	0	.	.	.	28SEP2019
36	0	.	.	.	28SEP2019
37	0	.	25DEC2012	.	25DEC2012
38	0	.	.	.	28SEP2019

Obs	Code	ClinIsoDt	DeathDt	Date_moved_out	enddt
39	0	.	04JUN2013	.	04JUN2013
40	0	.	.	.	28SEP2019
41	0	.	16DEC2013	.	16DEC2013
42	0	.	.	.	28SEP2019
43	0	.	07MAR2018	.	07MAR2018
44	0	.	24JAN2015	.	24JAN2015
45	0	.	.	.	28SEP2019
46	0	.	12MAR2013	.	12MAR2013
47	0	.	.	.	28SEP2019
48	0	.	.	.	28SEP2019
49	0	.	01JUN2014	.	01JUN2014
50	0	.	.	.	28SEP2019
51	0	.	.	.	28SEP2019
52	0	.	21MAY2016	.	21MAY2016
53	0	.	.	.	28SEP2019
54	0	.	31OCT2015	.	31OCT2015
55	0	.	.	.	28SEP2019
56	0	.	.	.	28SEP2019
57	0	.	28FEB2014	.	28FEB2014
58	0	.	.	.	28SEP2019
59	0	.	.	.	28SEP2019
60	0	.	.	.	28SEP2019
61	0	.	.	.	28SEP2019
62	0	.	.	.	28SEP2019
63	0	.	.	.	28SEP2019
64	0	.	01FEB2019	.	01FEB2019
65	0	.	.	.	28SEP2019
66	0	.	.	.	28SEP2019
67	0	.	.	.	28SEP2019
68	1	30NOV15	.	.	30NOV2015
69	0	.	.	.	28SEP2019
70	0	.	01SEP2014	.	01SEP2014
71	0	.	.	.	28SEP2019
72	0	.	.	.	28SEP2019
73	0	.	.	.	28SEP2019
74	0	.	.	.	28SEP2019
75	0	.	.	.	28SEP2019
76	0	.	05MAR2013	.	05MAR2013

Obs	Code	ClinIsoDt	DeathDt	Date_moved_out	enddt
77	0	.	.	.	28SEP2019
78	0	.	06OCT2014	.	06OCT2014
79	0	.	.	.	28SEP2019
80	0	.	07JUN2015	.	07JUN2015
81	0	.	.	.	28SEP2019
82	0	.	.	.	28SEP2019
83	0	.	20APR2015	.	20APR2015
84	0	.	13FEB2015	.	13FEB2015
85	0	.	.	.	28SEP2019
86	0	.	21FEB2015	.	21FEB2015
87	0	.	23JAN2015	.	23JAN2015
88	0	.	.	.	28SEP2019
89	0	.	.	.	28SEP2019
90	0	.	.	.	28SEP2019
91	0	.	.	.	28SEP2019
92	0	.	.	.	28SEP2019
93	0	.	22JUN2015	.	22JUN2015
94	0	.	20FEB2016	.	20FEB2016
95	0	.	15JUN2015	.	15JUN2015
96	0	.	.	.	28SEP2019
97	0	.	16MAY2016	.	16MAY2016
98	0	.	19NOV2015	.	19NOV2015
99	0	.	29JUL2015	.	29JUL2015
100	0	.	.	05NOV2015	05NOV2015
101	0	.	.	.	28SEP2019
102	0	.	.	.	28SEP2019
103	0	.	.	.	28SEP2019
104	0	.	.	.	28SEP2019
105	0	.	.	.	28SEP2019
106	0	.	.	18NOV2015	18NOV2015
107	0	.	.	.	28SEP2019
108	0	.	.	.	28SEP2019
109	0	.	.	.	28SEP2019
110	0	.	.	.	28SEP2019
111	0	.	.	.	28SEP2019
112	0	.	10JUL2016	.	10JUL2016
113	0	.	18OCT2015	.	18OCT2015
114	0	.	16OCT2018	.	16OCT2018

Obs	Code	ClinIsoDt	DeathDt	Date_moved_out	enddt
115	0	.	.	.	28SEP2019
116	0	.	.	.	28SEP2019
117	0	.	.	.	28SEP2019
118	0	.	.	.	28SEP2019
119	0	.	13JUN2016	.	13JUN2016
120	0	.	14MAY2016	.	14MAY2016
121	0	.	05MAR2016	.	05MAR2016
122	0	.	.	.	28SEP2019
123	0	.	.	.	28SEP2019
124	0	.	.	.	28SEP2019
125	0	.	.	.	28SEP2019
126	0	.	.	.	28SEP2019
127	0	.	.	.	28SEP2019
128	0	.	24DEC2016	.	24DEC2016
129	0	.	.	.	28SEP2019
130	0	.	07JAN2017	.	07JAN2017
131	0	.	.	.	28SEP2019
132	0	.	.	.	28SEP2019
133	0	.	.	.	28SEP2019
134	0	.	13MAY2016	.	13MAY2016
135	0	.	28APR2016	.	28APR2016
136	0	.	31MAR2019	.	31MAR2019
137	0	.	.	.	28SEP2019
138	0	.	21MAY2018	.	21MAY2018
139	0	.	.	.	28SEP2019
140	0	.	.	.	28SEP2019
141	0	.	15MAY2016	.	15MAY2016
142	0	.	.	.	28SEP2019
143	0	.	31MAY2018	.	31MAY2018
144	0	.	.	.	28SEP2019
145	0	.	.	.	28SEP2019
146	0	.	.	.	28SEP2019
147	0	.	.	.	28SEP2019
148	0	.	31MAY2017	.	31MAY2017
149	0	.	.	.	28SEP2019
150	0	.	.	.	28SEP2019
151	0	.	.	.	28SEP2019
152	0	.	.	.	28SEP2019

Obs	Code	ClinIsoDt	DeathDt	Date_moved_out	enddt
153	0	.	.	.	28SEP2019
154	1	20OCT17	10AUG2017	.	20OCT2017
155	0	.	.	.	28SEP2019
156	0	.	.	.	28SEP2019
157	0	.	.	.	28SEP2019
158	0	.	.	.	28SEP2019
159	0	.	25APR2017	.	25APR2017
160	0	.	27MAY2016	.	27MAY2016
161	0	.	.	.	28SEP2019
162	0	.	.	.	28SEP2019
163	0	.	19OCT2016	.	19OCT2016
164	0	.	.	.	28SEP2019
165	0	.	13JUN2017	.	13JUN2017
166	0	.	24DEC2016	.	24DEC2016
167	0	.	.	.	28SEP2019
168	0	.	04SEP2016	.	04SEP2016
169	0	.	.	14NOV2016	14NOV2016
170	0	.	.	.	28SEP2019
171	0	.	.	.	28SEP2019
172	0	.	13FEB2017	.	13FEB2017
173	0	.	.	.	28SEP2019
174	0	.	.	.	28SEP2019
175	0	.	.	.	28SEP2019
176	0	.	.	23AUG2017	23AUG2017
177	0	.	.	.	28SEP2019
178	0	.	.	24OCT2016	24OCT2016
179	0	.	.	.	28SEP2019
180	0	.	.	.	28SEP2019
181	0	.	20NOV2016	.	20NOV2016
182	0	.	14OCT2016	.	14OCT2016
183	0	.	.	.	28SEP2019
184	0	.	.	.	28SEP2019
185	0	.	.	.	28SEP2019
186	0	.	.	.	28SEP2019
187	0	.	.	.	28SEP2019
188	0	.	.	01JUN2017	01JUN2017
189	0	.	.	.	28SEP2019
190	0	.	20MAR2017	.	20MAR2017

Obs	Code	ClinIsoDt	DeathDt	Date_moved_out	enddt
191	0	.	.	.	28SEP2019
192	0	.	.	.	28SEP2019
193	0	.	.	.	28SEP2019
194	0	.	.	.	28SEP2019
195	0	.	.	.	28SEP2019
196	0	.	09APR2017	.	09APR2017
197	0	.	.	.	28SEP2019
198	0	.	.	.	28SEP2019
199	0	.	29APR2017	.	29APR2017
200	0	.	.	.	28SEP2019
201	0	.	28APR2017	.	28APR2017
202	0	.	.	.	28SEP2019
203	0	.	28APR2017	.	28APR2017
204	0	.	.	.	28SEP2019
205	0	.	.	.	28SEP2019
206	0	.	05JUN2017	.	05JUN2017
207	0	.	.	.	28SEP2019
208	0	.	.	.	28SEP2019
209	0	.	20JUL2017	.	20JUL2017
210	0	.	.	.	28SEP2019
211	0	.	.	15JUL2018	15JUL2018
212	0	.	.	.	28SEP2019
213	0	.	03APR2018	.	03APR2018
214	0	.	12DEC2018	.	12DEC2018
215	0	.	15DEC2017	.	15DEC2017
216	0	.	.	.	28SEP2019
217	0	.	19AUG2017	.	19AUG2017
218	0	.	15MAY2018	.	15MAY2018
219	0	.	.	.	28SEP2019
220	0	.	.	.	28SEP2019
221	0	.	.	.	28SEP2019
222	0	.	.	.	28SEP2019
223	0	.	.	.	28SEP2019
224	0	.	.	.	28SEP2019
225	0	.	.	.	28SEP2019
226	0	.	.	01MAR2018	01MAR2018
227	0	.	.	.	28SEP2019
228	0	.	.	.	28SEP2019

Obs	Code	ClinIsoDt	DeathDt	Date_moved_out	enddt
229	0	.	.	.	28SEP2019
230	0	.	.	.	28SEP2019
231	0	.	.	.	28SEP2019
232	0	.	.	.	28SEP2019
233	0	.	.	.	28SEP2019
234	0	.	.	.	28SEP2019
235	0	.	.	01DEC2017	01DEC2017
236	0	.	.	.	28SEP2019
237	0	.	.	.	28SEP2019
238	0	.	.	29NOV2017	29NOV2017
239	0	.	.	.	28SEP2019
240	0	.	.	.	28SEP2019
241	0	.	.	.	28SEP2019
242	0	.	.	.	28SEP2019
243	0	.	14MAR2017	.	14MAR2017
244	0	.	12MAY2018	.	12MAY2018
245	0	.	.	.	28SEP2019
246	0	.	31DEC2017	.	31DEC2017
247	0	.	.	.	28SEP2019
248	0	.	.	28MAR2017	28MAR2017
249	0	.	17APR2017	.	17APR2017
250	0	.	30APR2017	.	30APR2017
251	0	.	.	.	28SEP2019
252	0	.	20AUG2017	.	20AUG2017
253	0	.	.	.	28SEP2019
254	0	.	.	.	28SEP2019
255	0	.	.	.	28SEP2019
256	0	.	20FEB2018	.	20FEB2018
257	0	.	.	.	28SEP2019
258	0	.	.	.	28SEP2019
259	0	.	.	.	28SEP2019
260	0	.	22MAR2018	.	22MAR2018
261	0	.	.	.	28SEP2019
262	0	.	.	.	28SEP2019
263	0	.	.	.	28SEP2019
264	0	.	.	.	28SEP2019
265	0	.	.	15DEC2018	15DEC2018
266	0	.	28MAR2018	.	28MAR2018

Obs	Code	ClinIsoDt	DeathDt	Date_moved_out	enddt
267	0	.	.	.	28SEP2019
268	0	.	.	.	28SEP2019
269	0	.	.	.	28SEP2019
270	0	.	.	.	28SEP2019
271	0	.	.	.	28SEP2019
272	0	.	.	.	28SEP2019
273	0	.	.	.	28SEP2019
274	0	.	01NOV2018	.	01NOV2018
275	0	.	25MAR2018	.	25MAR2018
276	0	.	.	.	28SEP2019
277	0	.	.	.	28SEP2019
278	0	.	.	.	28SEP2019
279	0	.	06AUG2018	.	06AUG2018
280	0	.	.	.	28SEP2019
281	0	.	.	.	28SEP2019
282	0	.	.	.	28SEP2019
283	0	.	18OCT2018	.	18OCT2018
284	0	.	.	.	28SEP2019
285	1	07JUN18	15JUN2018	.	07JUN2018
286	0	.	.	.	28SEP2019
287	0	.	.	.	28SEP2019
288	0	.	.	.	28SEP2019
289	0	.	01AUG2018	.	01AUG2018
290	0	.	.	.	28SEP2019
291	0	.	.	.	28SEP2019
292	0	.	.	.	28SEP2019
293	0	.	.	01AUG2018	01AUG2018
294	0	.	.	.	28SEP2019
295	0	.	.	15SEP2018	15SEP2018
296	0	.	.	.	28SEP2019
297	0	.	.	.	28SEP2019
298	0	.	.	.	28SEP2019
299	0	.	.	.	28SEP2019
300	0	.	.	.	28SEP2019
301	0	.	.	.	28SEP2019
302	0	.	.	.	28SEP2019
303	0	.	.	.	28SEP2019
304	0	.	.	01DEC2018	01DEC2018

Obs	Code	ClinIsoDt	DeathDt	Date_moved_out	enddt
305	0	.	.	01SEP2018	01SEP2018
306	0	.	.	.	28SEP2019
307	0	.	16AUG2018	.	16AUG2018
308	0	.	.	01OCT2018	01OCT2018
309	0	.	.	.	28SEP2019
310	0	.	.	.	28SEP2019
311	0	.	.	.	28SEP2019
312	0	.	.	.	28SEP2019
313	0	.	.	.	28SEP2019
314	0	.	20DEC2018	.	20DEC2018
315	0	.	.	.	28SEP2019
316	0	.	.	.	28SEP2019
317	0	.	.	.	28SEP2019
318	0	.	.	.	28SEP2019
319	0	.	21NOV2018	.	21NOV2018
320	0	.	.	.	28SEP2019
321	0	.	.	.	28SEP2019
322	0	.	.	.	28SEP2019
323	0	.	.	.	28SEP2019
324	0	.	.	.	28SEP2019
325	0	.	27NOV2018	.	27NOV2018
326	0	.	.	.	28SEP2019
327	0	.	.	.	28SEP2019
328	0	.	.	.	28SEP2019
329	0	.	.	.	28SEP2019
330	0	.	.	.	28SEP2019
331	0	.	.	.	28SEP2019
332	0	.	.	.	28SEP2019
333	0	.	24DEC2018	.	24DEC2018
334	0	.	13OCT2009	.	13OCT2009
335	1	31AUG11	.	.	31AUG2011
336	1	08APR12	13MAY2012	.	08APR2012
337	1	26NOV12	05SEP2017	.	26NOV2012
338	1	05SEP13	.	.	05SEP2013
339	1	06JAN17	.	.	06JAN2017
340	1	17APR13	11SEP2013	.	17APR2013
341	1	27JUN13	.	.	27JUN2013
342	0	.	.	.	28SEP2019

Obs	Code	ClinIsoDt	DeathDt	Date_moved_out	enddt
343	1	11JUL16	.	.	11JUL2016
344	1	10JUL15	.	.	10JUL2015
345	1	29JUN15	.	.	29JUN2015
346	1	09JUL15	.	.	09JUL2015
347	1	30MAY16	07JUN2016	.	30MAY2016
348	1	04JUL16	.	.	04JUL2016
349	1	02MAR17	10MAR2017	.	02MAR2017
350	1	24APR17	.	.	24APR2017
351	1	15NOV17	23NOV2017	.	15NOV2017
352	1	02DEC17	03FEB2018	.	02DEC2017
353	1	13DEC17	.	.	13DEC2017
354	1	10APR18	19APR2018	.	10APR2018
355	1	30JUN18	.	.	30JUN2018
356	1	07OCT18	25DEC2018	.	07OCT2018
357	1	10OCT18	26OCT2018	.	10OCT2018
358	1	12NOV18	02NOV2018	.	12NOV2018
359	1	09JAN19	02FEB2019	.	09JAN2019

Obs	CPEid	survtime
1	C2011	1
2	C7136	1
3	C8177	1
4	C5072	2
5	C4001	3
6	C5007	3
7	C6155	3
8	C7015	3
9	C5027	4
10	C7052	4
11	C6046	4
12	C6150	5
13	C7129	5
14	C8052	5
15	C2009	6
16	C7036	6
17	C7167	6
18	C1019	6
19	C6112	7
20	C7160	7
21	C8128	7
22	C6145	7
23	C5010	8
24	C6093	8
25	C3017	9
26	C7085	9
27	C8036	9
28	C8192	9
29	C4052	10
30	C7059	10
31	C8124	10
32	C7047	11
33	C8135	11
34	C6042	12
35	C7042	12
36	C3036	13
37	C5031	14
38	C7132	14

Obs	CPEid	survtime
39	C7019	15
40	C8067	15
41	C8163	15
42	C7137	15
43	C6011	17
44	C6033	17
45	C5023	18
46	C8100	18
47	C3032	18
48	C8023	21
49	C5033(NON CPE conversion)	23
50	C6141	27
51	C7172	27
52	C2035	28
53	C7169	30
54	C2021	31
55	C8131	31
56	C5026	32
57	C8183	32
58	C4041	33
59	C5036	35
60	C7025	35
61	C8144	35
62	C6032	37
63	C2002	38
64	C6104	39
65	C3003	40
66	C6088	42
67	C8002	43
68	C4025	45
69	C6109	47
70	C8081	49
71	C8068	49
72	C5045	51
73	C8009	51
74	C7063	52
75	C8102	54
76	C2047	57

Obs	CPEid	survtime
77	C8146	62
78	C6119	70
79	C7014	98
80	C8058	111
81	C6010	117
82	C8080	123
83	C1041	124
84	C7165	125
85	C7175	125
86	C4073	130
87	C7109	142
88	C6009	147
89	C5032	152
90	C8064	170
91	C4071	171
92	C3007	177
93	C7081	191
94	C5069	209
95	C7122	217
96	C6102	218
97	C8035	231
98	C9902	249
99	C5037	261
100	C5025	263
101	C6022	277
102	C8184	279
103	C7086	280
104	C7074	282
105	C8186	288
106	C6024	291
107	C8022	294
108	C8182	295
109	C8122	301
110	C8180	303
111	C6066	307
112	C8178	312
113	C8190	319
114	C8191	319

Obs	CPEid	survtime
115	C8157	325
116	C8162	327
117	C8156	338
118	C8151	339
119	C5029	340
120	C4057	360
121	C8139	363
122	C7161	388
123	C6087	391
124	C8125	393
125	C8132	397
126	C7069	401
127	C6077	402
128	C8119	404
129	C8120	407
130	C8133	407
131	C6139	413
132	C8105	415
133	C8107	415
134	C8108	415
135	C2037	418
136	C1042	426
137	C8101	429
138	C8137	429
139	C8138	429
140	C8104	430
141	C8103	431
142	C8172	435
143	C3020	438
144	C8171	456
145	C8089	463
146	C8077	471
147	C8169	474
148	C8168	484
149	C8086	487
150	C8074	492
151	C4023	503
152	C8069	508

Obs	CPEid	survtime
153	C8065	509
154	C7075	513
155	C8063	515
156	C8060	524
157	C8059	528
158	C8049	543
159	C8040	549
160	C8121	551
161	C8044	553
162	C8085	556
163	C8032	563
164	C8034	570
165	C8024	572
166	C8025	572
167	C8164	572
168	C8026	576
169	C8031	576
170	C8030	579
171	C8020	582
172	C8015	599
173	C8013	606
174	C8012	607
175	C8008	612
176	C8004	614
177	C8003	621
178	C8001	625
179	C7178	640
180	C7147	649
181	C7142	654
182	C7130	670
183	C7128	672
184	C7174	673
185	C7166	677
186	C3039	683
187	C7114	695
188	C7113	697
189	C7143	704
190	C7110	709

Obs	CPEid	survtime
191	C3015	725
192	C7104	733
193	C6048	735
194	C7102	737
195	C7099	744
196	C7176	744
197	C7100	746
198	C6038	762
199	C7089	768
200	C7088	774
201	C7092	775
202	C7084	779
203	C4075	798
204	C7164	800
205	C7072	822
206	C7064	847
207	C7060	864
208	C7061	865
209	C7055	874
210	C7053	877
211	C7046	885
212	C7051	887
213	C7116	893
214	C7121	897
215	C7035	908
216	C7037	908
217	C7030	915
218	C7029	918
219	C7026	920
220	C7038	922
221	C7018	927
222	C7022	928
223	C7120	941
224	C7117	949
225	C7159	954
226	C7007	956
227	C7009	956
228	C7010	957

Obs	CPEid	survtime
229	C7118	962
230	C3033	963
231	C7003	993
232	C6124	1010
233	C6121	1011
234	C6118	1027
235	C6114(NON CPE CONVERSION)	1033
236	C5077	1035
237	C6105	1054
238	C6146	1059
239	C6098	1064
240	C6158	1075
241	C6034	1084
242	C6081	1101
243	C6083	1101
244	C6076	1103
245	C6079	1111
246	C6075	1115
247	C6071	1125
248	C3012	1125
249	C6138	1145
250	C6086	1146
251	C6068	1152
252	C6069	1155
253	C6064	1163
254	C6063	1167
255	C6059	1188
256	C6140	1202
257	C6144	1203
258	C6056	1209
259	C6043	1237
260	C6041	1244
261	C6039	1257
262	C6036	1259
263	C6089	1264
264	C6029	1275
265	C6031	1280
266	C6021	1283

Obs	CPEid	survtime
267	C6023	1283
268	C6025	1286
269	C6020	1292
270	C6017	1300
271	C6015	1307
272	C6013	1315
273	C6012	1318
274	C6007	1326
275	C6006	1331
276	C6004	1336
277	C6001	1342
278	C5068	1392
279	C5064	1397
280	C5062	1402
281	C5044	1487
282	C5058	1500
283	C5043	1503
284	C5041	1517
285	C5039	1534
286	C5038	1540
287	C5055	1548
288	C3013	1549
289	C6091	1556
290	C5028	1573
291	C5022	1575
292	C5021	1619
293	C5017	1635
294	C5012	1712
295	C5013	1712
296	C4016	1753
297	C4063	1795
298	C4054	1813
299	C4074	1824
300	C4034	1831
301	C4003	1846
302	C4026	1888
303	C4024	1900
304	C4022	1901

Obs	CPEid	survtime
305	C4021	1909
306	C4017	1972
307	C4006	2000
308	C4029	2015
309	C4015	2018
310	C4030	2028
311	C4031	2028
312	C4070	2035
313	C4011	2053
314	C4059	2062
315	C4008	2067
316	C4009	2067
317	C4043	2144
318	C3024	2170
319	C3042	2197
320	C3009	2253
321	C3023	2268
322	C3004	2336
323	C3019	2364
324	C3018	2391
325	C3035	2420
326	C3016	2423
327	C3046	2465
328	C2030	2471
329	C2027	2511
330	C2043	2538
331	C2016	2566
332	C2017	2566
333	C2026	2569
334	C2015	2573
335	C2025	2583
336	C2042	2593
337	C2014	2606
338	C2013	2616
339	C2033	2623
340	C2045	2625
341	C2032	2654
342	C2024	2671

Obs	CPEid	survtime
343	C2006	2711
344	C1008	2866
345	C1005	2901
346	C1035	2924
347	C1038	2931
348	C1025	2943
349	C1034	2962
350	C1017	3007
351	C2048	3050
352	C1003(NON CPE conversion)	3062
353	C1036	3075
354	C1033	3077
355	C1037	3080
356	C1013	3090
357	C0004	3218
358	C0003	3262
359	C0007	3398

The LIFETEST Procedure

Product-Limit Survival Estimates						
survtime		Survival	Failure	Survival Standard Error	Number Failed	Number Left
0.00		1.0000	0	0	0	359
1.00	*	.	.	.	0	358
1.00	*	.	.	.	0	357
1.00	*	.	.	.	0	356
2.00	*	.	.	.	0	355
3.00		0.9972	0.00282	0.00281	1	354
3.00	*	.	.	.	1	353
3.00	*	.	.	.	1	352
3.00	*	.	.	.	1	351
4.00		0.9943	0.00566	0.00399	2	350
4.00	*	.	.	.	2	349
4.00	*	.	.	.	2	348
5.00		.	.	.	3	347
5.00		0.9886	0.0114	0.00565	4	346
5.00	*	.	.	.	4	345
6.00		0.9858	0.0142	0.00632	5	344
6.00	*	.	.	.	5	343
6.00	*	.	.	.	5	342
6.00	*	.	.	.	5	341
7.00		0.9829	0.0171	0.00693	6	340
7.00	*	.	.	.	6	339
7.00	*	.	.	.	6	338
7.00	*	.	.	.	6	337
8.00	*	.	.	.	6	336
8.00	*	.	.	.	6	335
9.00	*	.	.	.	6	334
9.00	*	.	.	.	6	333
9.00	*	.	.	.	6	332
9.00	*	.	.	.	6	331
10.00	*	.	.	.	6	330
10.00	*	.	.	.	6	329
10.00	*	.	.	.	6	328
11.00		0.9799	0.0201	0.00753	7	327
11.00	*	.	.	.	7	326
12.00	*	.	.	.	7	325

The LIFETEST Procedure

Product-Limit Survival Estimates						
survtime		Survival	Failure	Survival Standard Error	Number Failed	Number Left
12.00	*	.	.	.	7	324
13.00		0.9769	0.0231	0.00809	8	323
14.00		.	.	.	9	322
14.00		0.9708	0.0292	0.00910	10	321
15.00		.	.	.	11	320
15.00		0.9648	0.0352	0.0100	12	319
15.00	*	.	.	.	12	318
15.00	*	.	.	.	12	317
17.00	*	.	.	.	12	316
17.00	*	.	.	.	12	315
18.00		0.9617	0.0383	0.0104	13	314
18.00	*	.	.	.	13	313
18.00	*	.	.	.	13	312
21.00	*	.	.	.	13	311
23.00	*	.	.	.	13	310
27.00	*	.	.	.	13	309
27.00	*	.	.	.	13	308
28.00		0.9586	0.0414	0.0109	14	307
30.00	*	.	.	.	14	306
31.00	*	.	.	.	14	305
31.00	*	.	.	.	14	304
32.00		.	.	.	15	303
32.00		0.9523	0.0477	0.0117	16	302
33.00	*	.	.	.	16	301
35.00		.	.	.	17	300
35.00		.	.	.	18	299
35.00		0.9428	0.0572	0.0128	19	298
37.00	*	.	.	.	19	297
38.00		0.9396	0.0604	0.0131	20	296
39.00	*	.	.	.	20	295
40.00	*	.	.	.	20	294
42.00	*	.	.	.	20	293
43.00	*	.	.	.	20	292
45.00	*	.	.	.	20	291
47.00	*	.	.	.	20	290

The LIFETEST Procedure

Product-Limit Survival Estimates						
survtime		Survival	Failure	Survival Standard Error	Number Failed	Number Left
49.00		0.9364	0.0636	0.0135	21	289
49.00	*	.	.	.	21	288
51.00	*	.	.	.	21	287
51.00	*	.	.	.	21	286
52.00	*	.	.	.	21	285
54.00	*	.	.	.	21	284
57.00	*	.	.	.	21	283
62.00	*	.	.	.	21	282
70.00	*	.	.	.	21	281
98.00	*	.	.	.	21	280
111.00	*	.	.	.	21	279
117.00	*	.	.	.	21	278
123.00		0.9330	0.0670	0.0138	22	277
124.00	*	.	.	.	22	276
125.00	*	.	.	.	22	275
125.00	*	.	.	.	22	274
130.00	*	.	.	.	22	273
142.00	*	.	.	.	22	272
147.00	*	.	.	.	22	271
152.00	*	.	.	.	22	270
170.00	*	.	.	.	22	269
171.00	*	.	.	.	22	268
177.00	*	.	.	.	22	267
191.00	*	.	.	.	22	266
209.00	*	.	.	.	22	265
217.00	*	.	.	.	22	264
218.00	*	.	.	.	22	263
231.00	*	.	.	.	22	262
249.00	*	.	.	.	22	261
261.00	*	.	.	.	22	260
263.00	*	.	.	.	22	259
277.00	*	.	.	.	22	258
279.00	*	.	.	.	22	257
280.00	*	.	.	.	22	256
282.00	*	.	.	.	22	255

The LIFETEST Procedure

Product-Limit Survival Estimates						
survtime		Survival	Failure	Survival Standard Error	Number Failed	Number Left
288.00	*	.	.	.	22	254
291.00	*	.	.	.	22	253
294.00	*	.	.	.	22	252
295.00	*	.	.	.	22	251
301.00	*	.	.	.	22	250
303.00	*	.	.	.	22	249
307.00	*	.	.	.	22	248
312.00	*	.	.	.	22	247
319.00	*	.	.	.	22	246
319.00	*	.	.	.	22	245
325.00	*	.	.	.	22	244
327.00	*	.	.	.	22	243
338.00	*	.	.	.	22	242
339.00	*	.	.	.	22	241
340.00	*	.	.	.	22	240
360.00	*	.	.	.	22	239
363.00	*	.	.	.	22	238
388.00	*	.	.	.	22	237
391.00	*	.	.	.	22	236
393.00	*	.	.	.	22	235
397.00	*	.	.	.	22	234
401.00	*	.	.	.	22	233
402.00		0.9290	0.0710	0.0143	23	232
404.00	*	.	.	.	23	231
407.00	*	.	.	.	23	230
407.00	*	.	.	.	23	229
413.00	*	.	.	.	23	228
415.00	*	.	.	.	23	227
415.00	*	.	.	.	23	226
415.00	*	.	.	.	23	225
418.00		0.9249	0.0751	0.0149	24	224
426.00	*	.	.	.	24	223
429.00	*	.	.	.	24	222
429.00	*	.	.	.	24	221
429.00	*	.	.	.	24	220

The LIFETEST Procedure

Product-Limit Survival Estimates						
survtime		Survival	Failure	Survival Standard Error	Number Failed	Number Left
430.00	*	.	.	.	24	219
431.00	*	.	.	.	24	218
435.00	*	.	.	.	24	217
438.00	*	.	.	.	24	216
456.00	*	.	.	.	24	215
463.00	*	.	.	.	24	214
471.00	*	.	.	.	24	213
474.00	*	.	.	.	24	212
484.00	*	.	.	.	24	211
487.00	*	.	.	.	24	210
492.00	*	.	.	.	24	209
503.00		0.9204	0.0796	0.0154	25	208
508.00	*	.	.	.	25	207
509.00	*	.	.	.	25	206
513.00	*	.	.	.	25	205
515.00	*	.	.	.	25	204
524.00	*	.	.	.	25	203
528.00	*	.	.	.	25	202
543.00	*	.	.	.	25	201
549.00	*	.	.	.	25	200
551.00	*	.	.	.	25	199
553.00	*	.	.	.	25	198
556.00	*	.	.	.	25	197
563.00	*	.	.	.	25	196
570.00	*	.	.	.	25	195
572.00	*	.	.	.	25	194
572.00	*	.	.	.	25	193
572.00	*	.	.	.	25	192
576.00	*	.	.	.	25	191
576.00	*	.	.	.	25	190
579.00	*	.	.	.	25	189
582.00	*	.	.	.	25	188
599.00	*	.	.	.	25	187
606.00	*	.	.	.	25	186
607.00	*	.	.	.	25	185

The LIFETEST Procedure

Product-Limit Survival Estimates						
survtime		Survival	Failure	Survival Standard Error	Number Failed	Number Left
612.00	*	.	.	.	25	184
614.00	*	.	.	.	25	183
621.00	*	.	.	.	25	182
625.00	*	.	.	.	25	181
640.00	*	.	.	.	25	180
649.00	*	.	.	.	25	179
654.00	*	.	.	.	25	178
670.00	*	.	.	.	25	177
672.00	*	.	.	.	25	176
673.00	*	.	.	.	25	175
677.00	*	.	.	.	25	174
683.00	*	.	.	.	25	173
695.00	*	.	.	.	25	172
697.00	*	.	.	.	25	171
704.00	*	.	.	.	25	170
709.00	*	.	.	.	25	169
725.00	*	.	.	.	25	168
733.00	*	.	.	.	25	167
735.00	*	.	.	.	25	166
737.00	*	.	.	.	25	165
744.00	*	.	.	.	25	164
744.00	*	.	.	.	25	163
746.00	*	.	.	.	25	162
762.00	*	.	.	.	25	161
768.00	*	.	.	.	25	160
774.00	*	.	.	.	25	159
775.00	*	.	.	.	25	158
779.00	*	.	.	.	25	157
798.00		0.9146	0.0854	0.0164	26	156
800.00	*	.	.	.	26	155
822.00	*	.	.	.	26	154
847.00	*	.	.	.	26	153
864.00	*	.	.	.	26	152
865.00	*	.	.	.	26	151
874.00	*	.	.	.	26	150

The LIFETEST Procedure

Product-Limit Survival Estimates						
survtime		Survival	Failure	Survival Standard Error	Number Failed	Number Left
877.00	*	.	.	.	26	149
885.00	*	.	.	.	26	148
887.00	*	.	.	.	26	147
893.00	*	.	.	.	26	146
897.00	*	.	.	.	26	145
908.00	*	.	.	.	26	144
908.00	*	.	.	.	26	143
915.00	*	.	.	.	26	142
918.00	*	.	.	.	26	141
920.00	*	.	.	.	26	140
922.00	*	.	.	.	26	139
927.00	*	.	.	.	26	138
928.00	*	.	.	.	26	137
941.00	*	.	.	.	26	136
949.00	*	.	.	.	26	135
954.00	*	.	.	.	26	134
956.00	*	.	.	.	26	133
956.00	*	.	.	.	26	132
957.00	*	.	.	.	26	131
962.00	*	.	.	.	26	130
963.00	*	.	.	.	26	129
993.00	*	.	.	.	26	128
1010.00	*	.	.	.	26	127
1011.00	*	.	.	.	26	126
1027.00	*	.	.	.	26	125
1033.00	*	.	.	.	26	124
1035.00	*	.	.	.	26	123
1054.00	*	.	.	.	26	122
1059.00	*	.	.	.	26	121
1064.00	*	.	.	.	26	120
1075.00	*	.	.	.	26	119
1084.00	*	.	.	.	26	118
1101.00	*	.	.	.	26	117
1101.00	*	.	.	.	26	116
1103.00	*	.	.	.	26	115

The LIFETEST Procedure

Product-Limit Survival Estimates						
survtime		Survival	Failure	Survival Standard Error	Number Failed	Number Left
1111.00	*	.	.	.	26	114
1115.00	*	.	.	.	26	113
1125.00		0.9065	0.0935	0.0181	27	112
1125.00	*	.	.	.	27	111
1145.00	*	.	.	.	27	110
1146.00	*	.	.	.	27	109
1152.00	*	.	.	.	27	108
1155.00	*	.	.	.	27	107
1163.00	*	.	.	.	27	106
1167.00	*	.	.	.	27	105
1188.00	*	.	.	.	27	104
1202.00	*	.	.	.	27	103
1203.00	*	.	.	.	27	102
1209.00	*	.	.	.	27	101
1237.00	*	.	.	.	27	100
1244.00	*	.	.	.	27	99
1257.00	*	.	.	.	27	98
1259.00	*	.	.	.	27	97
1264.00	*	.	.	.	27	96
1275.00	*	.	.	.	27	95
1280.00	*	.	.	.	27	94
1283.00	*	.	.	.	27	93
1283.00	*	.	.	.	27	92
1286.00	*	.	.	.	27	91
1292.00	*	.	.	.	27	90
1300.00	*	.	.	.	27	89
1307.00	*	.	.	.	27	88
1315.00	*	.	.	.	27	87
1318.00	*	.	.	.	27	86
1326.00	*	.	.	.	27	85
1331.00	*	.	.	.	27	84
1336.00	*	.	.	.	27	83
1342.00	*	.	.	.	27	82
1392.00	*	.	.	.	27	81
1397.00	*	.	.	.	27	80

The LIFETEST Procedure

Product-Limit Survival Estimates						
survtime		Survival	Failure	Survival Standard Error	Number Failed	Number Left
1402.00	*	.	.	.	27	79
1487.00	*	.	.	.	27	78
1500.00	*	.	.	.	27	77
1503.00	*	.	.	.	27	76
1517.00	*	.	.	.	27	75
1534.00	*	.	.	.	27	74
1540.00	*	.	.	.	27	73
1548.00	*	.	.	.	27	72
1549.00	*	.	.	.	27	71
1556.00	*	.	.	.	27	70
1573.00	*	.	.	.	27	69
1575.00	*	.	.	.	27	68
1619.00	*	.	.	.	27	67
1635.00	*	.	.	.	27	66
1712.00	*	.	.	.	27	65
1712.00	*	.	.	.	27	64
1753.00	*	.	.	.	27	63
1795.00	*	.	.	.	27	62
1813.00	*	.	.	.	27	61
1824.00	*	.	.	.	27	60
1831.00	*	.	.	.	27	59
1846.00	*	.	.	.	27	58
1888.00	*	.	.	.	27	57
1900.00	*	.	.	.	27	56
1901.00	*	.	.	.	27	55
1909.00	*	.	.	.	27	54
1972.00	*	.	.	.	27	53
2000.00	*	.	.	.	27	52
2015.00	*	.	.	.	27	51
2018.00	*	.	.	.	27	50
2028.00	*	.	.	.	27	49
2028.00	*	.	.	.	27	48
2035.00	*	.	.	.	27	47
2053.00	*	.	.	.	27	46
2062.00	*	.	.	.	27	45

The LIFETEST Procedure

Product-Limit Survival Estimates						
survtime		Survival	Failure	Survival Standard Error	Number Failed	Number Left
2067.00	*	.	.	.	27	44
2067.00	*	.	.	.	27	43
2144.00	*	.	.	.	27	42
2170.00	*	.	.	.	27	41
2197.00	*	.	.	.	27	40
2253.00	*	.	.	.	27	39
2268.00	*	.	.	.	27	38
2336.00	*	.	.	.	27	37
2364.00	*	.	.	.	27	36
2391.00	*	.	.	.	27	35
2420.00	*	.	.	.	27	34
2423.00	*	.	.	.	27	33
2465.00	*	.	.	.	27	32
2471.00	*	.	.	.	27	31
2511.00	*	.	.	.	27	30
2538.00	*	.	.	.	27	29
2566.00	*	.	.	.	27	28
2566.00	*	.	.	.	27	27
2569.00	*	.	.	.	27	26
2573.00	*	.	.	.	27	25
2583.00	*	.	.	.	27	24
2593.00	*	.	.	.	27	23
2606.00	*	.	.	.	27	22
2616.00	*	.	.	.	27	21
2623.00	*	.	.	.	27	20
2625.00	*	.	.	.	27	19
2654.00	*	.	.	.	27	18
2671.00	*	.	.	.	27	17
2711.00	*	.	.	.	27	16
2866.00	*	.	.	.	27	15
2901.00	*	.	.	.	27	14
2924.00	*	.	.	.	27	13
2931.00	*	.	.	.	27	12
2943.00	*	.	.	.	27	11
2962.00	*	.	.	.	27	10

The LIFETEST Procedure

Product-Limit Survival Estimates						
survtime		Survival	Failure	Survival Standard Error	Number Failed	Number Left
3007.00	*	.	.	.	27	9
3050.00	*	.	.	.	27	8
3062.00	*	.	.	.	27	7
3075.00	*	.	.	.	27	6
3077.00	*	.	.	.	27	5
3080.00	*	.	.	.	27	4
3090.00	*	.	.	.	27	3
3218.00	*	.	.	.	27	2
3262.00	*	.	.	.	27	1
3398.00	*	.	.	.	27	0

Note: The marked survival times are censored observations.

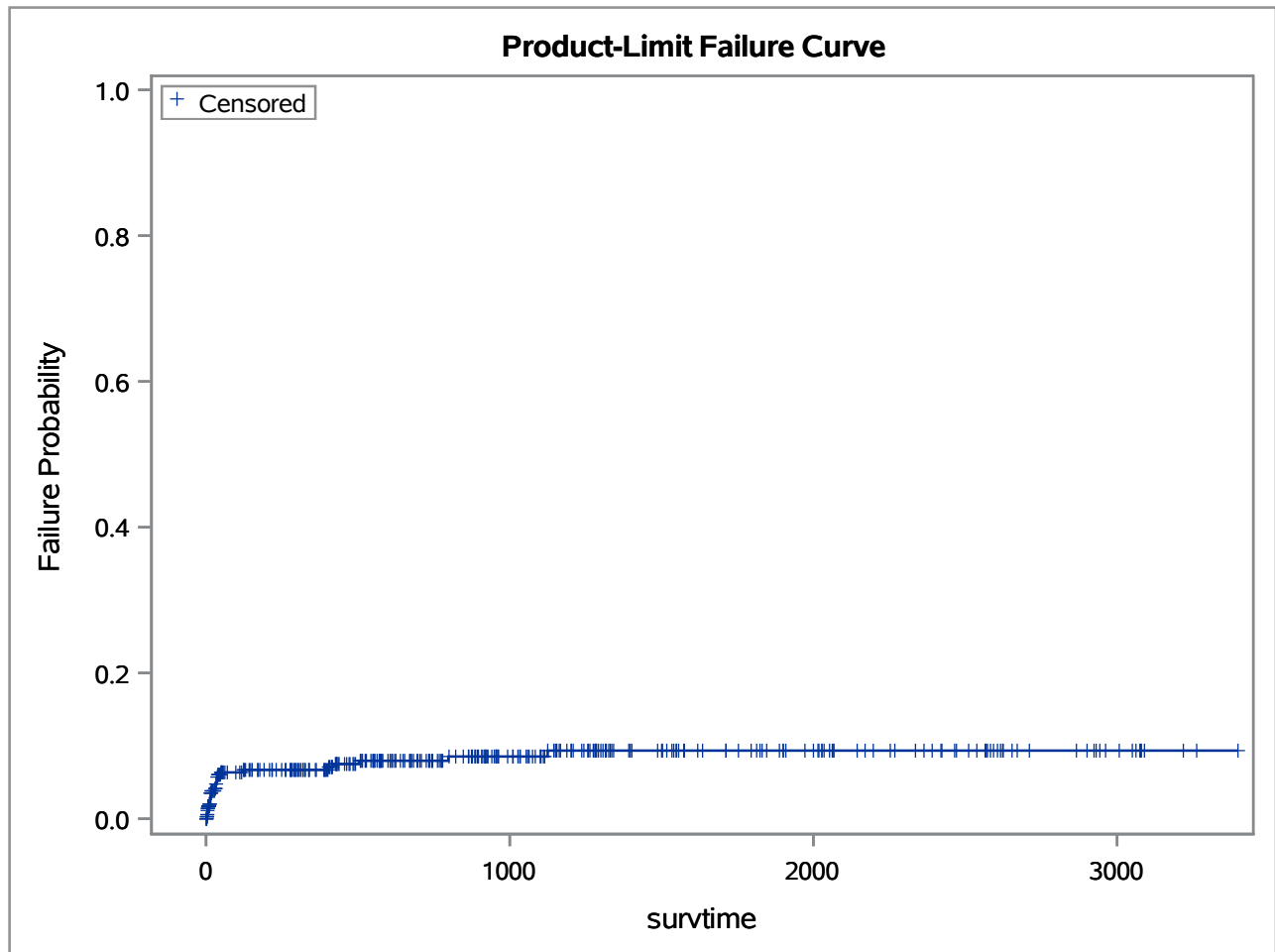
Summary Statistics for Time Variable survtime

Quartile Estimates				
Percent	Point Estimate	95% Confidence Interval		
		Transform	[Lower	Upper)
75	.	LOGLOG	.	.
50	.	LOGLOG	.	.
25	.	LOGLOG	.	.

Mean	Standard Error
1040.83	16.24

Note: The mean survival time and its standard error were underestimated because the largest observation was censored and the estimation was restricted to the largest event time.

The LIFETEST Procedure



Summary of the Number of Censored and Uncensored Values			
Total	Failed	Censored	Percent Censored
359	27	332	92.48

The LIFETEST Procedure

Product-Limit Survival Estimates						
survtimeMo		Survival	Failure	Survival Standard Error	Number Failed	Number Left
0.000		1.0000	0	0	0	359
0.033	*	.	.	.	0	358
0.033	*	.	.	.	0	357
0.033	*	.	.	.	0	356
0.067	*	.	.	.	0	355
0.100		0.9972	0.00282	0.00281	1	354
0.100	*	.	.	.	1	353
0.100	*	.	.	.	1	352
0.100	*	.	.	.	1	351
0.133		0.9943	0.00566	0.00399	2	350
0.133	*	.	.	.	2	349
0.133	*	.	.	.	2	348
0.167		.	.	.	3	347
0.167		0.9886	0.0114	0.00565	4	346
0.167	*	.	.	.	4	345
0.200		0.9858	0.0142	0.00632	5	344
0.200	*	.	.	.	5	343
0.200	*	.	.	.	5	342
0.200	*	.	.	.	5	341
0.233		0.9829	0.0171	0.00693	6	340
0.233	*	.	.	.	6	339
0.233	*	.	.	.	6	338
0.233	*	.	.	.	6	337
0.267	*	.	.	.	6	336
0.267	*	.	.	.	6	335
0.300	*	.	.	.	6	334
0.300	*	.	.	.	6	333
0.300	*	.	.	.	6	332
0.300	*	.	.	.	6	331
0.333	*	.	.	.	6	330
0.333	*	.	.	.	6	329
0.333	*	.	.	.	6	328
0.367		0.9799	0.0201	0.00753	7	327
0.367	*	.	.	.	7	326
0.400	*	.	.	.	7	325

The LIFETEST Procedure

Product-Limit Survival Estimates						
survtimeMo		Survival	Failure	Survival Standard Error	Number Failed	Number Left
0.400	*	.	.	.	7	324
0.433		0.9769	0.0231	0.00809	8	323
0.467		.	.	.	9	322
0.467		0.9708	0.0292	0.00910	10	321
0.500		.	.	.	11	320
0.500		0.9648	0.0352	0.0100	12	319
0.500	*	.	.	.	12	318
0.500	*	.	.	.	12	317
0.567	*	.	.	.	12	316
0.567	*	.	.	.	12	315
0.600		0.9617	0.0383	0.0104	13	314
0.600	*	.	.	.	13	313
0.600	*	.	.	.	13	312
0.700	*	.	.	.	13	311
0.767	*	.	.	.	13	310
0.900	*	.	.	.	13	309
0.900	*	.	.	.	13	308
0.933		0.9586	0.0414	0.0109	14	307
1.000	*	.	.	.	14	306
1.033	*	.	.	.	14	305
1.033	*	.	.	.	14	304
1.067		.	.	.	15	303
1.067		0.9523	0.0477	0.0117	16	302
1.100	*	.	.	.	16	301
1.167		.	.	.	17	300
1.167		.	.	.	18	299
1.167		0.9428	0.0572	0.0128	19	298
1.233	*	.	.	.	19	297
1.267		0.9396	0.0604	0.0131	20	296
1.300	*	.	.	.	20	295
1.333	*	.	.	.	20	294
1.400	*	.	.	.	20	293
1.433	*	.	.	.	20	292
1.500	*	.	.	.	20	291
1.567	*	.	.	.	20	290

The LIFETEST Procedure

Product-Limit Survival Estimates						
survtimeMo		Survival	Failure	Survival Standard Error	Number Failed	Number Left
1.633		0.9364	0.0636	0.0135	21	289
1.633	*	.	.	.	21	288
1.700	*	.	.	.	21	287
1.700	*	.	.	.	21	286
1.733	*	.	.	.	21	285
1.800	*	.	.	.	21	284
1.900	*	.	.	.	21	283
2.067	*	.	.	.	21	282
2.333	*	.	.	.	21	281
3.267	*	.	.	.	21	280
3.700	*	.	.	.	21	279
3.900	*	.	.	.	21	278
4.100		0.9330	0.0670	0.0138	22	277
4.133	*	.	.	.	22	276
4.167	*	.	.	.	22	275
4.167	*	.	.	.	22	274
4.333	*	.	.	.	22	273
4.733	*	.	.	.	22	272
4.900	*	.	.	.	22	271
5.067	*	.	.	.	22	270
5.667	*	.	.	.	22	269
5.700	*	.	.	.	22	268
5.900	*	.	.	.	22	267
6.367	*	.	.	.	22	266
6.967	*	.	.	.	22	265
7.233	*	.	.	.	22	264
7.267	*	.	.	.	22	263
7.700	*	.	.	.	22	262
8.300	*	.	.	.	22	261
8.700	*	.	.	.	22	260
8.767	*	.	.	.	22	259
9.233	*	.	.	.	22	258
9.300	*	.	.	.	22	257
9.333	*	.	.	.	22	256
9.400	*	.	.	.	22	255

The LIFETEST Procedure

Product-Limit Survival Estimates						
survtimeMo		Survival	Failure	Survival Standard Error	Number Failed	Number Left
9.600	*	.	.	.	22	254
9.700	*	.	.	.	22	253
9.800	*	.	.	.	22	252
9.833	*	.	.	.	22	251
10.033	*	.	.	.	22	250
10.100	*	.	.	.	22	249
10.233	*	.	.	.	22	248
10.400	*	.	.	.	22	247
10.633	*	.	.	.	22	246
10.633	*	.	.	.	22	245
10.833	*	.	.	.	22	244
10.900	*	.	.	.	22	243
11.267	*	.	.	.	22	242
11.300	*	.	.	.	22	241
11.333	*	.	.	.	22	240
12.000	*	.	.	.	22	239
12.100	*	.	.	.	22	238
12.933	*	.	.	.	22	237
13.033	*	.	.	.	22	236
13.100	*	.	.	.	22	235
13.233	*	.	.	.	22	234
13.367	*	.	.	.	22	233
13.400		0.9290	0.0710	0.0143	23	232
13.467	*	.	.	.	23	231
13.567	*	.	.	.	23	230
13.567	*	.	.	.	23	229
13.767	*	.	.	.	23	228
13.833	*	.	.	.	23	227
13.833	*	.	.	.	23	226
13.833	*	.	.	.	23	225
13.933		0.9249	0.0751	0.0149	24	224
14.200	*	.	.	.	24	223
14.300	*	.	.	.	24	222
14.300	*	.	.	.	24	221
14.300	*	.	.	.	24	220

The LIFETEST Procedure

Product-Limit Survival Estimates						
survtimeMo		Survival	Failure	Survival Standard Error	Number Failed	Number Left
14.333	*	.	.	.	24	219
14.367	*	.	.	.	24	218
14.500	*	.	.	.	24	217
14.600	*	.	.	.	24	216
15.200	*	.	.	.	24	215
15.433	*	.	.	.	24	214
15.700	*	.	.	.	24	213
15.800	*	.	.	.	24	212
16.133	*	.	.	.	24	211
16.233	*	.	.	.	24	210
16.400	*	.	.	.	24	209
16.767		0.9204	0.0796	0.0154	25	208
16.933	*	.	.	.	25	207
16.967	*	.	.	.	25	206
17.100	*	.	.	.	25	205
17.167	*	.	.	.	25	204
17.467	*	.	.	.	25	203
17.600	*	.	.	.	25	202
18.100	*	.	.	.	25	201
18.300	*	.	.	.	25	200
18.367	*	.	.	.	25	199
18.433	*	.	.	.	25	198
18.533	*	.	.	.	25	197
18.767	*	.	.	.	25	196
19.000	*	.	.	.	25	195
19.067	*	.	.	.	25	194
19.067	*	.	.	.	25	193
19.067	*	.	.	.	25	192
19.200	*	.	.	.	25	191
19.200	*	.	.	.	25	190
19.300	*	.	.	.	25	189
19.400	*	.	.	.	25	188
19.967	*	.	.	.	25	187
20.200	*	.	.	.	25	186
20.233	*	.	.	.	25	185

The LIFETEST Procedure

Product-Limit Survival Estimates						
survtimeMo		Survival	Failure	Survival Standard Error	Number Failed	Number Left
20.400	*	.	.	.	25	184
20.467	*	.	.	.	25	183
20.700	*	.	.	.	25	182
20.833	*	.	.	.	25	181
21.333	*	.	.	.	25	180
21.633	*	.	.	.	25	179
21.800	*	.	.	.	25	178
22.333	*	.	.	.	25	177
22.400	*	.	.	.	25	176
22.433	*	.	.	.	25	175
22.567	*	.	.	.	25	174
22.767	*	.	.	.	25	173
23.167	*	.	.	.	25	172
23.233	*	.	.	.	25	171
23.467	*	.	.	.	25	170
23.633	*	.	.	.	25	169
24.167	*	.	.	.	25	168
24.433	*	.	.	.	25	167
24.500	*	.	.	.	25	166
24.567	*	.	.	.	25	165
24.800	*	.	.	.	25	164
24.800	*	.	.	.	25	163
24.867	*	.	.	.	25	162
25.400	*	.	.	.	25	161
25.600	*	.	.	.	25	160
25.800	*	.	.	.	25	159
25.833	*	.	.	.	25	158
25.967	*	.	.	.	25	157
26.600		0.9146	0.0854	0.0164	26	156
26.667	*	.	.	.	26	155
27.400	*	.	.	.	26	154
28.233	*	.	.	.	26	153
28.800	*	.	.	.	26	152
28.833	*	.	.	.	26	151
29.133	*	.	.	.	26	150

The LIFETEST Procedure

Product-Limit Survival Estimates						
survtimeMo		Survival	Failure	Survival Standard Error	Number Failed	Number Left
29.233	*	.	.	.	26	149
29.500	*	.	.	.	26	148
29.567	*	.	.	.	26	147
29.767	*	.	.	.	26	146
29.900	*	.	.	.	26	145
30.267	*	.	.	.	26	144
30.267	*	.	.	.	26	143
30.500	*	.	.	.	26	142
30.600	*	.	.	.	26	141
30.667	*	.	.	.	26	140
30.733	*	.	.	.	26	139
30.900	*	.	.	.	26	138
30.933	*	.	.	.	26	137
31.367	*	.	.	.	26	136
31.633	*	.	.	.	26	135
31.800	*	.	.	.	26	134
31.867	*	.	.	.	26	133
31.867	*	.	.	.	26	132
31.900	*	.	.	.	26	131
32.067	*	.	.	.	26	130
32.100	*	.	.	.	26	129
33.100	*	.	.	.	26	128
33.667	*	.	.	.	26	127
33.700	*	.	.	.	26	126
34.233	*	.	.	.	26	125
34.433	*	.	.	.	26	124
34.500	*	.	.	.	26	123
35.133	*	.	.	.	26	122
35.300	*	.	.	.	26	121
35.467	*	.	.	.	26	120
35.833	*	.	.	.	26	119
36.133	*	.	.	.	26	118
36.700	*	.	.	.	26	117
36.700	*	.	.	.	26	116
36.767	*	.	.	.	26	115

The LIFETEST Procedure

Product-Limit Survival Estimates						
survtimeMo		Survival	Failure	Survival Standard Error	Number Failed	Number Left
37.033	*	.	.	.	26	114
37.167	*	.	.	.	26	113
37.500		0.9065	0.0935	0.0181	27	112
37.500	*	.	.	.	27	111
38.167	*	.	.	.	27	110
38.200	*	.	.	.	27	109
38.400	*	.	.	.	27	108
38.500	*	.	.	.	27	107
38.767	*	.	.	.	27	106
38.900	*	.	.	.	27	105
39.600	*	.	.	.	27	104
40.067	*	.	.	.	27	103
40.100	*	.	.	.	27	102
40.300	*	.	.	.	27	101
41.233	*	.	.	.	27	100
41.467	*	.	.	.	27	99
41.900	*	.	.	.	27	98
41.967	*	.	.	.	27	97
42.133	*	.	.	.	27	96
42.500	*	.	.	.	27	95
42.667	*	.	.	.	27	94
42.767	*	.	.	.	27	93
42.767	*	.	.	.	27	92
42.867	*	.	.	.	27	91
43.067	*	.	.	.	27	90
43.333	*	.	.	.	27	89
43.567	*	.	.	.	27	88
43.833	*	.	.	.	27	87
43.933	*	.	.	.	27	86
44.200	*	.	.	.	27	85
44.367	*	.	.	.	27	84
44.533	*	.	.	.	27	83
44.733	*	.	.	.	27	82
46.400	*	.	.	.	27	81
46.567	*	.	.	.	27	80

The LIFETEST Procedure

Product-Limit Survival Estimates						
survtimeMo		Survival	Failure	Survival Standard Error	Number Failed	Number Left
46.733	*	.	.	.	27	79
49.567	*	.	.	.	27	78
50.000	*	.	.	.	27	77
50.100	*	.	.	.	27	76
50.567	*	.	.	.	27	75
51.133	*	.	.	.	27	74
51.333	*	.	.	.	27	73
51.600	*	.	.	.	27	72
51.633	*	.	.	.	27	71
51.867	*	.	.	.	27	70
52.433	*	.	.	.	27	69
52.500	*	.	.	.	27	68
53.967	*	.	.	.	27	67
54.500	*	.	.	.	27	66
57.067	*	.	.	.	27	65
57.067	*	.	.	.	27	64
58.433	*	.	.	.	27	63
59.833	*	.	.	.	27	62
60.433	*	.	.	.	27	61
60.800	*	.	.	.	27	60
61.033	*	.	.	.	27	59
61.533	*	.	.	.	27	58
62.933	*	.	.	.	27	57
63.333	*	.	.	.	27	56
63.367	*	.	.	.	27	55
63.633	*	.	.	.	27	54
65.733	*	.	.	.	27	53
66.667	*	.	.	.	27	52
67.167	*	.	.	.	27	51
67.267	*	.	.	.	27	50
67.600	*	.	.	.	27	49
67.600	*	.	.	.	27	48
67.833	*	.	.	.	27	47
68.433	*	.	.	.	27	46
68.733	*	.	.	.	27	45

The LIFETEST Procedure

Product-Limit Survival Estimates						
survtimeMo		Survival	Failure	Survival Standard Error	Number Failed	Number Left
68.900	*	.	.	.	27	44
68.900	*	.	.	.	27	43
71.467	*	.	.	.	27	42
72.333	*	.	.	.	27	41
73.233	*	.	.	.	27	40
75.100	*	.	.	.	27	39
75.600	*	.	.	.	27	38
77.867	*	.	.	.	27	37
78.800	*	.	.	.	27	36
79.700	*	.	.	.	27	35
80.667	*	.	.	.	27	34
80.767	*	.	.	.	27	33
82.167	*	.	.	.	27	32
82.367	*	.	.	.	27	31
83.700	*	.	.	.	27	30
84.600	*	.	.	.	27	29
85.533	*	.	.	.	27	28
85.533	*	.	.	.	27	27
85.633	*	.	.	.	27	26
85.767	*	.	.	.	27	25
86.100	*	.	.	.	27	24
86.433	*	.	.	.	27	23
86.867	*	.	.	.	27	22
87.200	*	.	.	.	27	21
87.433	*	.	.	.	27	20
87.500	*	.	.	.	27	19
88.467	*	.	.	.	27	18
89.033	*	.	.	.	27	17
90.367	*	.	.	.	27	16
95.533	*	.	.	.	27	15
96.700	*	.	.	.	27	14
97.467	*	.	.	.	27	13
97.700	*	.	.	.	27	12
98.100	*	.	.	.	27	11
98.733	*	.	.	.	27	10

The LIFETEST Procedure

Product-Limit Survival Estimates						
survtimeMo		Survival	Failure	Survival Standard Error	Number Failed	Number Left
100.233	*	.	.	.	27	9
101.667	*	.	.	.	27	8
102.067	*	.	.	.	27	7
102.500	*	.	.	.	27	6
102.567	*	.	.	.	27	5
102.667	*	.	.	.	27	4
103.000	*	.	.	.	27	3
107.267	*	.	.	.	27	2
108.733	*	.	.	.	27	1
113.267	*	.	.	.	27	0

Note: The marked survival times are censored observations.

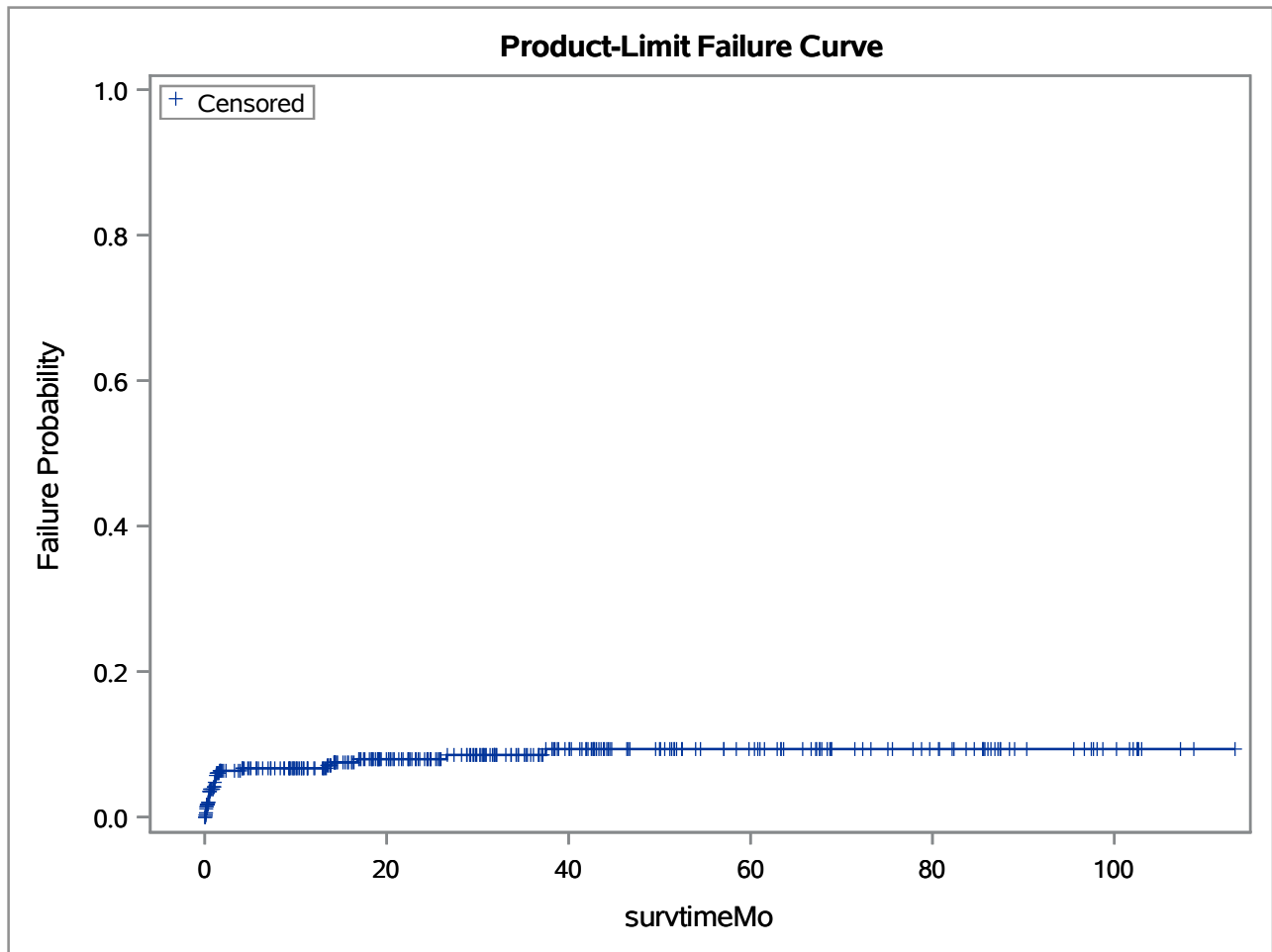
Summary Statistics for Time Variable survtimeMo

Quartile Estimates				
Percent	Point Estimate	95% Confidence Interval		
		Transform	[Lower	Upper)
75	.	LOGLOG	.	.
50	.	LOGLOG	.	.
25	.	LOGLOG	.	.

Mean	Standard Error
34.694	0.541

Note: The mean survival time and its standard error were underestimated because the largest observation was censored and the estimation was restricted to the largest event time.

The LIFETEST Procedure



Summary of the Number of Censored and Uncensored Values			
Total	Failed	Censored	Percent Censored
359	27	332	92.48

The LIFETEST Procedure

Product-Limit Survival Estimates						
survtimeMo		Survival	Failure	Survival Standard Error	Number Failed	Number Left
0.000		1.0000	0	0	0	359
0.033	*	.	.	.	0	358
0.033	*	.	.	.	0	357
0.033	*	.	.	.	0	356
0.067	*	.	.	.	0	355
0.100		0.9972	0.00282	0.00281	1	354
0.100	*	.	.	.	1	353
0.100	*	.	.	.	1	352
0.100	*	.	.	.	1	351
0.133		0.9943	0.00566	0.00399	2	350
0.133	*	.	.	.	2	349
0.133	*	.	.	.	2	348
0.167		.	.	.	3	347
0.167		0.9886	0.0114	0.00565	4	346
0.167	*	.	.	.	4	345
0.200		0.9858	0.0142	0.00632	5	344
0.200	*	.	.	.	5	343
0.200	*	.	.	.	5	342
0.200	*	.	.	.	5	341
0.233		0.9829	0.0171	0.00693	6	340
0.233	*	.	.	.	6	339
0.233	*	.	.	.	6	338
0.233	*	.	.	.	6	337
0.267	*	.	.	.	6	336
0.267	*	.	.	.	6	335
0.300	*	.	.	.	6	334
0.300	*	.	.	.	6	333
0.300	*	.	.	.	6	332
0.300	*	.	.	.	6	331
0.333	*	.	.	.	6	330
0.333	*	.	.	.	6	329
0.333	*	.	.	.	6	328
0.367		0.9799	0.0201	0.00753	7	327
0.367	*	.	.	.	7	326
0.400	*	.	.	.	7	325

The LIFETEST Procedure

Product-Limit Survival Estimates						
survtimeMo		Survival	Failure	Survival Standard Error	Number Failed	Number Left
0.400	*	.	.	.	7	324
0.433		0.9769	0.0231	0.00809	8	323
0.467		.	.	.	9	322
0.467		0.9708	0.0292	0.00910	10	321
0.500		.	.	.	11	320
0.500		0.9648	0.0352	0.0100	12	319
0.500	*	.	.	.	12	318
0.500	*	.	.	.	12	317
0.567	*	.	.	.	12	316
0.567	*	.	.	.	12	315
0.600		0.9617	0.0383	0.0104	13	314
0.600	*	.	.	.	13	313
0.600	*	.	.	.	13	312
0.700	*	.	.	.	13	311
0.767	*	.	.	.	13	310
0.900	*	.	.	.	13	309
0.900	*	.	.	.	13	308
0.933		0.9586	0.0414	0.0109	14	307
1.000	*	.	.	.	14	306
1.033	*	.	.	.	14	305
1.033	*	.	.	.	14	304
1.067		.	.	.	15	303
1.067		0.9523	0.0477	0.0117	16	302
1.100	*	.	.	.	16	301
1.167		.	.	.	17	300
1.167		.	.	.	18	299
1.167		0.9428	0.0572	0.0128	19	298
1.233	*	.	.	.	19	297
1.267		0.9396	0.0604	0.0131	20	296
1.300	*	.	.	.	20	295
1.333	*	.	.	.	20	294
1.400	*	.	.	.	20	293
1.433	*	.	.	.	20	292
1.500	*	.	.	.	20	291
1.567	*	.	.	.	20	290

The LIFETEST Procedure

Product-Limit Survival Estimates						
survtimeMo		Survival	Failure	Survival Standard Error	Number Failed	Number Left
1.633		0.9364	0.0636	0.0135	21	289
1.633	*	.	.	.	21	288
1.700	*	.	.	.	21	287
1.700	*	.	.	.	21	286
1.733	*	.	.	.	21	285
1.800	*	.	.	.	21	284
1.900	*	.	.	.	21	283
2.067	*	.	.	.	21	282
2.333	*	.	.	.	21	281
3.267	*	.	.	.	21	280
3.700	*	.	.	.	21	279
3.900	*	.	.	.	21	278
4.100		0.9330	0.0670	0.0138	22	277
4.133	*	.	.	.	22	276
4.167	*	.	.	.	22	275
4.167	*	.	.	.	22	274
4.333	*	.	.	.	22	273
4.733	*	.	.	.	22	272
4.900	*	.	.	.	22	271
5.067	*	.	.	.	22	270
5.667	*	.	.	.	22	269
5.700	*	.	.	.	22	268
5.900	*	.	.	.	22	267
6.367	*	.	.	.	22	266
6.967	*	.	.	.	22	265
7.233	*	.	.	.	22	264
7.267	*	.	.	.	22	263
7.700	*	.	.	.	22	262
8.300	*	.	.	.	22	261
8.700	*	.	.	.	22	260
8.767	*	.	.	.	22	259
9.233	*	.	.	.	22	258
9.300	*	.	.	.	22	257
9.333	*	.	.	.	22	256
9.400	*	.	.	.	22	255

The LIFETEST Procedure

Product-Limit Survival Estimates						
survtimeMo		Survival	Failure	Survival Standard Error	Number Failed	Number Left
9.600	*	.	.	.	22	254
9.700	*	.	.	.	22	253
9.800	*	.	.	.	22	252
9.833	*	.	.	.	22	251
10.033	*	.	.	.	22	250
10.100	*	.	.	.	22	249
10.233	*	.	.	.	22	248
10.400	*	.	.	.	22	247
10.633	*	.	.	.	22	246
10.633	*	.	.	.	22	245
10.833	*	.	.	.	22	244
10.900	*	.	.	.	22	243
11.267	*	.	.	.	22	242
11.300	*	.	.	.	22	241
11.333	*	.	.	.	22	240
12.000	*	.	.	.	22	239
12.100	*	.	.	.	22	238
12.933	*	.	.	.	22	237
13.033	*	.	.	.	22	236
13.100	*	.	.	.	22	235
13.233	*	.	.	.	22	234
13.367	*	.	.	.	22	233
13.400		0.9290	0.0710	0.0143	23	232
13.467	*	.	.	.	23	231
13.567	*	.	.	.	23	230
13.567	*	.	.	.	23	229
13.767	*	.	.	.	23	228
13.833	*	.	.	.	23	227
13.833	*	.	.	.	23	226
13.833	*	.	.	.	23	225
13.933		0.9249	0.0751	0.0149	24	224
14.200	*	.	.	.	24	223
14.300	*	.	.	.	24	222
14.300	*	.	.	.	24	221
14.300	*	.	.	.	24	220

The LIFETEST Procedure

Product-Limit Survival Estimates						
survtimeMo		Survival	Failure	Survival Standard Error	Number Failed	Number Left
14.333	*	.	.	.	24	219
14.367	*	.	.	.	24	218
14.500	*	.	.	.	24	217
14.600	*	.	.	.	24	216
15.200	*	.	.	.	24	215
15.433	*	.	.	.	24	214
15.700	*	.	.	.	24	213
15.800	*	.	.	.	24	212
16.133	*	.	.	.	24	211
16.233	*	.	.	.	24	210
16.400	*	.	.	.	24	209
16.767		0.9204	0.0796	0.0154	25	208
16.933	*	.	.	.	25	207
16.967	*	.	.	.	25	206
17.100	*	.	.	.	25	205
17.167	*	.	.	.	25	204
17.467	*	.	.	.	25	203
17.600	*	.	.	.	25	202
18.100	*	.	.	.	25	201
18.300	*	.	.	.	25	200
18.367	*	.	.	.	25	199
18.433	*	.	.	.	25	198
18.533	*	.	.	.	25	197
18.767	*	.	.	.	25	196
19.000	*	.	.	.	25	195
19.067	*	.	.	.	25	194
19.067	*	.	.	.	25	193
19.067	*	.	.	.	25	192
19.200	*	.	.	.	25	191
19.200	*	.	.	.	25	190
19.300	*	.	.	.	25	189
19.400	*	.	.	.	25	188
19.967	*	.	.	.	25	187
20.200	*	.	.	.	25	186
20.233	*	.	.	.	25	185

The LIFETEST Procedure

Product-Limit Survival Estimates						
survtimeMo		Survival	Failure	Survival Standard Error	Number Failed	Number Left
20.400	*	.	.	.	25	184
20.467	*	.	.	.	25	183
20.700	*	.	.	.	25	182
20.833	*	.	.	.	25	181
21.333	*	.	.	.	25	180
21.633	*	.	.	.	25	179
21.800	*	.	.	.	25	178
22.333	*	.	.	.	25	177
22.400	*	.	.	.	25	176
22.433	*	.	.	.	25	175
22.567	*	.	.	.	25	174
22.767	*	.	.	.	25	173
23.167	*	.	.	.	25	172
23.233	*	.	.	.	25	171
23.467	*	.	.	.	25	170
23.633	*	.	.	.	25	169
24.167	*	.	.	.	25	168
24.433	*	.	.	.	25	167
24.500	*	.	.	.	25	166
24.567	*	.	.	.	25	165
24.800	*	.	.	.	25	164
24.800	*	.	.	.	25	163
24.867	*	.	.	.	25	162
25.400	*	.	.	.	25	161
25.600	*	.	.	.	25	160
25.800	*	.	.	.	25	159
25.833	*	.	.	.	25	158
25.967	*	.	.	.	25	157
26.600		0.9146	0.0854	0.0164	26	156
26.667	*	.	.	.	26	155
27.400	*	.	.	.	26	154
28.233	*	.	.	.	26	153
28.800	*	.	.	.	26	152
28.833	*	.	.	.	26	151
29.133	*	.	.	.	26	150

The LIFETEST Procedure

Product-Limit Survival Estimates						
survtimeMo		Survival	Failure	Survival Standard Error	Number Failed	Number Left
29.233	*	.	.	.	26	149
29.500	*	.	.	.	26	148
29.567	*	.	.	.	26	147
29.767	*	.	.	.	26	146
29.900	*	.	.	.	26	145
30.267	*	.	.	.	26	144
30.267	*	.	.	.	26	143
30.500	*	.	.	.	26	142
30.600	*	.	.	.	26	141
30.667	*	.	.	.	26	140
30.733	*	.	.	.	26	139
30.900	*	.	.	.	26	138
30.933	*	.	.	.	26	137
31.367	*	.	.	.	26	136
31.633	*	.	.	.	26	135
31.800	*	.	.	.	26	134
31.867	*	.	.	.	26	133
31.867	*	.	.	.	26	132
31.900	*	.	.	.	26	131
32.067	*	.	.	.	26	130
32.100	*	.	.	.	26	129
33.100	*	.	.	.	26	128
33.667	*	.	.	.	26	127
33.700	*	.	.	.	26	126
34.233	*	.	.	.	26	125
34.433	*	.	.	.	26	124
34.500	*	.	.	.	26	123
35.133	*	.	.	.	26	122
35.300	*	.	.	.	26	121
35.467	*	.	.	.	26	120
35.833	*	.	.	.	26	119
36.133	*	.	.	.	26	118
36.700	*	.	.	.	26	117
36.700	*	.	.	.	26	116
36.767	*	.	.	.	26	115

The LIFETEST Procedure

Product-Limit Survival Estimates						
survtimeMo		Survival	Failure	Survival Standard Error	Number Failed	Number Left
37.033	*	.	.	.	26	114
37.167	*	.	.	.	26	113
37.500		0.9065	0.0935	0.0181	27	112
37.500	*	.	.	.	27	111
38.167	*	.	.	.	27	110
38.200	*	.	.	.	27	109
38.400	*	.	.	.	27	108
38.500	*	.	.	.	27	107
38.767	*	.	.	.	27	106
38.900	*	.	.	.	27	105
39.600	*	.	.	.	27	104
40.067	*	.	.	.	27	103
40.100	*	.	.	.	27	102
40.300	*	.	.	.	27	101
41.233	*	.	.	.	27	100
41.467	*	.	.	.	27	99
41.900	*	.	.	.	27	98
41.967	*	.	.	.	27	97
42.133	*	.	.	.	27	96
42.500	*	.	.	.	27	95
42.667	*	.	.	.	27	94
42.767	*	.	.	.	27	93
42.767	*	.	.	.	27	92
42.867	*	.	.	.	27	91
43.067	*	.	.	.	27	90
43.333	*	.	.	.	27	89
43.567	*	.	.	.	27	88
43.833	*	.	.	.	27	87
43.933	*	.	.	.	27	86
44.200	*	.	.	.	27	85
44.367	*	.	.	.	27	84
44.533	*	.	.	.	27	83
44.733	*	.	.	.	27	82
46.400	*	.	.	.	27	81
46.567	*	.	.	.	27	80

The LIFETEST Procedure

Product-Limit Survival Estimates						
survtimeMo		Survival	Failure	Survival Standard Error	Number Failed	Number Left
46.733	*	.	.	.	27	79
49.567	*	.	.	.	27	78
50.000	*	.	.	.	27	77
50.100	*	.	.	.	27	76
50.567	*	.	.	.	27	75
51.133	*	.	.	.	27	74
51.333	*	.	.	.	27	73
51.600	*	.	.	.	27	72
51.633	*	.	.	.	27	71
51.867	*	.	.	.	27	70
52.433	*	.	.	.	27	69
52.500	*	.	.	.	27	68
53.967	*	.	.	.	27	67
54.500	*	.	.	.	27	66
57.067	*	.	.	.	27	65
57.067	*	.	.	.	27	64
58.433	*	.	.	.	27	63
59.833	*	.	.	.	27	62
60.433	*	.	.	.	27	61
60.800	*	.	.	.	27	60
61.033	*	.	.	.	27	59
61.533	*	.	.	.	27	58
62.933	*	.	.	.	27	57
63.333	*	.	.	.	27	56
63.367	*	.	.	.	27	55
63.633	*	.	.	.	27	54
65.733	*	.	.	.	27	53
66.667	*	.	.	.	27	52
67.167	*	.	.	.	27	51
67.267	*	.	.	.	27	50
67.600	*	.	.	.	27	49
67.600	*	.	.	.	27	48
67.833	*	.	.	.	27	47
68.433	*	.	.	.	27	46
68.733	*	.	.	.	27	45

The LIFETEST Procedure

Product-Limit Survival Estimates						
survtimeMo		Survival	Failure	Survival Standard Error	Number Failed	Number Left
68.900	*	.	.	.	27	44
68.900	*	.	.	.	27	43
71.467	*	.	.	.	27	42
72.333	*	.	.	.	27	41
73.233	*	.	.	.	27	40
75.100	*	.	.	.	27	39
75.600	*	.	.	.	27	38
77.867	*	.	.	.	27	37
78.800	*	.	.	.	27	36
79.700	*	.	.	.	27	35
80.667	*	.	.	.	27	34
80.767	*	.	.	.	27	33
82.167	*	.	.	.	27	32
82.367	*	.	.	.	27	31
83.700	*	.	.	.	27	30
84.600	*	.	.	.	27	29
85.533	*	.	.	.	27	28
85.533	*	.	.	.	27	27
85.633	*	.	.	.	27	26
85.767	*	.	.	.	27	25
86.100	*	.	.	.	27	24
86.433	*	.	.	.	27	23
86.867	*	.	.	.	27	22
87.200	*	.	.	.	27	21
87.433	*	.	.	.	27	20
87.500	*	.	.	.	27	19
88.467	*	.	.	.	27	18
89.033	*	.	.	.	27	17
90.367	*	.	.	.	27	16
95.533	*	.	.	.	27	15
96.700	*	.	.	.	27	14
97.467	*	.	.	.	27	13
97.700	*	.	.	.	27	12
98.100	*	.	.	.	27	11
98.733	*	.	.	.	27	10

The LIFETEST Procedure

Product-Limit Survival Estimates						
survtimeMo		Survival	Failure	Survival Standard Error	Number Failed	Number Left
100.233	*	.	.	.	27	9
101.667	*	.	.	.	27	8
102.067	*	.	.	.	27	7
102.500	*	.	.	.	27	6
102.567	*	.	.	.	27	5
102.667	*	.	.	.	27	4
103.000	*	.	.	.	27	3
107.267	*	.	.	.	27	2
108.733	*	.	.	.	27	1
113.267	*	.	.	.	27	0

Note: The marked survival times are censored observations.

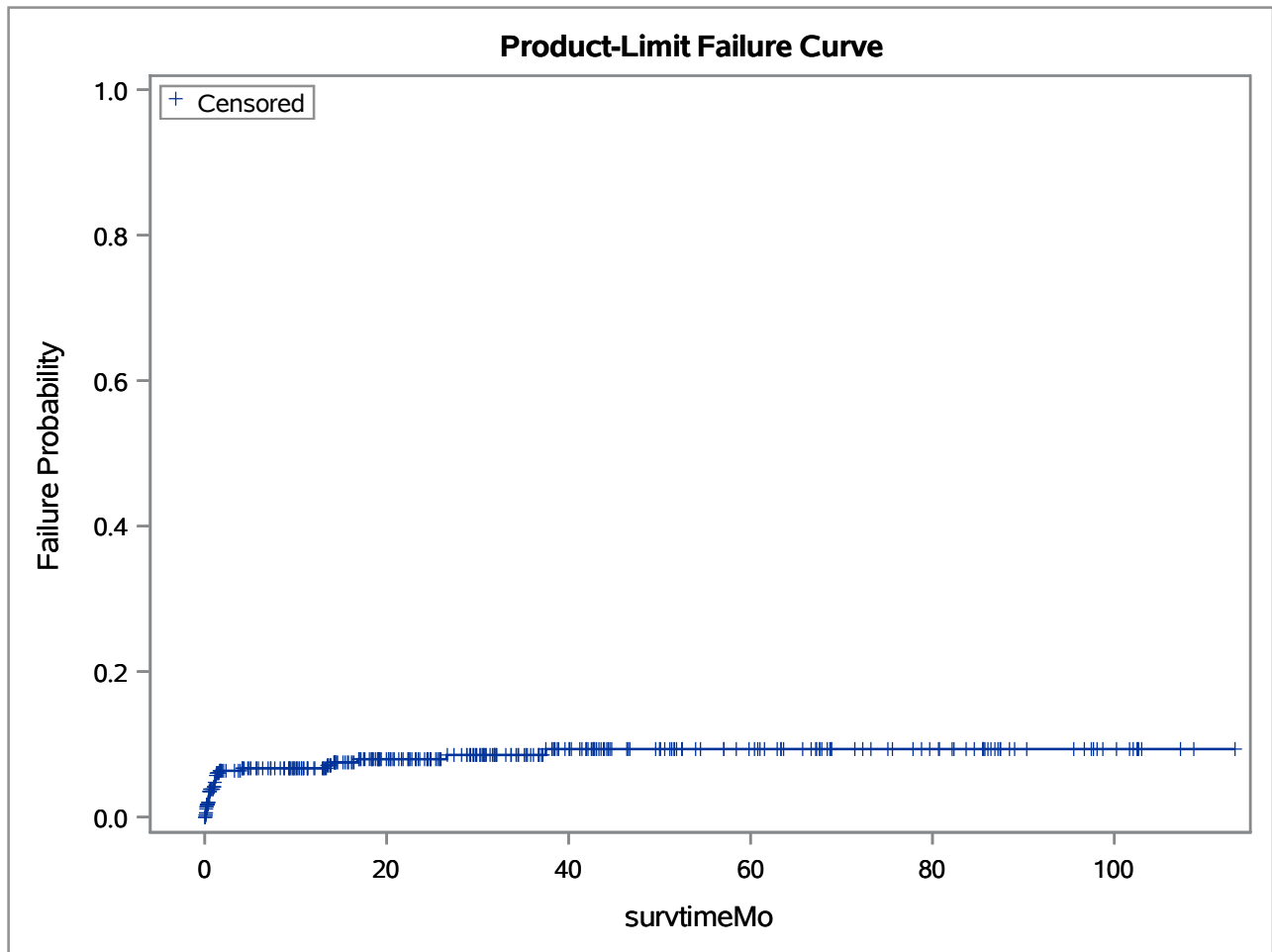
Summary Statistics for Time Variable survtimeMo

Quartile Estimates				
Percent	Point Estimate	95% Confidence Interval		
		Transform	[Lower	Upper)
75	.	LOGLOG	.	.
50	.	LOGLOG	.	.
25	.	LOGLOG	.	.

Mean	Standard Error
34.694	0.541

Note: The mean survival time and its standard error were underestimated because the largest observation was censored and the estimation was restricted to the largest event time.

The LIFETEST Procedure



Summary of the Number of Censored and Uncensored Values			
Total	Failed	Censored	Percent Censored
359	27	332	92.48

The LIFETEST Procedure

Product-Limit Survival Estimates						
survtimeMo		Survival	Failure	Survival Standard Error	Number Failed	Number Left
0.000		1.0000	0	0	0	359
0.033	*	.	.	.	0	358
0.033	*	.	.	.	0	357
0.033	*	.	.	.	0	356
0.067	*	.	.	.	0	355
0.100		0.9972	0.00282	0.00281	1	354
0.100	*	.	.	.	1	353
0.100	*	.	.	.	1	352
0.100	*	.	.	.	1	351
0.133		0.9943	0.00566	0.00399	2	350
0.133	*	.	.	.	2	349
0.133	*	.	.	.	2	348
0.167		.	.	.	3	347
0.167		0.9886	0.0114	0.00565	4	346
0.167	*	.	.	.	4	345
0.200		0.9858	0.0142	0.00632	5	344
0.200	*	.	.	.	5	343
0.200	*	.	.	.	5	342
0.200	*	.	.	.	5	341
0.233		0.9829	0.0171	0.00693	6	340
0.233	*	.	.	.	6	339
0.233	*	.	.	.	6	338
0.233	*	.	.	.	6	337
0.267	*	.	.	.	6	336
0.267	*	.	.	.	6	335
0.300	*	.	.	.	6	334
0.300	*	.	.	.	6	333
0.300	*	.	.	.	6	332
0.300	*	.	.	.	6	331
0.333	*	.	.	.	6	330
0.333	*	.	.	.	6	329
0.333	*	.	.	.	6	328
0.367		0.9799	0.0201	0.00753	7	327
0.367	*	.	.	.	7	326
0.400	*	.	.	.	7	325

The LIFETEST Procedure

Product-Limit Survival Estimates						
survtimeMo		Survival	Failure	Survival Standard Error	Number Failed	Number Left
0.400	*	.	.	.	7	324
0.433		0.9769	0.0231	0.00809	8	323
0.467		.	.	.	9	322
0.467		0.9708	0.0292	0.00910	10	321
0.500		.	.	.	11	320
0.500		0.9648	0.0352	0.0100	12	319
0.500	*	.	.	.	12	318
0.500	*	.	.	.	12	317
0.567	*	.	.	.	12	316
0.567	*	.	.	.	12	315
0.600		0.9617	0.0383	0.0104	13	314
0.600	*	.	.	.	13	313
0.600	*	.	.	.	13	312
0.700	*	.	.	.	13	311
0.767	*	.	.	.	13	310
0.900	*	.	.	.	13	309
0.900	*	.	.	.	13	308
0.933		0.9586	0.0414	0.0109	14	307
1.000	*	.	.	.	14	306
1.033	*	.	.	.	14	305
1.033	*	.	.	.	14	304
1.067		.	.	.	15	303
1.067		0.9523	0.0477	0.0117	16	302
1.100	*	.	.	.	16	301
1.167		.	.	.	17	300
1.167		.	.	.	18	299
1.167		0.9428	0.0572	0.0128	19	298
1.233	*	.	.	.	19	297
1.267		0.9396	0.0604	0.0131	20	296
1.300	*	.	.	.	20	295
1.333	*	.	.	.	20	294
1.400	*	.	.	.	20	293
1.433	*	.	.	.	20	292
1.500	*	.	.	.	20	291
1.567	*	.	.	.	20	290

The LIFETEST Procedure

Product-Limit Survival Estimates						
survtimeMo		Survival	Failure	Survival Standard Error	Number Failed	Number Left
1.633		0.9364	0.0636	0.0135	21	289
1.633	*	.	.	.	21	288
1.700	*	.	.	.	21	287
1.700	*	.	.	.	21	286
1.733	*	.	.	.	21	285
1.800	*	.	.	.	21	284
1.900	*	.	.	.	21	283
2.067	*	.	.	.	21	282
2.333	*	.	.	.	21	281
3.267	*	.	.	.	21	280
3.700	*	.	.	.	21	279
3.900	*	.	.	.	21	278
4.100		0.9330	0.0670	0.0138	22	277
4.133	*	.	.	.	22	276
4.167	*	.	.	.	22	275
4.167	*	.	.	.	22	274
4.333	*	.	.	.	22	273
4.733	*	.	.	.	22	272
4.900	*	.	.	.	22	271
5.067	*	.	.	.	22	270
5.667	*	.	.	.	22	269
5.700	*	.	.	.	22	268
5.900	*	.	.	.	22	267
6.367	*	.	.	.	22	266
6.967	*	.	.	.	22	265
7.233	*	.	.	.	22	264
7.267	*	.	.	.	22	263
7.700	*	.	.	.	22	262
8.300	*	.	.	.	22	261
8.700	*	.	.	.	22	260
8.767	*	.	.	.	22	259
9.233	*	.	.	.	22	258
9.300	*	.	.	.	22	257
9.333	*	.	.	.	22	256
9.400	*	.	.	.	22	255

The LIFETEST Procedure

Product-Limit Survival Estimates						
survtimeMo		Survival	Failure	Survival Standard Error	Number Failed	Number Left
9.600	*	.	.	.	22	254
9.700	*	.	.	.	22	253
9.800	*	.	.	.	22	252
9.833	*	.	.	.	22	251
10.033	*	.	.	.	22	250
10.100	*	.	.	.	22	249
10.233	*	.	.	.	22	248
10.400	*	.	.	.	22	247
10.633	*	.	.	.	22	246
10.633	*	.	.	.	22	245
10.833	*	.	.	.	22	244
10.900	*	.	.	.	22	243
11.267	*	.	.	.	22	242
11.300	*	.	.	.	22	241
11.333	*	.	.	.	22	240
12.000	*	.	.	.	22	239
12.100	*	.	.	.	22	238
12.933	*	.	.	.	22	237
13.033	*	.	.	.	22	236
13.100	*	.	.	.	22	235
13.233	*	.	.	.	22	234
13.367	*	.	.	.	22	233
13.400		0.9290	0.0710	0.0143	23	232
13.467	*	.	.	.	23	231
13.567	*	.	.	.	23	230
13.567	*	.	.	.	23	229
13.767	*	.	.	.	23	228
13.833	*	.	.	.	23	227
13.833	*	.	.	.	23	226
13.833	*	.	.	.	23	225
13.933		0.9249	0.0751	0.0149	24	224
14.200	*	.	.	.	24	223
14.300	*	.	.	.	24	222
14.300	*	.	.	.	24	221
14.300	*	.	.	.	24	220

The LIFETEST Procedure

Product-Limit Survival Estimates						
survtimeMo		Survival	Failure	Survival Standard Error	Number Failed	Number Left
14.333	*	.	.	.	24	219
14.367	*	.	.	.	24	218
14.500	*	.	.	.	24	217
14.600	*	.	.	.	24	216
15.200	*	.	.	.	24	215
15.433	*	.	.	.	24	214
15.700	*	.	.	.	24	213
15.800	*	.	.	.	24	212
16.133	*	.	.	.	24	211
16.233	*	.	.	.	24	210
16.400	*	.	.	.	24	209
16.767		0.9204	0.0796	0.0154	25	208
16.933	*	.	.	.	25	207
16.967	*	.	.	.	25	206
17.100	*	.	.	.	25	205
17.167	*	.	.	.	25	204
17.467	*	.	.	.	25	203
17.600	*	.	.	.	25	202
18.100	*	.	.	.	25	201
18.300	*	.	.	.	25	200
18.367	*	.	.	.	25	199
18.433	*	.	.	.	25	198
18.533	*	.	.	.	25	197
18.767	*	.	.	.	25	196
19.000	*	.	.	.	25	195
19.067	*	.	.	.	25	194
19.067	*	.	.	.	25	193
19.067	*	.	.	.	25	192
19.200	*	.	.	.	25	191
19.200	*	.	.	.	25	190
19.300	*	.	.	.	25	189
19.400	*	.	.	.	25	188
19.967	*	.	.	.	25	187
20.200	*	.	.	.	25	186
20.233	*	.	.	.	25	185

The LIFETEST Procedure

Product-Limit Survival Estimates						
survtimeMo		Survival	Failure	Survival Standard Error	Number Failed	Number Left
20.400	*	.	.	.	25	184
20.467	*	.	.	.	25	183
20.700	*	.	.	.	25	182
20.833	*	.	.	.	25	181
21.333	*	.	.	.	25	180
21.633	*	.	.	.	25	179
21.800	*	.	.	.	25	178
22.333	*	.	.	.	25	177
22.400	*	.	.	.	25	176
22.433	*	.	.	.	25	175
22.567	*	.	.	.	25	174
22.767	*	.	.	.	25	173
23.167	*	.	.	.	25	172
23.233	*	.	.	.	25	171
23.467	*	.	.	.	25	170
23.633	*	.	.	.	25	169
24.167	*	.	.	.	25	168
24.433	*	.	.	.	25	167
24.500	*	.	.	.	25	166
24.567	*	.	.	.	25	165
24.800	*	.	.	.	25	164
24.800	*	.	.	.	25	163
24.867	*	.	.	.	25	162
25.400	*	.	.	.	25	161
25.600	*	.	.	.	25	160
25.800	*	.	.	.	25	159
25.833	*	.	.	.	25	158
25.967	*	.	.	.	25	157
26.600		0.9146	0.0854	0.0164	26	156
26.667	*	.	.	.	26	155
27.400	*	.	.	.	26	154
28.233	*	.	.	.	26	153
28.800	*	.	.	.	26	152
28.833	*	.	.	.	26	151
29.133	*	.	.	.	26	150

The LIFETEST Procedure

Product-Limit Survival Estimates						
survtimeMo		Survival	Failure	Survival Standard Error	Number Failed	Number Left
29.233	*	.	.	.	26	149
29.500	*	.	.	.	26	148
29.567	*	.	.	.	26	147
29.767	*	.	.	.	26	146
29.900	*	.	.	.	26	145
30.267	*	.	.	.	26	144
30.267	*	.	.	.	26	143
30.500	*	.	.	.	26	142
30.600	*	.	.	.	26	141
30.667	*	.	.	.	26	140
30.733	*	.	.	.	26	139
30.900	*	.	.	.	26	138
30.933	*	.	.	.	26	137
31.367	*	.	.	.	26	136
31.633	*	.	.	.	26	135
31.800	*	.	.	.	26	134
31.867	*	.	.	.	26	133
31.867	*	.	.	.	26	132
31.900	*	.	.	.	26	131
32.067	*	.	.	.	26	130
32.100	*	.	.	.	26	129
33.100	*	.	.	.	26	128
33.667	*	.	.	.	26	127
33.700	*	.	.	.	26	126
34.233	*	.	.	.	26	125
34.433	*	.	.	.	26	124
34.500	*	.	.	.	26	123
35.133	*	.	.	.	26	122
35.300	*	.	.	.	26	121
35.467	*	.	.	.	26	120
35.833	*	.	.	.	26	119
36.133	*	.	.	.	26	118
36.700	*	.	.	.	26	117
36.700	*	.	.	.	26	116
36.767	*	.	.	.	26	115

The LIFETEST Procedure

Product-Limit Survival Estimates						
survtimeMo		Survival	Failure	Survival Standard Error	Number Failed	Number Left
37.033	*	.	.	.	26	114
37.167	*	.	.	.	26	113
37.500		0.9065	0.0935	0.0181	27	112
37.500	*	.	.	.	27	111
38.167	*	.	.	.	27	110
38.200	*	.	.	.	27	109
38.400	*	.	.	.	27	108
38.500	*	.	.	.	27	107
38.767	*	.	.	.	27	106
38.900	*	.	.	.	27	105
39.600	*	.	.	.	27	104
40.067	*	.	.	.	27	103
40.100	*	.	.	.	27	102
40.300	*	.	.	.	27	101
41.233	*	.	.	.	27	100
41.467	*	.	.	.	27	99
41.900	*	.	.	.	27	98
41.967	*	.	.	.	27	97
42.133	*	.	.	.	27	96
42.500	*	.	.	.	27	95
42.667	*	.	.	.	27	94
42.767	*	.	.	.	27	93
42.767	*	.	.	.	27	92
42.867	*	.	.	.	27	91
43.067	*	.	.	.	27	90
43.333	*	.	.	.	27	89
43.567	*	.	.	.	27	88
43.833	*	.	.	.	27	87
43.933	*	.	.	.	27	86
44.200	*	.	.	.	27	85
44.367	*	.	.	.	27	84
44.533	*	.	.	.	27	83
44.733	*	.	.	.	27	82
46.400	*	.	.	.	27	81
46.567	*	.	.	.	27	80

The LIFETEST Procedure

Product-Limit Survival Estimates						
survtimeMo		Survival	Failure	Survival Standard Error	Number Failed	Number Left
46.733	*	.	.	.	27	79
49.567	*	.	.	.	27	78
50.000	*	.	.	.	27	77
50.100	*	.	.	.	27	76
50.567	*	.	.	.	27	75
51.133	*	.	.	.	27	74
51.333	*	.	.	.	27	73
51.600	*	.	.	.	27	72
51.633	*	.	.	.	27	71
51.867	*	.	.	.	27	70
52.433	*	.	.	.	27	69
52.500	*	.	.	.	27	68
53.967	*	.	.	.	27	67
54.500	*	.	.	.	27	66
57.067	*	.	.	.	27	65
57.067	*	.	.	.	27	64
58.433	*	.	.	.	27	63
59.833	*	.	.	.	27	62
60.433	*	.	.	.	27	61
60.800	*	.	.	.	27	60
61.033	*	.	.	.	27	59
61.533	*	.	.	.	27	58
62.933	*	.	.	.	27	57
63.333	*	.	.	.	27	56
63.367	*	.	.	.	27	55
63.633	*	.	.	.	27	54
65.733	*	.	.	.	27	53
66.667	*	.	.	.	27	52
67.167	*	.	.	.	27	51
67.267	*	.	.	.	27	50
67.600	*	.	.	.	27	49
67.600	*	.	.	.	27	48
67.833	*	.	.	.	27	47
68.433	*	.	.	.	27	46
68.733	*	.	.	.	27	45

The LIFETEST Procedure

Product-Limit Survival Estimates						
survtimeMo		Survival	Failure	Survival Standard Error	Number Failed	Number Left
68.900	*	.	.	.	27	44
68.900	*	.	.	.	27	43
71.467	*	.	.	.	27	42
72.333	*	.	.	.	27	41
73.233	*	.	.	.	27	40
75.100	*	.	.	.	27	39
75.600	*	.	.	.	27	38
77.867	*	.	.	.	27	37
78.800	*	.	.	.	27	36
79.700	*	.	.	.	27	35
80.667	*	.	.	.	27	34
80.767	*	.	.	.	27	33
82.167	*	.	.	.	27	32
82.367	*	.	.	.	27	31
83.700	*	.	.	.	27	30
84.600	*	.	.	.	27	29
85.533	*	.	.	.	27	28
85.533	*	.	.	.	27	27
85.633	*	.	.	.	27	26
85.767	*	.	.	.	27	25
86.100	*	.	.	.	27	24
86.433	*	.	.	.	27	23
86.867	*	.	.	.	27	22
87.200	*	.	.	.	27	21
87.433	*	.	.	.	27	20
87.500	*	.	.	.	27	19
88.467	*	.	.	.	27	18
89.033	*	.	.	.	27	17
90.367	*	.	.	.	27	16
95.533	*	.	.	.	27	15
96.700	*	.	.	.	27	14
97.467	*	.	.	.	27	13
97.700	*	.	.	.	27	12
98.100	*	.	.	.	27	11
98.733	*	.	.	.	27	10

The LIFETEST Procedure

Product-Limit Survival Estimates						
survtimeMo		Survival	Failure	Survival Standard Error	Number Failed	Number Left
100.233	*	.	.	.	27	9
101.667	*	.	.	.	27	8
102.067	*	.	.	.	27	7
102.500	*	.	.	.	27	6
102.567	*	.	.	.	27	5
102.667	*	.	.	.	27	4
103.000	*	.	.	.	27	3
107.267	*	.	.	.	27	2
108.733	*	.	.	.	27	1
113.267	*	.	.	.	27	0

Note: The marked survival times are censored observations.

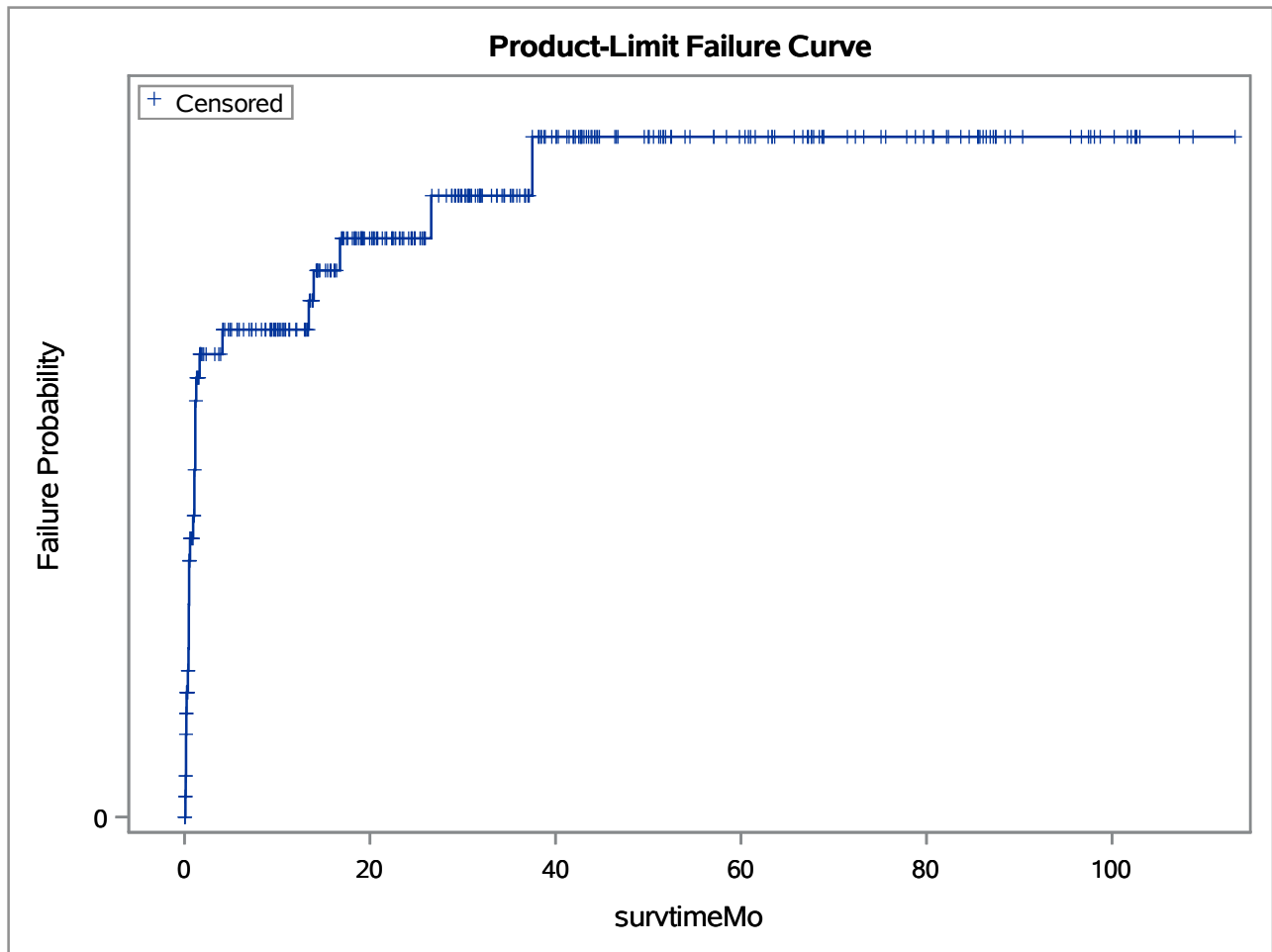
Summary Statistics for Time Variable survtimeMo

Quartile Estimates				
Percent	Point Estimate	95% Confidence Interval		
		Transform	[Lower	Upper)
75	.	LOGLOG	.	.
50	.	LOGLOG	.	.
25	.	LOGLOG	.	.

Mean	Standard Error
34.694	0.541

Note: The mean survival time and its standard error were underestimated because the largest observation was censored and the estimation was restricted to the largest event time.

The LIFETEST Procedure



Summary of the Number of Censored and Uncensored Values			
Total	Failed	Censored	Percent Censored
359	27	332	92.48