

Enterprise Miner – fremdeles et velfungerende SAS produkt

Mathias Lanner

Principal Adviser, Advanced Analytics & AI

SAS Institute





Introduction to Enterprise Miner

sas.com





Building models

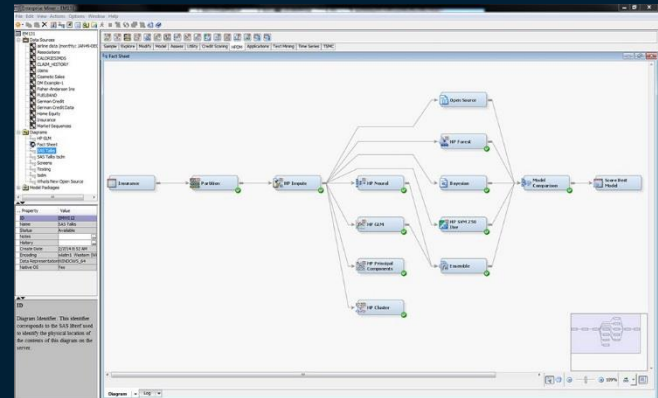
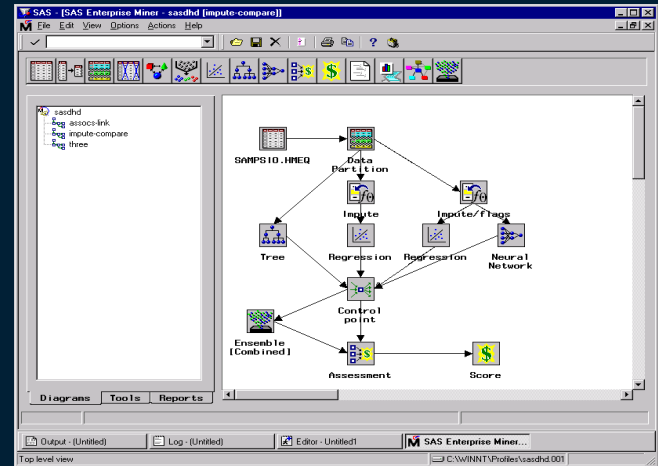


Code generator

Enterprise Miner

Quick facts

- First release version 2.01 1998
- Process flow diagram drag and drop
- SEMMA Methodology
- NODES
- BASE and STAT





SEMMA

sas.com

SEMMA



Sample

- Partition
- Sampling
- Filter



Explore

- Descriptive Analysis
- Plots
- Variable selection



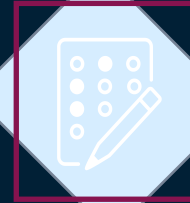
Modify

- Transformations
- Imputation
- Outliers



Model

- Supervised-learning
- Unsupervised-learning
- Ensemble



Assessment

- Model tournament
- Lift, Roc etc
- Fit Statistics



Operationalize Models

- Optimized Scorecode



Complete List of SAS Enterprise Miner 14.3 nodes

SAMPLE	Append	Data Partition	File Import	Filter	Merge	Sample	Input Data			
EXPLORE	Association Cluster	Graph Explore	Variable Clustering	DMDB MultiPlot	Market Basket StatExplore	Link Analysis Path Analysis	Variable Selection	SOM/Kohonen Text Mining (7)*		
MODIFY	Drop	Impute	Interactive Binning	Principal Components	Replacement	Rules Builder	Transform Variables			
MODEL	Decision Tree	AutoNeural Regression	Neural Network	Partial Least Squares	Dmine Regression	DM Neural Ensemble	Rule Induction	Gradient Boosting	LARS MBR	Two Stage Model Import
	Incremental Response	Survival Analysis	Credit Scoring*	TS Correlation	TS Data Prep	TS Dimension Reduction	TS Decomp.	TS Similarity	TS Exponential Smoothing	
	HP Explore HP Impute	HP Regression HP Text Mine*	HP Transform	HP Variable Selection	HP Neural HP Forest	HP Decision Tree	HP Data Partition	HP GLM HP SVM	HP Cluster HP BNET	HP Prin Comp
ASSESS	Cutoff	Decisions	Model Comparison	Score	Segment Profile					
UTILITY	Control Point	End Groups Start Groups	Open Source Integration	Reporter	Score Code Export	Metadata	SAS Code Ext Demo	SAS Viya Code	Save Data	Register Metadata

* Add-On

Demonstrations

Explore data in Enterprise Miner



Introduce variable clustering – remove redundant variable using Proc Varcluster



Modify data before modelling, transformation/imputation



Building models and Assessment->generate scorecode for deployment





sas.com

