

FANS Visual Analytics Netværksmøde

1/12-2021 – Virtuelt/Teams

Kl. 9.30 – 12.30



Frans Holm

SAS FANS Denmark Manager



Frans.Holm@sas.com

Copyright © SAS Institute Inc. All rights reserved.

FANS
Visual Analytics
Netværksmøde

Dagsorden

- **Velkomst**
 - v. Frans Holm, SAS
- **Network Analysis using SAS Visual Analytics (In English)**
 - By Falko Schulz, SAS R&D (Australia)
- **Pause**
- **Velkomst fortsat**
- **Hvem er vi?**
 - DLR Kredit, Christian Handberg
 - Sikkerhedstyrelsen
- **Visual Analytics versioner**
 - v. Frans Holm & Torben Skov, SAS
- **Pause**
- **Governance – hvad gør vi!**
 - v. Per Andersen, Topdanmark
- **Governance – hvad gør I?**
 - v. Frans Holm, SAS
- **Performance**
 - v. Frans Holm & Torben Skov, SAS
- **Afslutning & lodtrækning**
 - v. Frans Holm, SAS

Copyright © SAS Institute Inc. All rights reserved.

Network Analysis using SAS Visual Analytics

by Falko Schulz, Business Intelligence Visualization R&D, SAS

Du kan stadig at deltage i FANS lodtrækningen

Pause – Pause – Pause - Pause

Vi starter igen kl. 10.20

FANS
Visual Analytics
Netværksmøde

Dagsorden

- **Velkomst**
 - v. Frans Holm, SAS
- **Network Analysis using SAS Visual Analytics (In English)**
 - By Falko Schulz, SAS R&D (Australia)
- **Pause**
- **Velkomst fortsat**
- **Hvem er vi?**
 - DLR Kredit, Christian Handberg
 - Sikkerhedstyrelsen
- **Visual Analytics versioner**
 - v. Frans Holm & Torben Skov, SAS
- **Pause**
- **Governance – hvad gør vi!**
 - v. Topdanmark
- **Governance – hvad gør I?**
 - v. Frans Holm, SAS
- **Performance**
 - v. Frans Holm & Torben Skov, SAS
- **Afslutning & lodtrækning**
 - v. Frans Holm, SAS

Copyright © SAS Institute Inc. All rights reserved.

FANS
Visual Analytics
Netværksmøde

Styregruppe

Styregruppe:

- Malou Peterson Porst (Odense Kommune)
- Andreas Wiwe (Aarhus Kommune)
- Torben Skov (SAS)
- Frans Holm (SAS)

Tak fordi du er taler

- Opfind ikke noget nyt!
- Du behøver ikke have svaret!



Diverse Nyheder

<https://communities.sas.com/t5/SAS-Communities-Library/Build-a-date-in-SAS-Visual-Analytics-reports/ta-p/760983>

Build a date in SAS
Visual Analytics
reports

New Calculated Item

Name:

Result Type: Format:

Search

> Numeric (advanced)

▼ Date and Time

- DateFromMDY**
- DateFromYQ
- DatePart
- DateTimeFrom...
- DateTimeFrom...
- DayOfMonth
- DayOfWeek
- DayOfYear
- Hour
- Minute
- Month
- Now
- Quarter

DateFromMDY

- (red arrow)
- (red arrow)
- (red arrow)

Messages (0)

Choose Your SAS Journey

<https://www.sas.com/sas/offers/choose-your-sas-journey.html?referid=CS1487>

- Become a SAS Data Ninja
- Fast Track Your Viya Adoption
- Become a Viya Admin Superhero
- The Art of Data Visualization
- Next-Gen AML & Transaction Monitoring
- SAS Starter Kit
- Unmasking Fraudsters in Banking
- Data Scientist Fast Track
- The Agile SAS Environment with DevOps
- Risk Lab Evolution

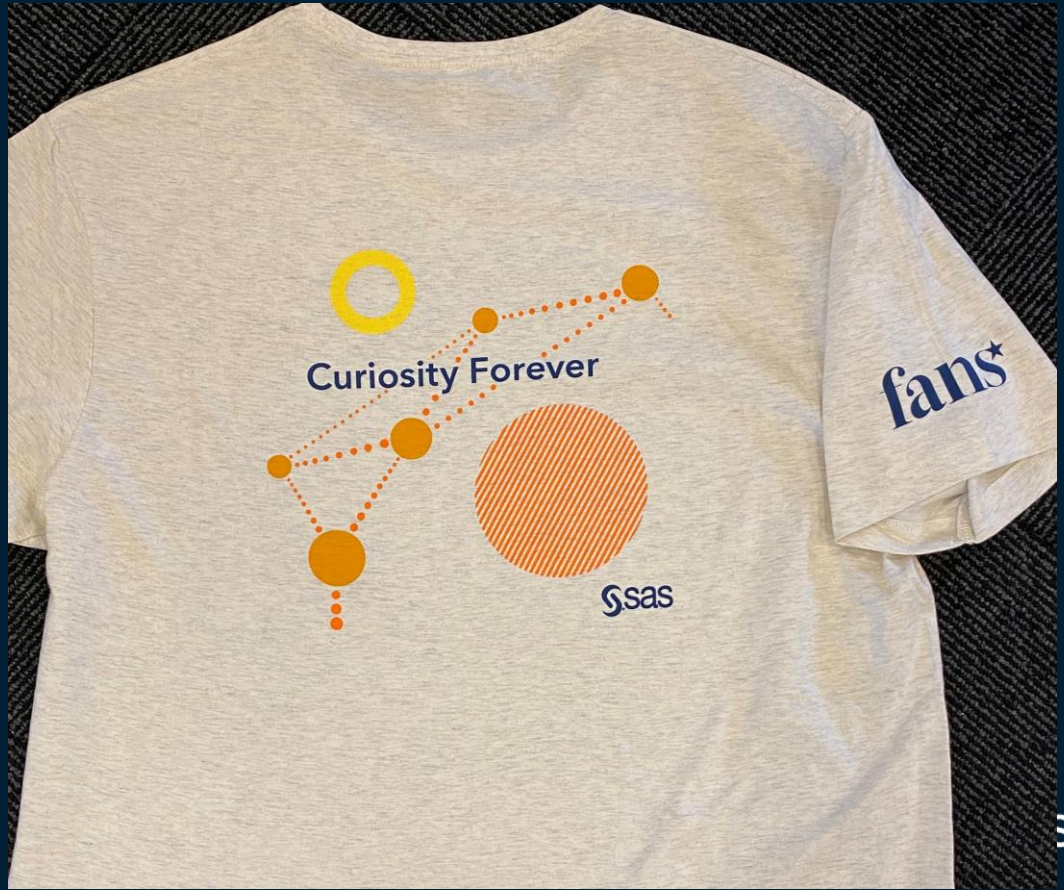
FANS 2022 medlemskaber

Kontakt Frans.Holm@sas.com – Jeg vil kontakt alle medlemmer

Package	Network Meetings	Virtual FANS Events	Social events	SAS GF / SAS AX	Curiosity Trip to Cary	SAS Local Forums	SAS Days	Free E Learning courses	SAS Certification, Learning Conference, AVT Training	Price (DKK) Standard	Price (DKK) 2022
FANS Free	Yes	Yes	No	No	No	No	No	No	No	0	0
FANS Premium Personal	Yes	Yes	Yes (1)	Yes (1)	No	Yes (1)	No	Yes (1)	Yes (10%)	3.000	750
FANS Premium Company	Yes	Yes	Yes (5)	Yes (4)	Yes (4)	Yes (10)	Yes (2)	Yes (3)	Yes (10%)	19.500	5.000

Diverse Nyheder

FANS
T-shirt



Diverse Nyheder

IPO: Initial Public Offering

SAS will become
IPO ready by 2024



JIM GOODNIGHT

CEO, SAS

FANS Lodtrækning

Vind en SAS ting!

FANS Lodtrækning

Dagens gave!



Kan være du får én af følgende farver i stedet.

FANS lodtrækning

Send mail til:

frans.holm@sas.com

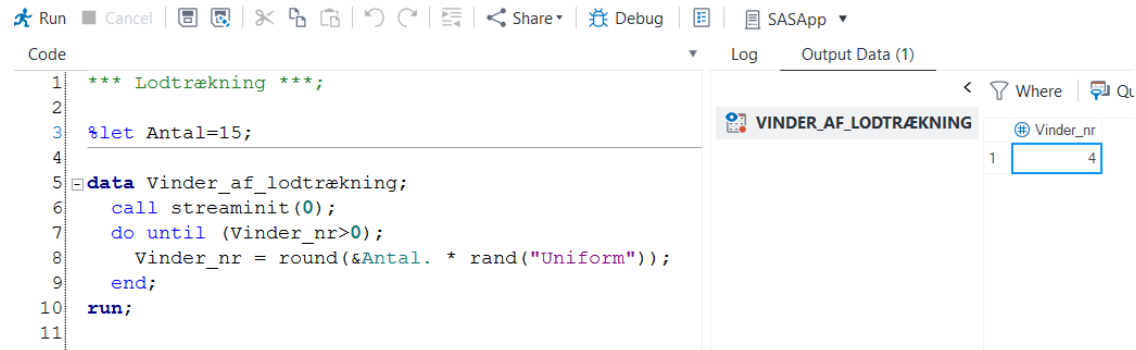
Skriv:

Subject: Lodtrækning

Mailen: Navn + Adresse

(+ størrelse på t-shirt)

Udtrækning
Hvordan:



The screenshot shows the SAS Studio interface. The top menu bar includes 'Run', 'Cancel', 'Share', 'Debug', and 'SASApp'. The main window is divided into two panes. The left pane, titled 'Code', contains the following SAS code:

```
1 *** Lodtrækning ***;
2
3 %let Antal=15;
4
5 data Vinder_af_lodtrækning;
6   call streaminit(0);
7   do until (Vinder_nr>0);
8     Vinder_nr = round(&Antal. * rand("Uniform"));
9   end;
10 run;
11
```

The right pane, titled 'Output Data (1)', shows a table with the following data:

VINDER_AF_LODTRÆKNING	
	Vinder_nr
1	4

Hvem er vi?

- DLR Kredit, Christian Handberg
- Sikkerhedsstyrelsen

Organisation, Hvilket VA-setup,
Hvad anvendes VA til,
Antal udviklere og antal brugere

Visual Analytics versioner

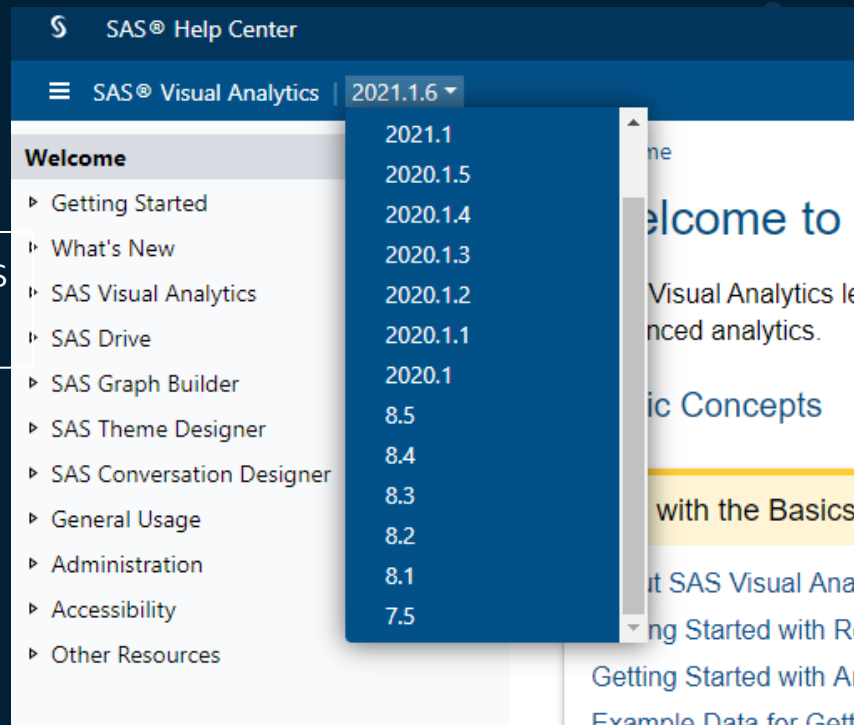
v. Frans Holm & Torben Skov, SAS

Visual Analytics

Versioner

- 7.5 (SAS9.4)
- 8.5 (Viya 3.5)
- 2021.2 LTS (Viya 4)
- 2021.2.1 Stable (Viya 4)

Kubernetes
installation



https://documentation.sas.com/doc/en/vacdc/v_010/vawlcm/home.htm

Target Release Mapping

Month	Stable	LTS
Mar 2021	2020.1.4	
April 2021	2020.1.5	
May 2021	2021.1.1	2021.1
June 2021	2021.1.2	
July 2021	2021.1.3	
Aug 2021	2021.1.4	
Sept 2021	2021.1.5	
Oct 2021	2021.1.6	
Nov 2021	2021.2.1	2021.2
Dec 2021	2021.2.2	
Jan 2022	2021.2.3	
Feb 2022	2021.2.4	
Mar 2022	2021.2.5	
April 2022	2021.2.6	
May 2022	2022.1.1	2022.1
June 2022	2022.1.2	
July	2022.1.3	

SAS versioner

Continuous Delivery Cadence

Stable: Hver måned

Long-term support (LTS): Hver 6. måned

- Man har enten en Stable eller LTS version.
- Årsnumret er koblet til året, hvor LTS versionen er fra.

Visual Analytics

Versioner og nyudvikling

- 7.5 (SAS9.4) – Ingen nyudvikling
- 8.5 (Viya 3.5) – Ingen nyudvikling
- 2021.2.2 Stable (Viya 4)
- 2022.1 LTS (Viya 4)

How often is the software released?

Continuous Delivery Cadence : Stable and LTS

- A stable version is released every month and can include new features, changes to features, and bug fixes.
 - The format of a stable version is `YYYY.n.n`, such as 2020.1.1.
- A long-term support (LTS) version is released every six months and is equivalent to the stable version that is released two months before the LTS version.
 - The format of an LTS version is `YYYY.n`, such as 2020.1.

The numbers after the year are not linked to the current month or week, they're just an incremental version counter.

How are versions incremented with each release?

- Stable versions are incremented with each monthly release, such as 2021.1.2, 2021.1.3, and so on, until 2021.1.6. After the sixth stable version, a new LTS version is released, along with the next stable version.
- For the first release of a new LTS version in a specific year, the versions are reset to include the current year and .1 and 1.1 for the new LTS version and next stable version, respectively.
- For the second release of a new LTS version in a specific year, the year does not get reset, and the versions are incremented to .2 and 2.1 for the new LTS version and next stable version, respectively.

The year in the LTS version does not necessarily reflect the current year.

2020.1 from Nov 2020 through April 2021

2021.1 from April 2021 through October 2021

Continuous Delivery Cadence

Comparing Release Types (1/2)

	Stable releases	LTS releases
Frequency	Once a month	Every 6 months
Release includes	New features, changes to features, bug fixes, removal of features, etc.	Based on the stable release from two (2) months prior, which forms the basis of the LTS release candidate.
Support	Current stable release plus three (3) previous stable releases (or four months total)	Current LTS release plus three (3) previous LTS releases. Enables a Technical Support policy of “two years minus a day” which means customers must update at least once every two years.

Continuous Delivery Cadence

Comparing Release Types (1/2)

	Stable releases	LTS releases
Target customers	<ul style="list-style-type: none">▪ Customers willing to always operate with the most up-to-date features and bug fixes.▪ Customers looking to take advantage of the full value that SAS products have to offer.▪ Software-as-a-service customers	<ul style="list-style-type: none">▪ Customers who are not yet comfortable with SAS's continuous delivery.▪ Customers only willing to upgrade to get new features less frequently, such as once a year.▪ Customers who need to validate their environment(s) or who operate in a regulated domain.

Eksempler på nyudvikling - Demo

v. Torben Skov, SAS

Du kan stadig at deltage i FANS lodtrækningen

Pause – Pause – Pause - Pause

Vi starter igen kl. 11.25

Governance – hvad gør vi!

v. Per Andersen, Topdanmark

Governance – hvad gør I?

v. Frans Holm, SAS

Performance

System vs. Rapport/data performance

- v. Frans Holm & Torben Skov, SAS

Performance

System Performance

- Det er ikke nemt at identificere!
 - Fejl i software, Fejl ved installationen
 - Forkert sizing, Fejl i hardware, netværk eller konfigurationer
- Hvis man ikke ved, der er en udfordring – så gør man nok ikke noget!!
 - Orienter din system administrator, hvis du mener der er system udfordringer!
- Benchmark med andre afdelinger og kunder
- SAS service offering: SAS Environment Review



SAS Environment Review

Usage not
reviewed

SAS Application

Reviewed:

- Architecture
- Maintainability
- Recovery

SAS Installation

Reviewed:

- Reliability
- System settings
- Failover

Operating
system

Reviewed:

- Capacity
- Performance
- Scalability

Hardware

Kontakt: Rene.Dyrby@sas.com

Rapport/data performance

v. Torben Skov, SAS

Afslutning & lodtrækning

v. Frans Holm, SAS

A woman with long reddish-brown hair, wearing a blue denim shirt, is smiling and shaking hands with another person whose arm is visible from the right. The background is a blurred office environment with warm lighting.

Samarbejde med SAS Academic

= Studerende der anvender SAS

Samarbejde om projekter = Ekstra hænder

Potentielle nye medarbejdere med SAS kundskaber

Kontakt:

Sara.Armandi@sas.com

FANS Network Meetings & Platform Overview

Danmark – Virtuelt på Teams

- 1/12 FANS | Programming 13.30-16.30
- 2/12 FANS | Platform 9-12
- 3/12 SAS | Platform Overview 9-12
- 14/12 FANS | Customer Intelligence (Nordic) 13-14
- 26/1 AML for AML users (Nordic) 9.00-12.10 CET

FANS Lodtrækning

Dagens gave!



Kan være du får én af følgende farver i stedet.



Tak for i dag

Vi ses FANS!

Feedback modtages gerne
f.eks. i evaluering

Frans.Holm@sas.com

Copyright © SAS Institute Inc. All rights reserved.