

Planned Installation? No Problem!

SAS Talks
January 12, 2012

PLEASE STAND BY

Today's event will begin at 1:00pm EST.

Enter your telephone number in the box that appears,
and you will receive a call-back from our automated system.

If you would prefer to dial in, please call:

US Toll-Free: 1-888-682-4285

Toll/International: +1-973-368-0695

Conference Code: 4675179#

If you experience any technical difficulties,
you may contact WebEx Technical Support
at 866-229-3239.

 **#sastalks**

Planned Installation? No Problem!

SAS Talks
January 12, 2012



**THE
POWER
TO KNOW®**

Speakers



- Stacy Hobson
 - Director, Customer Loyalty and Retention
SAS Institute



- Mark Schneider
 - R&D Director, SAS



- Jawna Gardner
 - Principal Technical Support Analyst, SAS



Follow along on Twitter using #sastalks

What is a “Planned” Deployment?

- Metadata Server-based
- Examples:
 - Business Intelligence
 - Data Integration Server
 - Enterprise Miner
 - Marketing Automation
 - etc.

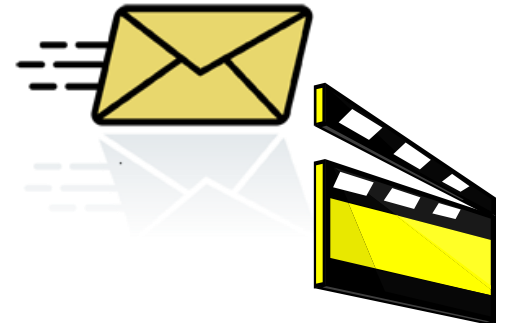
Outline

- Where do I start?
- What's in my depot?
- Before you put the key in the ignition...
- Cranking the engine
- What did I just do?
- What next?

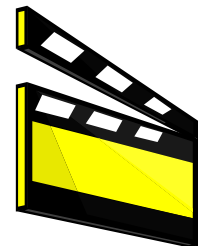
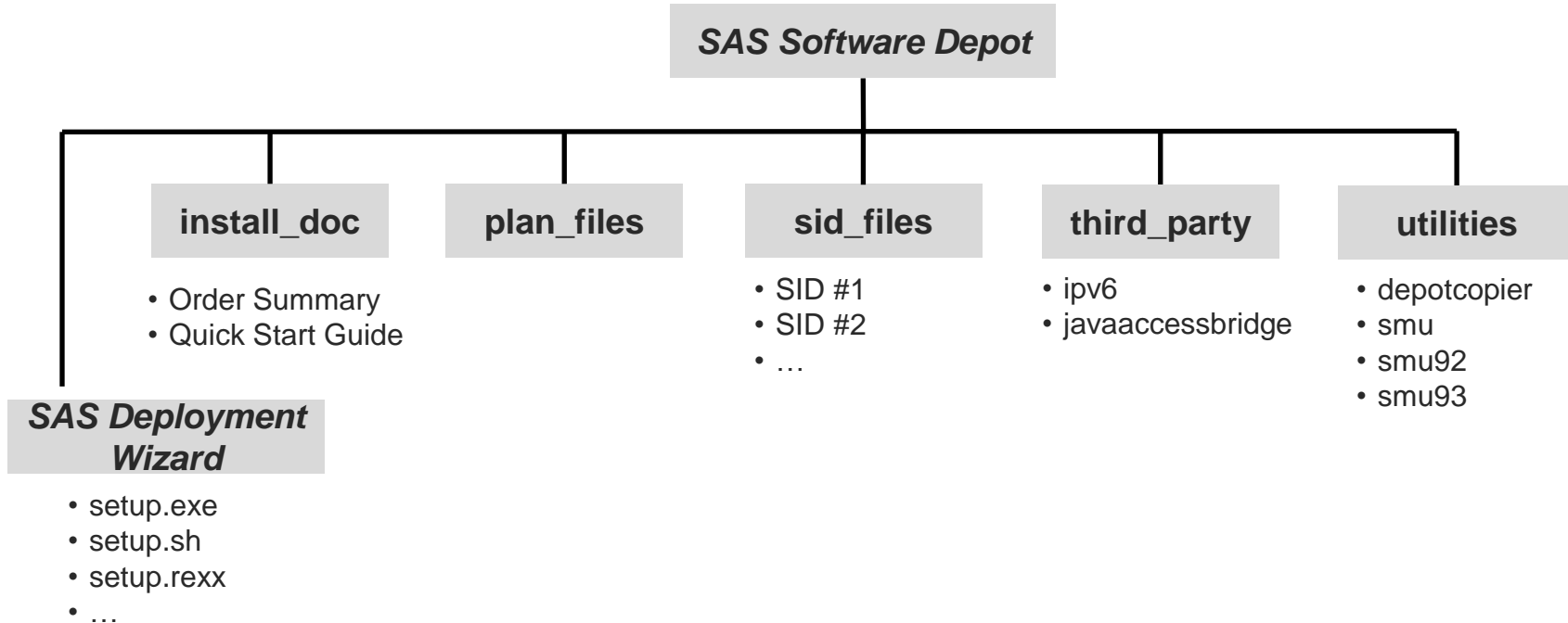


Where Do I Start?

- Software Order E-Mail
 - Download Software ([SAS Global Forum Paper 318-2010](#))
 - Quick Start Guide



What's in My Depot?



Before You Put the Key in the Ignition...

- What's your intent?
 - Installing new products
 - Migrating
 - Updating or Upgrading
- Pick a deployment plan
 - Standard plans
 - Custom plan
- Read doc!
 - support.sas.com ➔ Install Center



Before You Put the Key in the Ignition...

- Preinstall checklist
 - Userids
 - Ports
 - Third Party Software
 - Other considerations



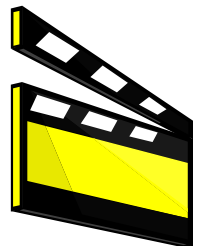
Cranking the Engine

- SAS Migration Utility (if applicable)
- [SAS Deployment Wizard](#)
 - Managing orders
 - Installing
 - Configuring
 - Updating
- Validate



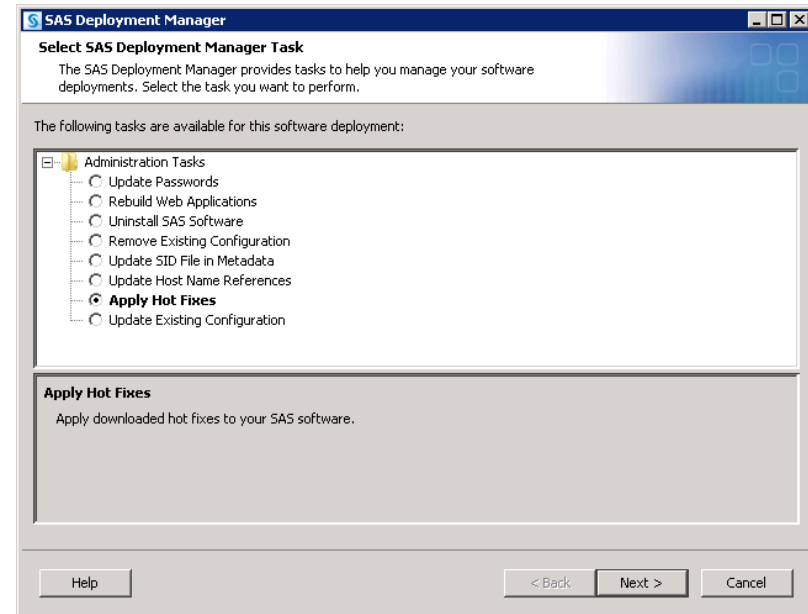
What Did I Just Do?

- Installation Directory
 - Deployment Registry: <SASHOME>\deplymntreg
 - Installation Logs: <SASHOME>\InstallMisc\InstallLogs
 - “SASROOT”:
<SASHOME>\SAS Foundation\9.3
- Configuration Directory
 - Summary Documents: <SAS-config>\Lev1\Documents
 - Configuration Logs: <SAS-config>\Lev1\Logs\Configure
 - Run-time Server Logs (default):
 - <SAS-config>\Lev1\SASMeta\MetadataServer\Logs
 - <SAS-config>\Lev1\SASApp\<server>\Logs



What Next?

- Back up!
 - SAS Global Forum paper – [312-2008: Backup and Disaster Recovery](#)
 - [System Admin Guide Best Practices](#)
- Download Hot Fixes ([SASHFADD](#))
- SAS Deployment Manager
 - Apply hot fixes
 - Update passwords
 - Rebuild Web applications
 - Uninstall/Unconfigure
 - Update host name
 - etc.



Additional Resources

- [SAS Intelligence Platform Deployment Document](#)
- [SAS Deployment Community](#) on support.sas.com
- SAS Global Forum paper – [363-2011: Anatomy of a Deployment](#)
- Upcoming live webinars
 - February 9: [Project Organization Proposal and Project Leadership Plan](#)
 - March 8: [Customer Segmentation Made Simple](#)
- [SAS Talks](#) on support.sas.com



Follow along on Twitter using #sastalks



www.sas.com