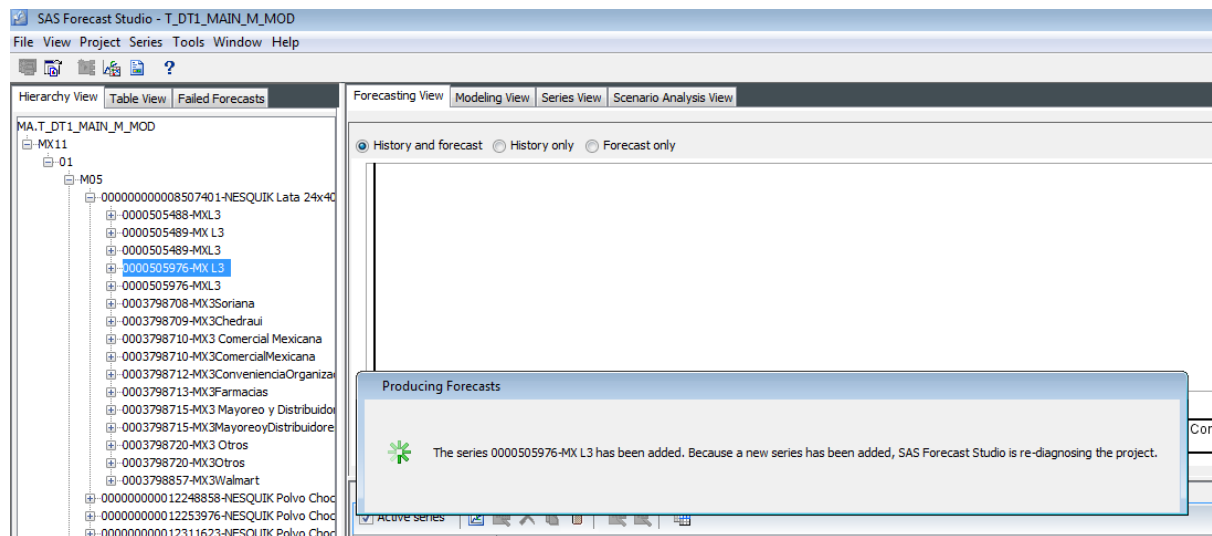
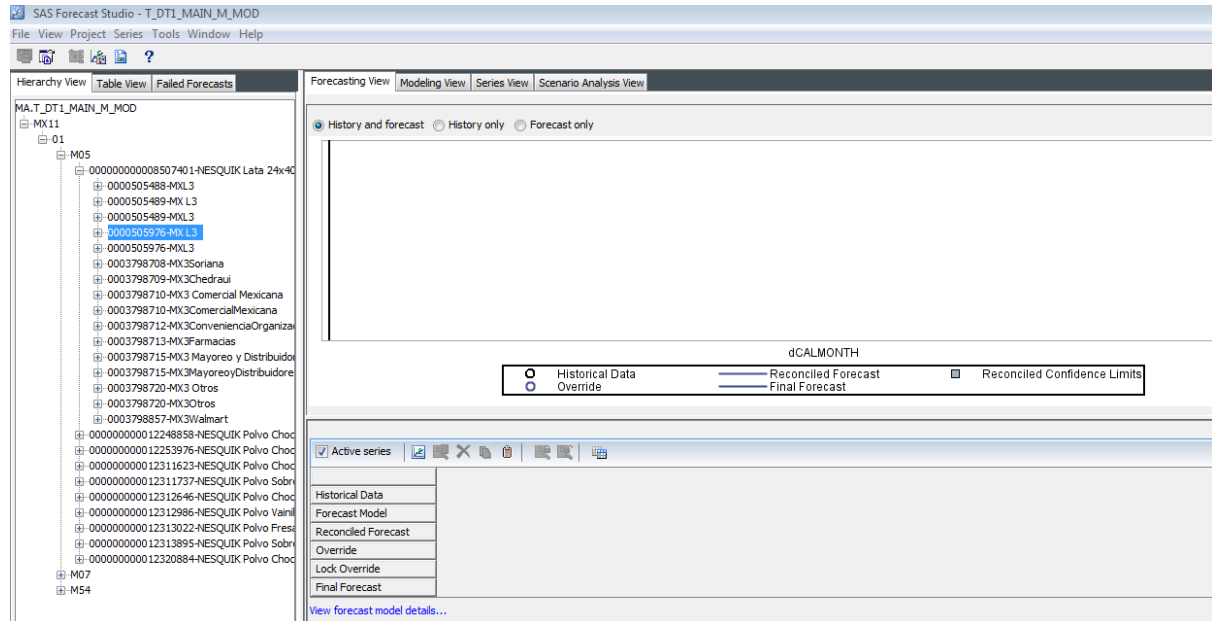


Issue in FStudio Project

We created a project in Forecast Studio that was working fine with all the models generated.

Suddenly all the values for this project were displayed empty:



All the information in the input data set is OK.

	EAN11	dCALMONTH	dCALYEAR	sAnimal	sDISTR_CHAN	sLevel	sMATL_GRP_1	sPROJECT	sSALESORG	sType	sUNIT	sWWNCA	sXX_MATERIAL_PROMO
1	7501059214385	201401	2014	Mules	01	P	M05	MOD	MX11	R	PUM	04	
2	7501059214385	201402	2014	Mules	01	P	M05	MOD	MX11	R	PUM	04	
3	7501059214385	201403	2014	Mules	01	P	M05	MOD	MX11	R	PUM	04	
4	7501059214385	201404	2014	Mules	01	P	M05	MOD	MX11	R	PUM	04	
5	7501059214385	201405	2014	Mules	01	P	M05	MOD	MX11	R	PUM	04	
6	7501059214385	201406	2014	Mules	01	P	M05	MOD	MX11	R	PUM	04	
7	7501059214385	201407	2014	Mules	01	P	M05	MOD	MX11	R	PUM	04	
8	7501059214385	201408	2014	Mules	01	P	M05	MOD	MX11	R	PUM	04	
9	7501059214385	201409	2014	Mules	01	P	M05	MOD	MX11	R	PUM	04	
10	7501059214385	201410	2014	Mules	01	P	M05	MOD	MX11	R	PUM	04	
11	7501059214385	201411	2014	Mules	01	P	M05	MOD	MX11	R	PUM	04	
12	7501059214385	201412	2014	Mules	01	P	M05	MOD	MX11	R	PUM	04	
13	7501059214385	201501	2015	Mules	01	P	M05	MOD	MX11	R	PUM	04	
14	7501059214385	201502	2015	Mules	01	P	M05	MOD	MX11	R	PUM	04	
15	7501059214385	201503	2015	Mules	01	P	M05	MOD	MX11	R	PUM	04	
16	7501059214385	201503	2015	Mules	01	P	M05	MOD	MX11	R	PUM	04	

We would like to know the reason that cause this issue in the FStudio Project and how to solve it.